

Quintile Analysis Engine Report

[QAE Guide / Contact](#)

By Simon Hobbs



System Fundamentals

www.system-fundamentals.comMinimal guide provided below
→ See 'QAE Guide' for more details[Terms & Conditions](#)[Privacy Policy](#)

The **QAE Product** transforms 2 sets of cardinal daily metrics into ordinal **Q-Bands**, ranking and counting them across **Fixed Timeframes** using **Reverse Chronology**. The dataset is a closed 365/366-day historical envelope anchored to **Newest Date**. QAE processes 2 metric sets through 2 independent lenses: **M1 Baseline (BL)** and **M2 Reaction (RL)**. QAE is strictly historical making yesterday the newest allowable date.

Metric 1 - M1 → Baseline Lens **○_BL =** Ranked by absolute state within the Complete One-Year Range

Metric 2 - M2 → Reaction Lens **△_RL =** Reshaped to Reaction Intensity from Prior State then Ranked abs 1yr range

All containers show identification badges for timeframes plus lens type with metric identity

Border colors indicate timeframes

1 Month

3 Months

6 Months

1 Year

Distant 6M

Reserved space: Automated system status and integration details

QAE - Quintile Analysis Engine
SEASONAL BACK-STITC PAGE
* Stock Market Skin *

REPORT TITLE: nVidia / NVDA / 2025 / NY / Metric 1 Volume / Metric 2 Close Price USD / EDT UTC -4hrs

Newest: Dec 31, 2025
Oldest: Jan 1, 2025
Newest Active Date: Dec 31, 2025

UTC-04:00 Atlantic Canada / Venezuela

QAE Timestamp: 2026-05-12 | 20:47:36

Day Count: 365
Active Days: 250
Participation: 68.49%

○_BL_M1 Baseline 1 Year

Newest Active Dec 31, 2025
Volume
120,100,492

Weak

Consecutive Days
(no direction) Weak = 5

Lowest Volume **Dec 24, 2025**
65,528,551

Highest Volume **Apr 9, 2025**
818,830,938

BL Quintile Band M1
Volume Cut-Offs

Weak | Up To - 154,059,241
Moderate | Up To - 181,907,565
Median | Up To - 217,864,109
Strong | Up To - 268,848,825
Peak | Up To - 818,830,938

△_RL_M2 Reaction 1 Year

Newest Active Dec 31, 2025
Close Price % Change
0.555% = 186.5

Weak ▼

Consecutive Days
Weak ▼ = 2
(no direction) Weak = 2

Lowest % Change **Jan 8, 2025**
0.021%

Highest % Change **Apr 9, 2025**
18.723%

RL Quintile Band M2
Close Price % Change Cut-Offs

Weak | Up To - 0.5721%
Moderate | Up To - 1.1108%
Median | Up To - 2.0539%
Strong | Up To - 3.3397%
Peak | Up To - 18.7227%

○_BL_M1 Baseline & **△_RL_M2 Reaction** Newest Historical Activity 1 Year

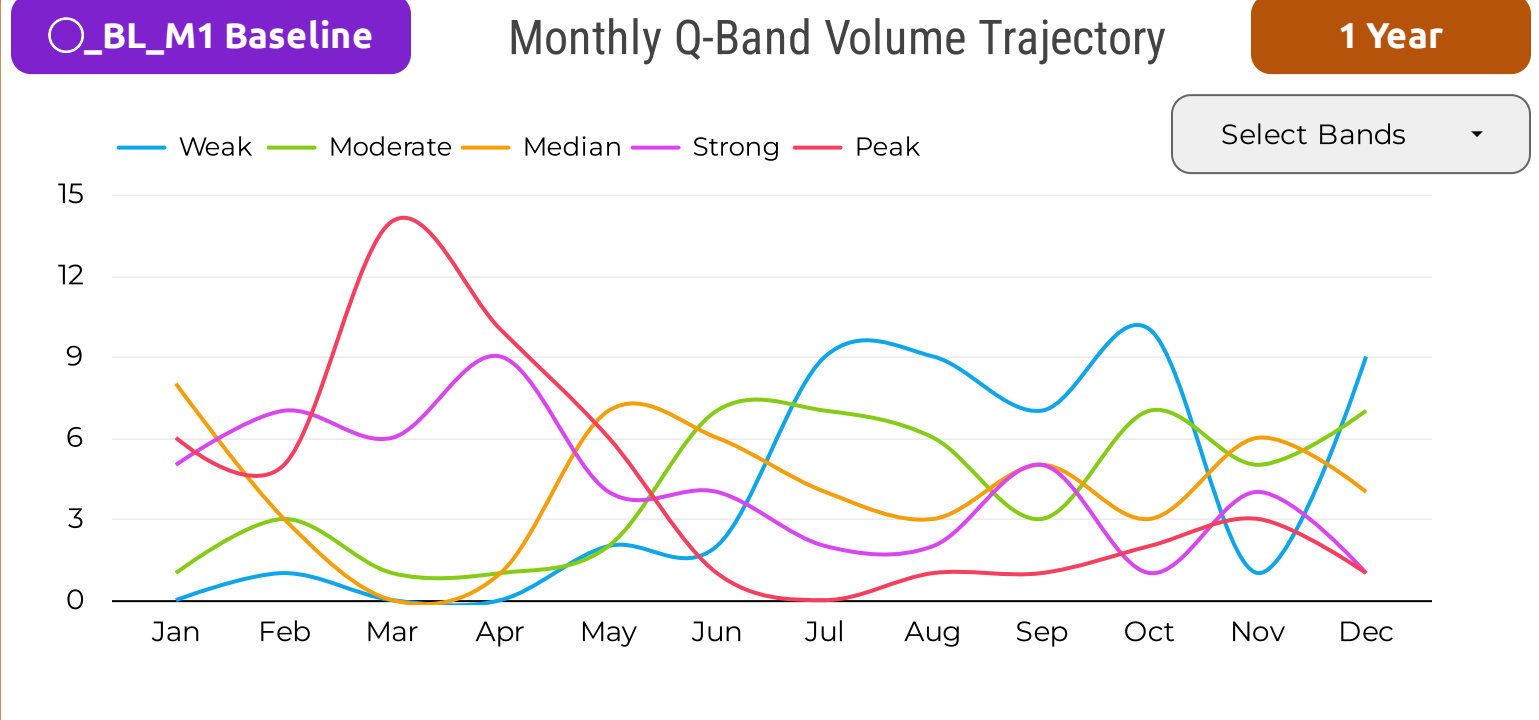
Local History: Q-Bands Volume & Close Price % Change

Date	○_BL_M1	Position	△_RL_M2
Dec 31, 2025	Weak	First Active Date	Weak ▼
Dec 30, 2025	Weak	2nd Active Date	Weak ▼
Dec 29, 2025	Weak	3rd	Median ▼
Dec 26, 2025	Weak	4th	Moderate ▲
Dec 24, 2025	Weak	5th	Weak ▼
Dec 23, 2025	Moderate	6th	Strong ▲
Dec 22, 2025	Weak	7th	Median ▲
Dec 19, 2025	Peak	8th	Peak ▲
Dec 18, 2025	Moderate	9th	Median ▲
Dec 17, 2025	Strong	10th	Peak ▼

Peak List	Date_○_BL...
1	Dec 19, 2025
2	Nov 25, 2025
3	Nov 21, 2025
4	Nov 20, 2025
5	Oct 29, 2025
6	Oct 28, 2025
7	Sep 22, 2025
8	Aug 28, 2025
9	Jun 25, 2025
10	May 30, 2025

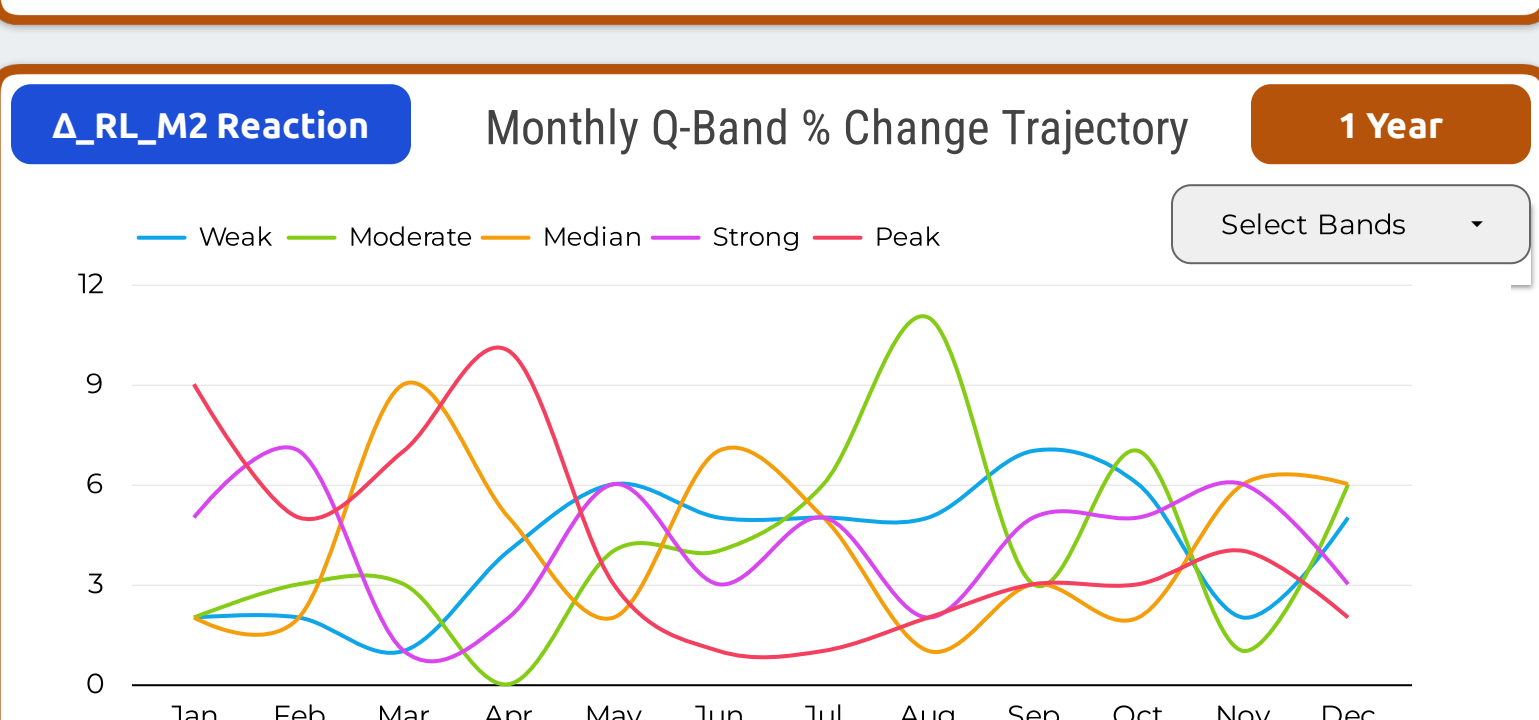
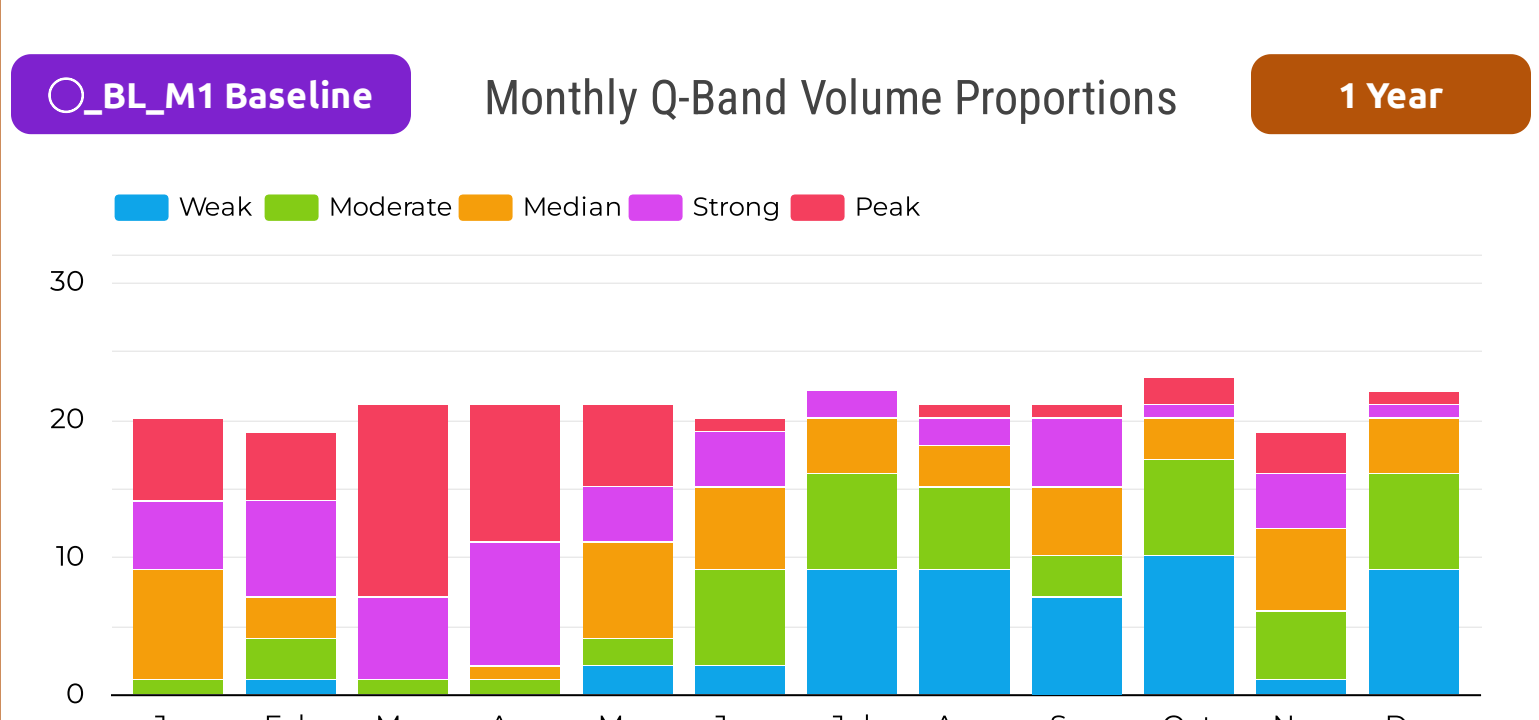
Peak List	Date_△_RL...
1	Dec 19, 2025
2	Dec 17, 2025
3	Nov 13, 2025
4	Nov 10, 2025
5	Nov 6, 2025
6	Nov 4, 2025
7	Oct 28, 2025
8	Oct 14, 2025
9	Oct 10, 2025
10	Sep 22, 2025

Monthly / Seasonal Analysis Section - Volume M1 & Close Price % Change M2



○_BL_M1 Baseline Monthly Q-Band Volume Dispersion 1 Year

	Jan	Feb	Mar	Apr	May	Jun	Jul	Aug	Sep	Oct	Nov	Dec
Weak	0	1	0	0	2	2	9	9	7	10	1	9
Moderate	1	3	1	1	2	7	7	6	3	7	5	7
Median	8	3	0	1	7	6	4	3	5	3	6	4
Strong	5	7	6	9	4	4	2	2	5	1	4	1
Peak	6	5	14	10	6	1	0	1	1	2	3	1



△_RL_M2 Reaction Monthly Q-Band % Change Dispersion 1 Year

	Jan	Feb	Mar	Apr	May	Jun	Jul	Aug	Sep	Oct	Nov	Dec
Weak	2	2	1	4	6	5	5	5	7	6	2	5
Moderate	2	3	3	0	4	4	6	11	3	7	1	6
Median	2	2	9	5	2	7	5	1	3	2	6	6
Strong	5	7	1	2	6	3	5	2	5	5	6	3
Peak	9	5	7	10	3	1	1	2	3	3	4	2

