

Quintile Analysis Engine Report

[QAE Guide / Contact](#)

By Simon Hobbs



System Fundamentals

www.system-fundamentals.com

Minimal guide provided below
→ See 'QAE Guide' for more details[Terms & Conditions](#)[Privacy Policy](#)

The **QAE Product** transforms 2 sets of cardinal daily metrics into ordinal **Q-Bands**, ranking and counting them across **Fixed Timeframes** using **Reverse Chronology**. The dataset is a closed 365/366-day historical envelope anchored to **Newest Date**. QAE processes 2 metric sets through 2 independent lenses: **M1 Baseline (BL)** and **M2 Reaction (RL)**. QAE is strictly historical making yesterday the newest allowable date.

Metric 1 - M1

→ Baseline Lens

○_BL =

Ranked by absolute state within the Complete One-Year Range

Metric 2 - M2

→ Reaction Lens

△_RL =

Reshaped to Reaction Intensity from Prior State then Ranked abs 1yr range

All containers show identification badges for timeframes plus lens type with metric identity

Border colors indicate timeframes

1 Month

3 Months

6 Months

1 Year

Distant 6M

Reserved space: Automated system status and integration details

QAE - Quintile Analysis Engine SEASONAL BACK-STITC PAGE

* Stock Market Skin *

REPORT TITLE: nVidia / NVDA / 2024 / NY / Metric 1 Volume / Metric 2 Close Price USD / EDT UTC -4hrs

Newest: Dec 31, 2024

Oldest: Jan 1, 2024

Newest Active Date: Dec 31, 2024

UTC-04:00 Atlantic Canada / Venezuela

QAE Timestamp: 2026-05-13 | 23:45:12

Day Count

366

Active Days

252

Participation

68.85%



○_BL_M1 Baseline

1 Year

Newest Active Dec 31, 2024
Volume

155,659,203

Weak

Consecutive Days

(no direction) Weak = 6

Lowest Volume

Dec 24, 2024

105,157,000

Highest Volume

Apr 1, 2024

1,142,268,969

BL Quintile Band M1
Volume Cut-Offs

Weak | Up To - 232,010,265

Moderate | Up To - 306,661,201

Median | Up To - 400,439,347

Strong | Up To - 495,539,589

Peak | Up To - 1,142,268,969

△_RL_M2 Reaction

1 Year

Newest Active Dec 31, 2024
Close Price % Change

2.327%

= 134.29

Median ▼

Consecutive Days

Median ▼ = 1
(no direction) Median = 1

Lowest % Change

Apr 1, 2024

0.000%

Highest % Change

Feb 22, 2024

16.407%

RL Quintile Band M2
Close Price % Change Cut-Offs

Weak | Up To - 0.7210%

Moderate | Up To - 1.5923%

Median | Up To - 2.4699%

Strong | Up To - 3.8497%

Peak | Up To - 16.4073%

○_BL_M1 Baseline

&

△_RL_M2 Reaction

Newest Historical Activity

1 Year

Local History: Q-Bands Volume & Close Price % Change

Peak - Volume M1

Peak - Price % Change M2

Date	○_BL_M1	Position	△_RL_M2
Dec 31, 2024	Weak	First Active Date	Median ▼
Dec 30, 2024	Weak	2nd Active Date	Weak ▲
Dec 27, 2024	Weak	3rd	Median ▼
Dec 26, 2024	Weak	4th	Weak ▼
Dec 24, 2024	Weak	5th	Weak ▲
Dec 23, 2024	Weak	6th	Strong ▲
Dec 20, 2024	Moderate	7th	Strong ▲
Dec 19, 2024	Weak	8th	Moderate ▲
Dec 18, 2024	Moderate	9th	Moderate ▼
Dec 17, 2024	Moderate	10th	Moderate ▼

Peak List	Date_○_BL...
1	Aug 5, 2024
2	Aug 1, 2024
3	Jun 21, 2024
4	Jun 20, 2024
5	Jun 6, 2024
6	Jun 5, 2024
7	May 31, 2024
8	May 29, 2024
9	May 28, 2024
10	May 23, 2024

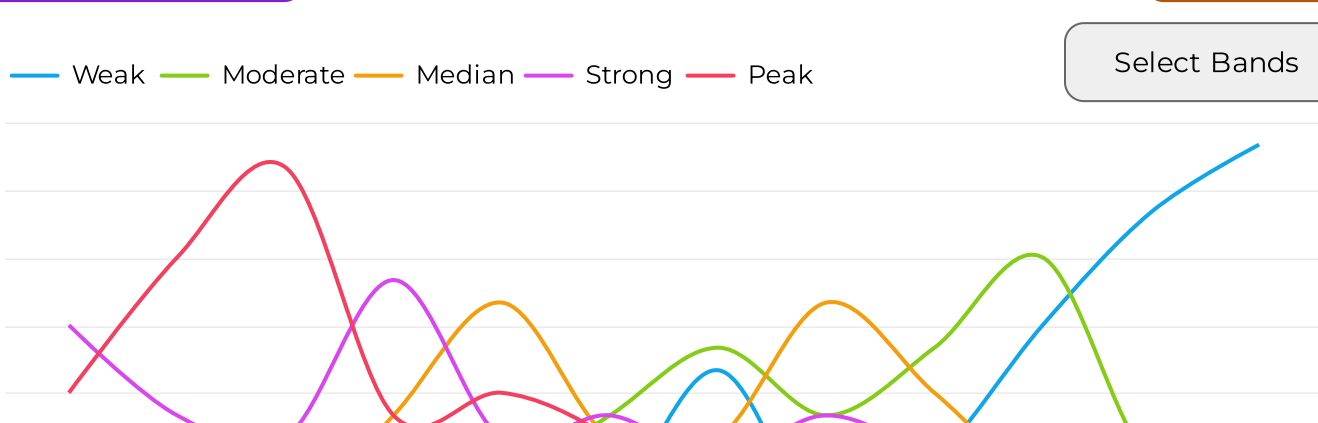
Peak List	Date_△_RL...
1	Nov 25, 2024
2	Nov 19, 2024
3	Nov 6, 2024
4	Oct 31, 2024
5	Oct 21, 2024
6	Oct 15, 2024
7	Oct 8, 2024
8	Sep 24, 2024
9	Sep 19, 2024
10	Sep 11, 2024

Monthly / Seasonal Analysis Section - Volume M1 & Close Price % Change M2

○_BL_M1 Baseline

Monthly Q-Band Volume Trajectory

1 Year



○_BL_M1 Baseline

Monthly Q-Band Volume Dispersion

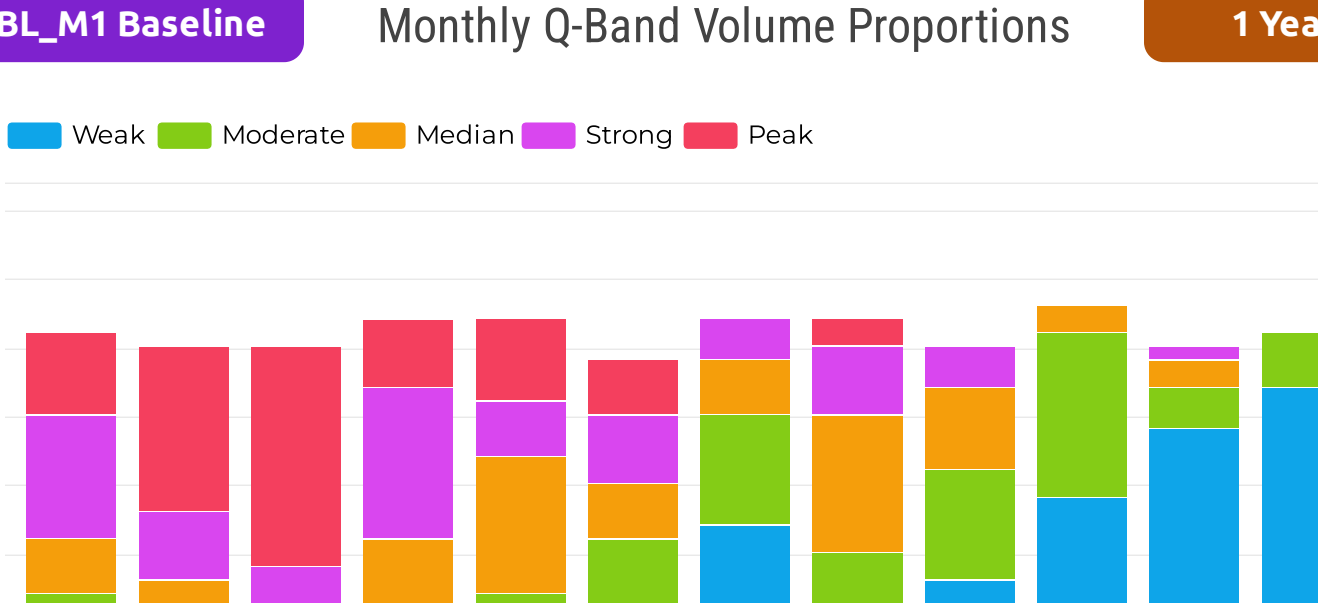
1 Year

	Jan	Feb	Mar	Apr	May	Jun	Jul	Aug	Sep	Oct	Nov	Dec
Weak	0	0	0	0	0	1	7	0	3	9	14	17
Moderate	2	0	0	1	2	5	8	5	8	12	3	4
Median	4	3	0	5	10	4	4	10	6	2	2	0
Strong	9	5	4	11	4	5	3	5	3	0	1	0
Peak	6	12	16	5	6	4	0	2	0	0	0	0

○_BL_M1 Baseline

Monthly Q-Band Volume Proportions

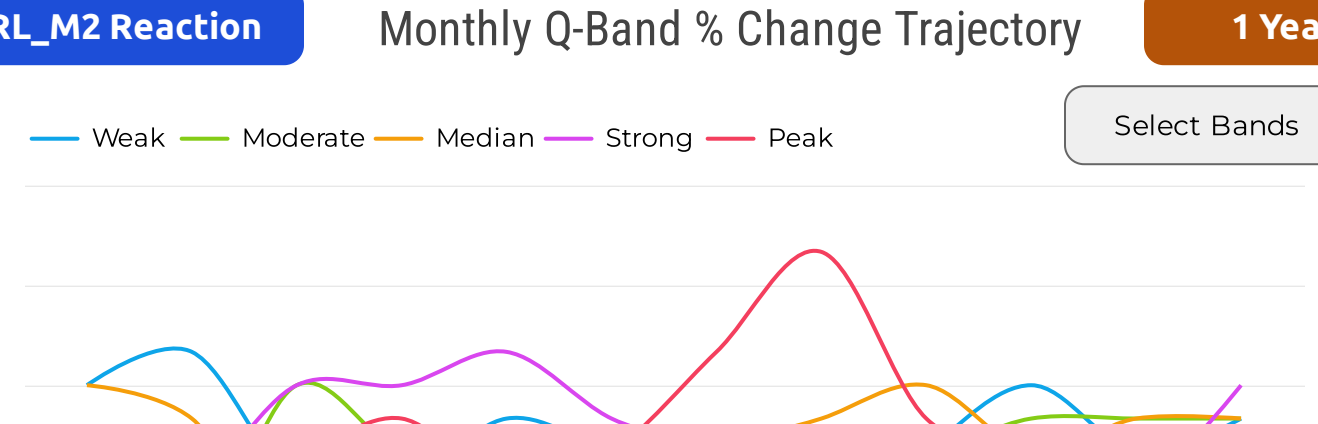
1 Year



△_RL_M2 Reaction

Monthly Q-Band % Change Trajectory

1 Year



△_RL_M2 Reaction

Monthly Q-Band % Change Dispersion

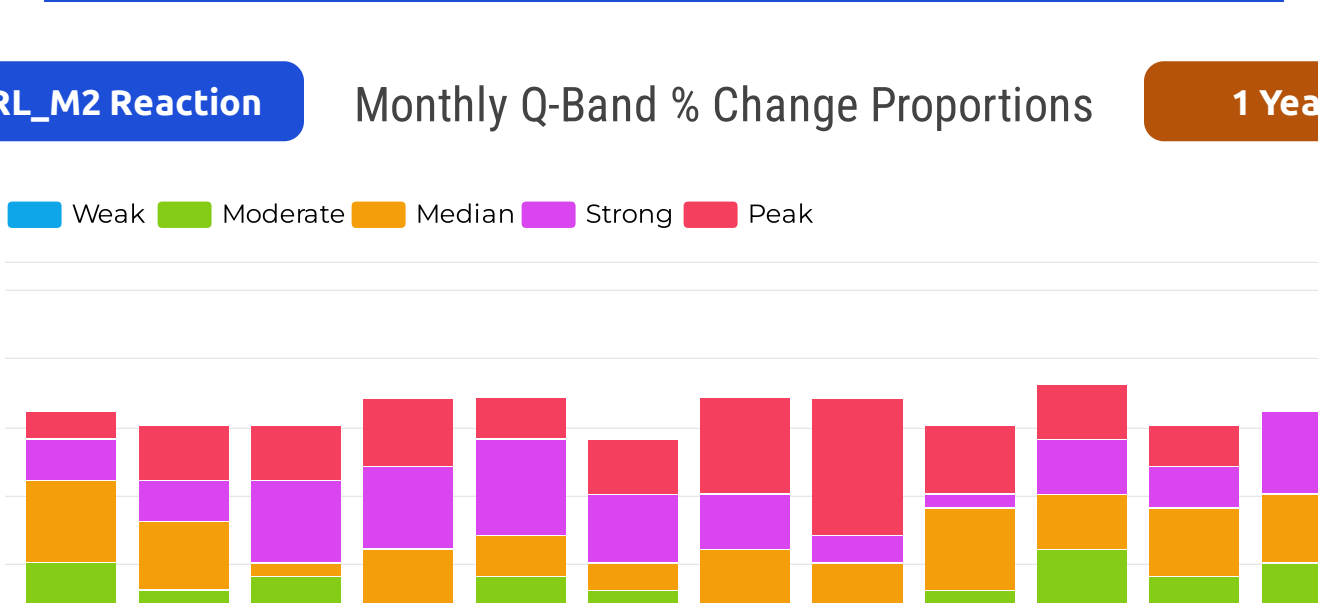
1 Year

	Jan	Feb	Mar	Apr	May	Jun	Jul	Aug	Sep	Oct	Nov	Dec
Weak	6	7	3	3	5	4	3	1	4	6	4	5
Moderate	4	1	6	4	4	4	4	4	4	5	5	5
Median	6	5	1	4	3	2	4	5	6	4	5	5
Strong	3	3	6	6	7	5	4	2	1	4	3	6
Peak	2	4	4	5	3	4	7	10	5	4	3	0

△_RL_M2 Reaction

Monthly Q-Band % Change Proportions

1 Year



△_RL_M2 Direction ▲ ▼

Monthly Directional Polarity

1 Year

