

# Quintile Analysis Engine Report

[QAE Guide / Contact](#)

By Simon Hobbs



System Fundamentals

[www.system-fundamentals.com](http://www.system-fundamentals.com)Minimal guide provided below  
→ See 'QAE Guide' for more details[Terms & Conditions](#)[Privacy Policy](#)

The **QAE Product** transforms 2 sets of cardinal daily metrics into ordinal **Q-Bands**, ranking and counting them across **Fixed Timeframes** using **Reverse Chronology**. The dataset is a closed 365/366-day historical envelope anchored to **Newest Date**. QAE processes 2 metric sets through 2 independent lenses: **M1 Baseline (BL)** and **M2 Reaction (RL)**. QAE is strictly historical making yesterday the newest allowable date.

**Metric 1 - M1**

→ Baseline Lens

○\_BL =

Ranked by absolute state within the Complete One-Year Range

**Metric 2 - M2**

→ Reaction Lens

△\_RL =

Reshaped to Reaction Intensity from Prior State then Ranked abs 1yr range

Border colors indicate timeframes

1 Month

3 Months

6 Months

1 Year

Distant 6M

All containers show identification badges for timeframes plus lens type with metric identity

Reserved space: Automated system status and integration details

## QAE - Quintile Analysis Engine SEASONAL BACK-STITC PAGE

\* Stock Market Skin \*

REPORT TITLE: nVidia / NVDA / 2023 / NY / Metric 1 Volume / Metric 2 Close Price USD / EDT UTC -4hrs

Newest: Dec 31, 2023

Oldest: Jan 1, 2023

Newest Active Date: Dec 29, 2023

UTC-04:00 Atlantic Canada / Venezuela

QAE Timestamp: 2026-05-15 | 21:06:46

Day Count  
365Active Days  
250Participation  
68.49%

○\_BL\_M1 Baseline

1 Year

Newest Active Dec 29, 2023  
Volume

389,293,276

Moderate

Consecutive Days  
(no direction) Moderate = 1

Lowest Volume

Jul 3, 2023

197,754,098

Highest Volume

May 25, 2023

1,543,911,075

BL Quintile Band M1  
Volume Cut-Offs

Weak | Up To - 368,287,192

Moderate | Up To - 409,878,654

Median | Up To - 467,000,411

Strong | Up To - 548,073,595

Peak | Up To - 1,543,911,075

△\_RL\_M2 Reaction

1 Year

Newest Active Dec 29, 2023  
Close Price % Change

0.000% = 49.52

Weak ▼

Consecutive Days  
Weak ▼ = 1  
(no direction) Weak = 3

Lowest % Change

Mar 13, 2023

0.000%

Highest % Change

May 25, 2023

24.361%

RL Quintile Band M2  
Close Price % Change Cut-Offs

Weak | Up To - 0.6740%

Moderate | Up To - 1.3266%

Median | Up To - 2.1548%

Strong | Up To - 3.0960%

Peak | Up To - 24.3615%

○\_BL\_M1 Baseline

△\_RL\_M2 Reaction

Newest Historical Activity

1 Year

Local History: Q-Bands Volume &amp; Close Price % Change

Peak - Volume M1

Peak - Price % Change M2

Date	○_BL_M1	Position	△_RL_M2
Dec 29, 2023	Moderate	First Active Date	Weak ▼
Dec 28, 2023	Weak	2nd Active Date	Weak ▲
Dec 27, 2023	Weak	3rd	Weak ▲
Dec 26, 2023	Weak	4th	Moderate ▲
Dec 22, 2023	Weak	5th	Weak ▼
Dec 21, 2023	Weak	6th	Median ▲
Dec 20, 2023	Moderate	7th	Strong ▼
Dec 19, 2023	Median	8th	Moderate ▼
Dec 18, 2023	Median	9th	Strong ▲
Dec 15, 2023	Strong	10th	Moderate ▲

Peak List	Date_○_BL...
1	Nov 22, 2023
2	Nov 21, 2023
3	Oct 18, 2023
4	Oct 17, 2023
5	Aug 30, 2023
6	Aug 29, 2023
7	Aug 28, 2023
8	Aug 25, 2023
9	Aug 24, 2023
10	Aug 23, 2023

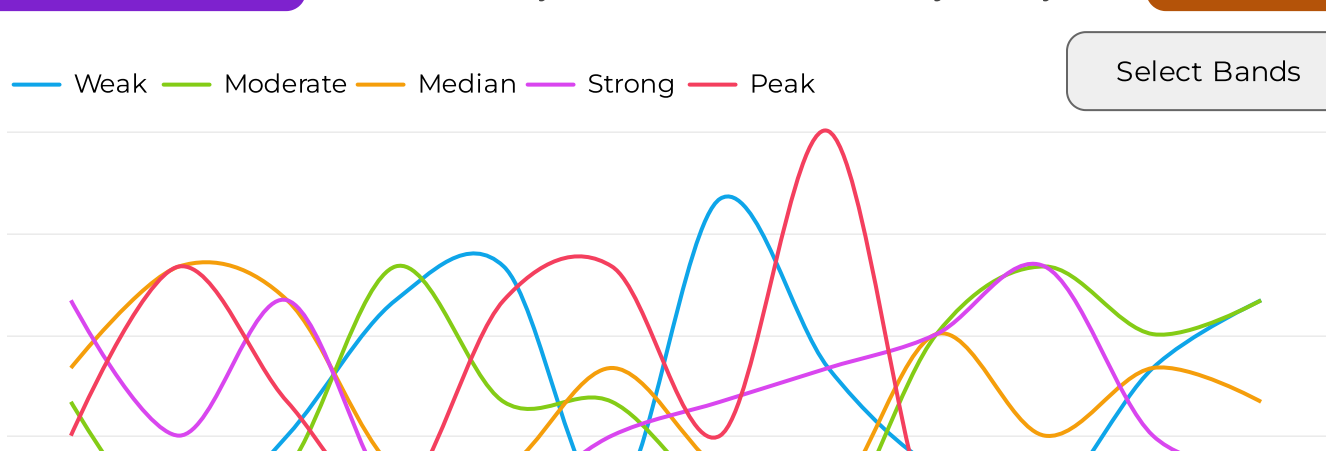
Peak List	Date_△_RL...
1	Nov 3, 2023
2	Nov 1, 2023
3	Oct 26, 2023
4	Oct 25, 2023
5	Oct 23, 2023
6	Oct 18, 2023
7	Oct 17, 2023
8	Oct 13, 2023
9	Sep 15, 2023
10	Aug 29, 2023

## Monthly / Seasonal Analysis Section - Volume M1 & Close Price % Change M2

○\_BL\_M1 Baseline

Monthly Q-Band Volume Trajectory

1 Year



○\_BL\_M1 Baseline

Monthly Q-Band Volume Dispersion

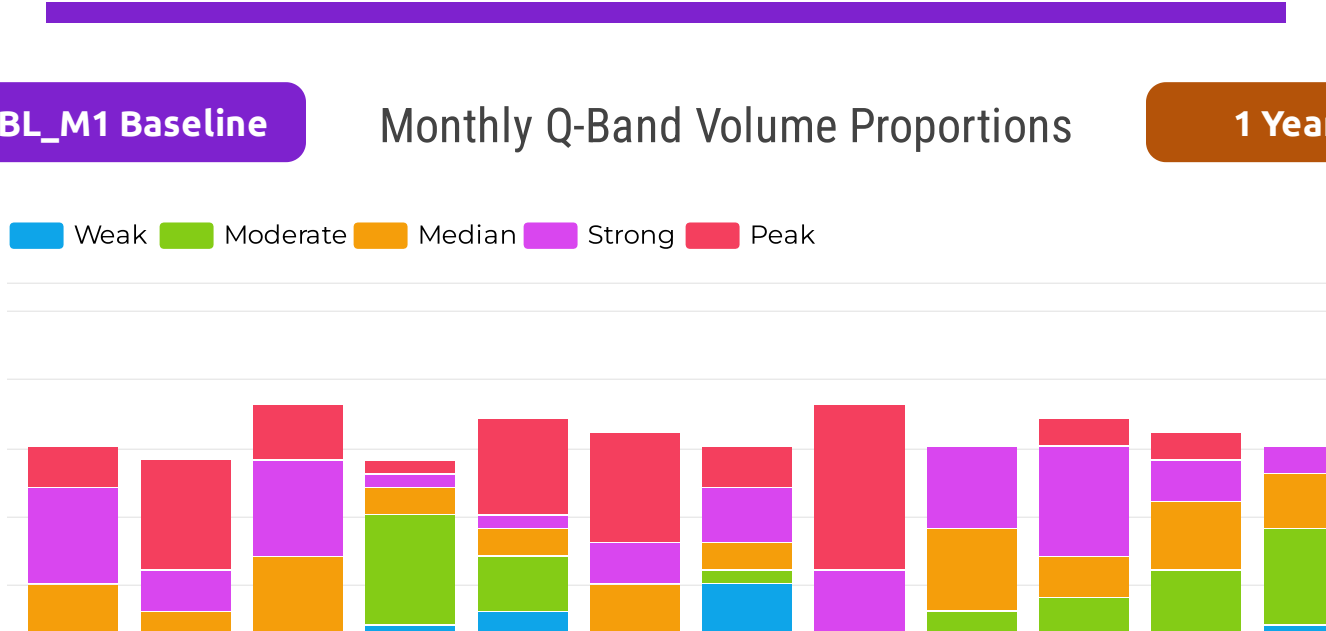
1 Year

	Jan	Feb	Mar	Apr	May	Jun	Jul	Aug	Sep	Oct	Nov	Dec
Weak	1	0	3	7	8	1	10	5	2	1	5	7
Moderate	4	0	2	8	4	4	1	0	6	8	6	7
Median	5	8	7	2	2	5	2	1	6	3	5	4
Strong	7	3	7	1	1	3	4	5	6	8	3	2
Peak	3	8	4	1	7	8	3	12	0	2	2	0

○\_BL\_M1 Baseline

Monthly Q-Band Volume Proportions

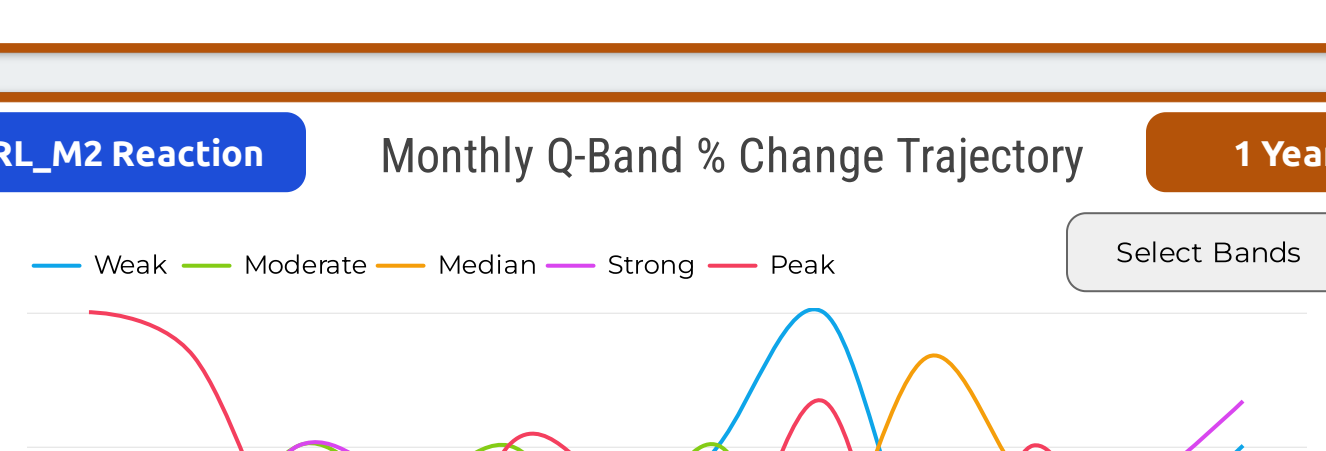
1 Year



△\_RL\_M2 Reaction

Monthly Q-Band % Change Trajectory

1 Year



△\_RL\_M2 Reaction

Monthly Q-Band % Change Dispersion

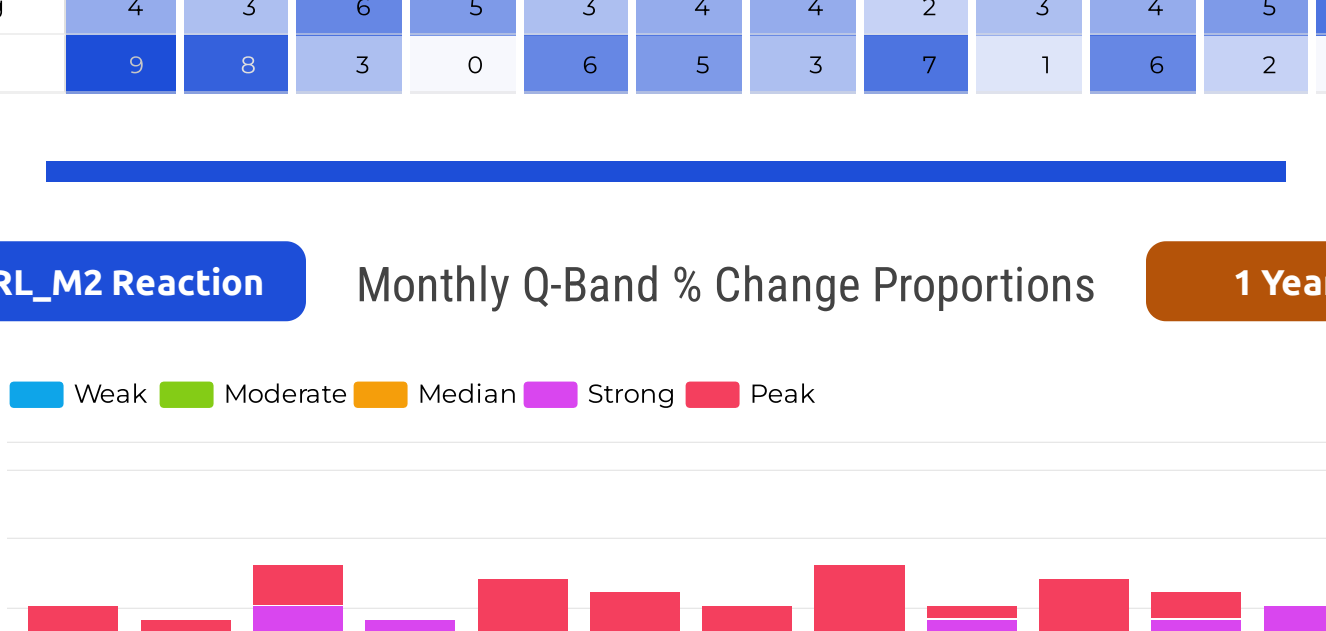
1 Year

	Jan	Feb	Mar	Apr	May	Jun	Jul	Aug	Sep	Oct	Nov	Dec
Weak	3	4	3	4	2	3	6	9	3	3	4	6
Moderate	0	3	6	5	6	4	6	2	5	4	5	4
Median	4	1	5	5	5	5	1	3	8	5	5	3
Strong	4	3	6	5	3	4	4	2	3	4	5	7
Peak	9	8	3	0	6	5	3	7	1	6	2	0

△\_RL\_M2 Reaction

Monthly Q-Band % Change Proportions

1 Year



△\_RL\_M2 Direction ▲ ▼

Monthly Directional Polarity

1 Year

