

Quintile Analysis Engine Report

[QAE Guide / Contact](#)

By Simon Hobbs



System Fundamentals

www.system-fundamentals.comMinimal guide provided below
→ See 'QAE Guide' for more details[Terms & Conditions](#)[Privacy Policy](#)

The **QAE Product** transforms 2 sets of cardinal daily metrics into ordinal **Q-Bands**, ranking and counting them across **Fixed Timeframes** using **Reverse Chronology**. The dataset is a closed 365/366-day historical envelope anchored to **Newest Date**. QAE processes 2 metric sets through 2 independent lenses: **M1 Baseline (BL)** and **M2 Reaction (RL)**. QAE is strictly historical making yesterday the newest allowable date.

Metric 1 - M1 → Baseline Lens **○_BL =** Ranked by absolute state within the Complete One-Year Range

Metric 2 - M2 → Reaction Lens **△_RL =** Reshaped to Reaction Intensity from Prior State then Ranked abs 1yr range

All containers show identification badges for timeframes plus lens type with metric identity

Border colors indicate timeframes

1 Month **3 Months** **6 Months**

1 Year **Distant 6M**

Reserved space: Automated system status and integration details

QAE - Quintile Analysis Engine
SEASONAL BACK-STITC PAGE
* Stock Market Skin *

REPORT TITLE: nVidia / NVDA / 2022 / NY / Metric 1 Volume / Metric 2 Close Price USD / EDT UTC -4hrs

NVIDIA

Newest: Dec 31, 2022
Oldest: Jan 1, 2022
Newest Active Date: Dec 30, 2022

UTC-04:00 Atlantic Canada / Venezuela

QAE Timestamp: 2026-05-15 | 21:00:43

Day Count: 365
Active Days: 252
Participation: 69.04%

○_BL_M1 Baseline **1 Year**

Newest Active Dec 30, 2022
Volume
310,489,797

Weak

Consecutive Days (no direction) Weak = 3

Lowest Volume **Highest Volume**
Nov 25, 2022 **Nov 10, 2022**
167,934,298 **1,178,864,828**

BL Quintile Band M1
Volume Cut-Offs

Weak | Up To - 435,180,696
Moderate | Up To - 496,131,905
Median | Up To - 557,049,294
Strong | Up To - 653,142,453
Peak | Up To - 1,178,864,828

△_RL_M2 Reaction **1 Year**

Newest Active Dec 30, 2022
Close Price % Change
0.068% = 14.61

Weak ▲

Consecutive Days Weak ▲ = 1 (no direction) Weak = 1

Lowest % Change **Highest % Change**
Jan 24, 2022 **Nov 10, 2022**
0.000% **14.296%**

RL Quintile Band M2
Close Price % Change Cut-Offs

Weak | Up To - 1.1020%
Moderate | Up To - 2.0423%
Median | Up To - 3.2558%
Strong | Up To - 5.2756%
Peak | Up To - 14.2961%

○_BL_M1 Baseline & **△_RL_M2 Reaction** **Newest Historical Activity** **1 Year**

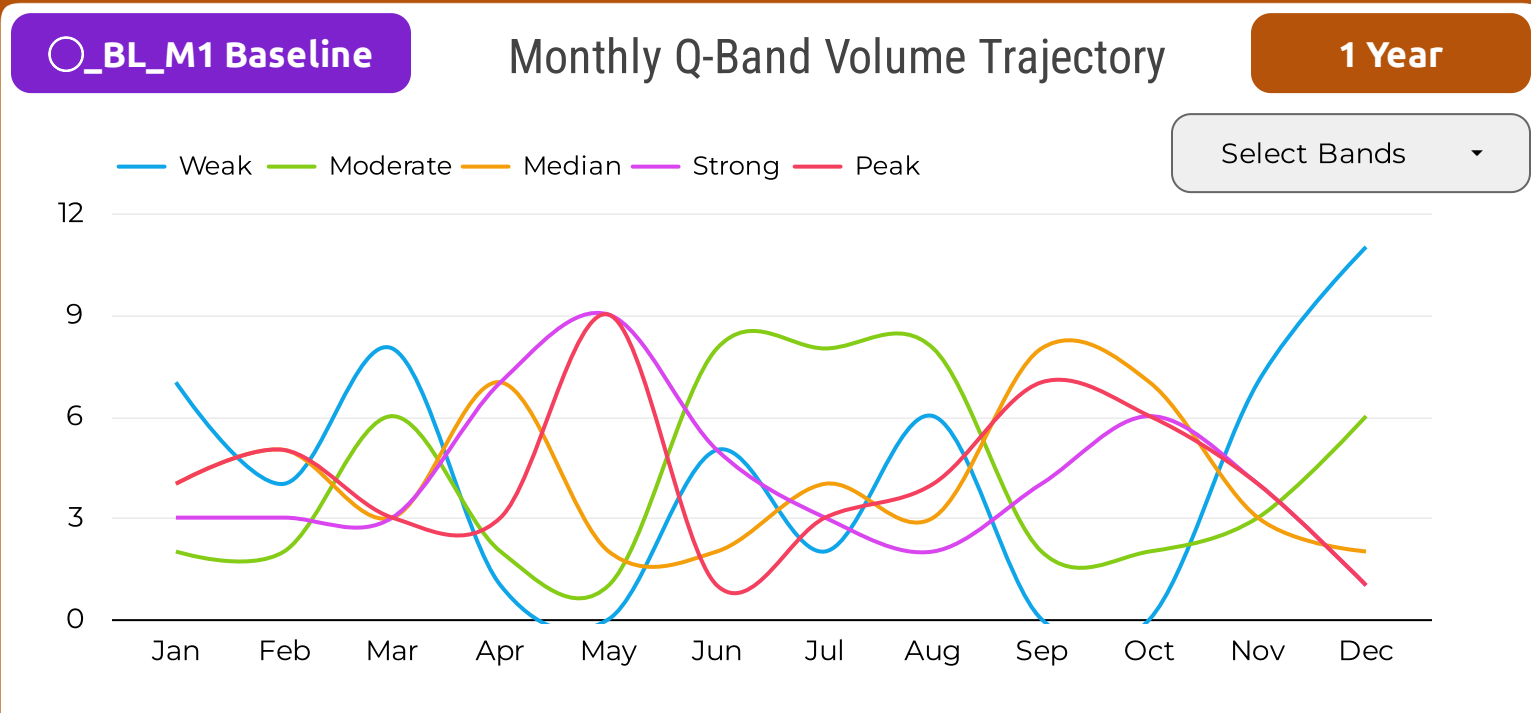
Local History: Q-Bands Volume & Close Price % Change

Date	○_BL_M1	Position	△_RL_M2
Dec 30, 2022	Weak	First Active Date	Weak ▲
Dec 29, 2022	Weak	2nd Active Date	Strong ▲
Dec 28, 2022	Weak	3rd	Weak ▼
Dec 27, 2022	Moderate	4th	Peak ▼
Dec 23, 2022	Weak	5th	Weak ▼
Dec 22, 2022	Strong	6th	Peak ▼
Dec 21, 2022	Weak	7th	Median ▲
Dec 20, 2022	Weak	8th	Weak ▼
Dec 19, 2022	Weak	9th	Moderate ▼
Dec 16, 2022	Moderate	10th	Median ▼

Peak List	Date_○_BL...
1	Dec 13, 2022
2	Nov 17, 2022
3	Nov 11, 2022
4	Nov 10, 2022
5	Nov 2, 2022
6	Oct 18, 2022
7	Oct 14, 2022
8	Oct 13, 2022
9	Oct 11, 2022
10	Oct 10, 2022

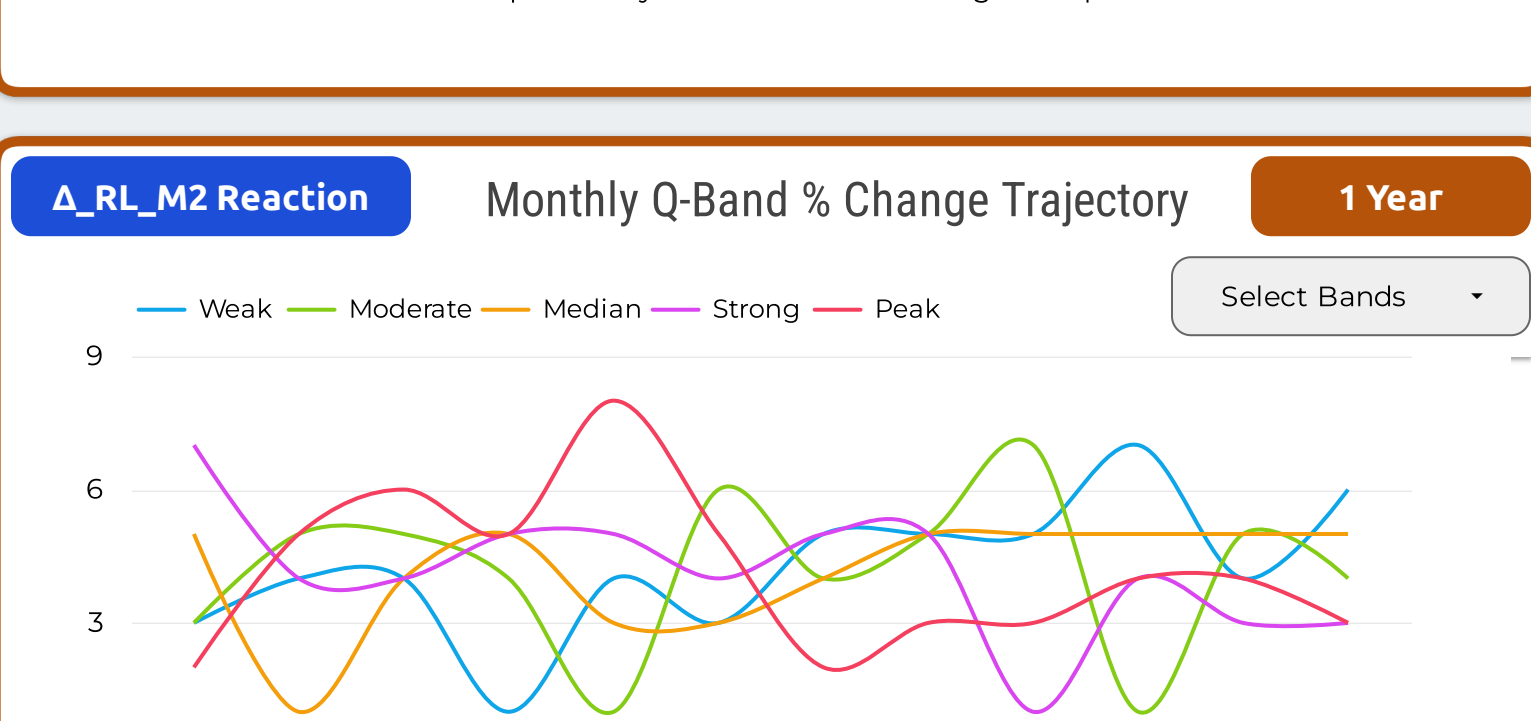
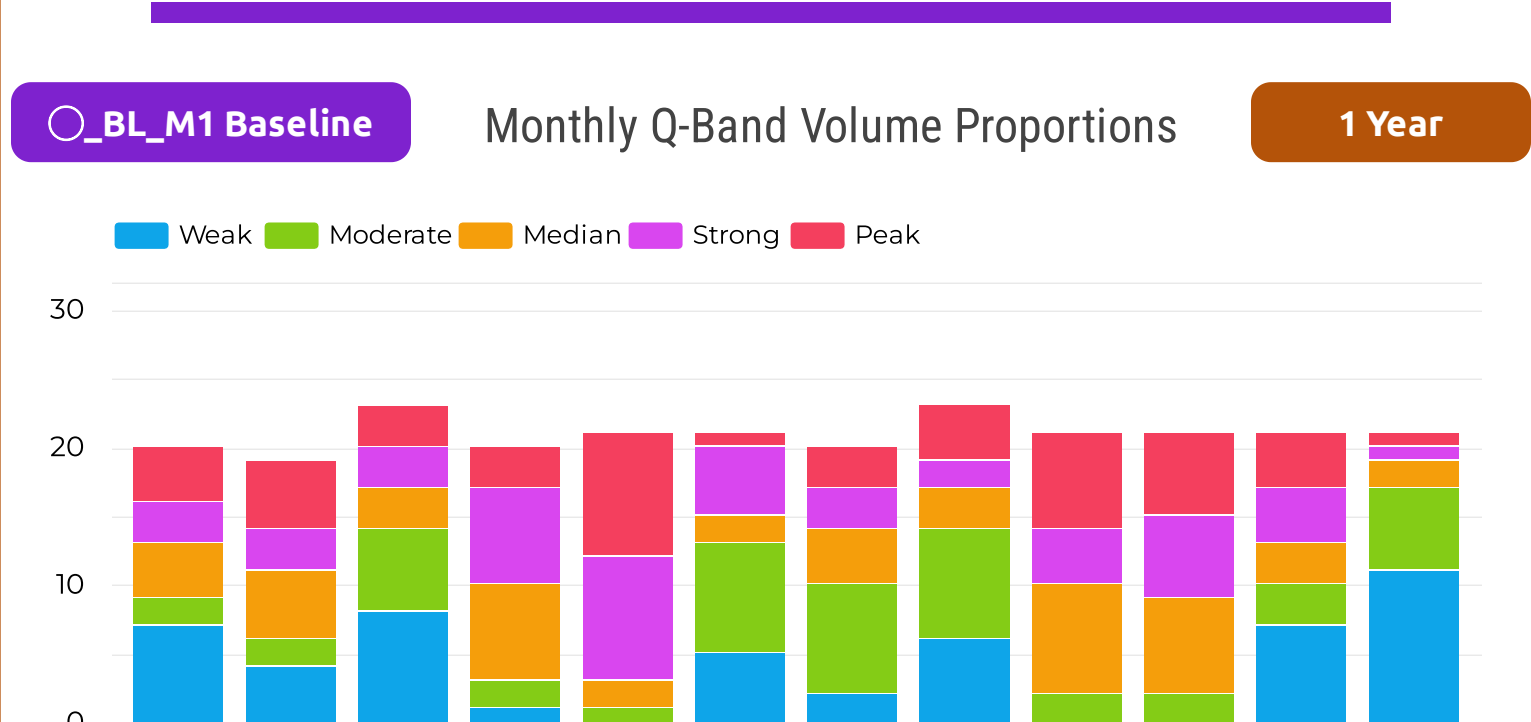
Peak List	Date_△_RL...
1	Dec 27, 2022
2	Dec 22, 2022
3	Dec 8, 2022
4	Nov 30, 2022
5	Nov 10, 2022
6	Nov 9, 2022
7	Nov 4, 2022
8	Oct 17, 2022
9	Oct 14, 2022
10	Oct 7, 2022

Monthly / Seasonal Analysis Section - Volume M1 & Close Price % Change M2



○_BL_M1 Baseline **Monthly Q-Band Volume Dispersion** **1 Year**

	Jan	Feb	Mar	Apr	May	Jun	Jul	Aug	Sep	Oct	Nov	Dec
Weak	7	4	8	1	0	5	2	6	0	0	7	11
Moderate	2	2	6	2	1	8	8	8	2	2	3	6
Median	4	5	3	7	2	2	4	3	8	7	3	2
Strong	3	3	3	7	9	5	3	2	4	6	4	1
Peak	4	5	3	3	9	1	3	4	7	6	4	1



△_RL_M2 Reaction **Monthly Q-Band % Change Dispersion** **1 Year**

	Jan	Feb	Mar	Apr	May	Jun	Jul	Aug	Sep	Oct	Nov	Dec
Weak	3	4	4	1	4	3	5	5	5	7	4	6
Moderate	3	5	5	4	1	6	4	5	7	1	5	4
Median	5	1	4	5	3	3	4	5	5	5	5	5
Strong	7	4	4	5	5	4	5	5	1	4	3	3
Peak	2	5	6	5	8	5	2	3	3	4	4	3

