

# Quintile Analysis Engine Report

[QAE Guide / Contact](#)

By Simon Hobbs



System Fundamentals

[www.system-fundamentals.com](http://www.system-fundamentals.com)Minimal guide provided below  
→ See 'QAE Guide' for more details[Terms & Conditions](#)[Privacy Policy](#)

The **QAE Product** transforms 2 sets of cardinal daily metrics into ordinal **Q-Bands**, ranking and counting them across **Fixed Timeframes** using **Reverse Chronology**. The dataset is a closed 365/366-day historical envelope anchored to **Newest Date**. QAE processes 2 metric sets through 2 independent lenses: **M1 Baseline (BL)** and **M2 Reaction (RL)**. QAE is strictly historical making yesterday the newest allowable date.

**Metric 1 - M1** → Baseline Lens **○\_BL =** Ranked by absolute state within the Complete One-Year Range  
**Metric 2 - M2** → Reaction Lens **△\_RL =** Reshaped to Reaction Intensity from Prior State then Ranked abs 1yr range

**Border colors indicate timeframes**

1 Month

3 Months

6 Months

1 Year

Distant 6M

Reserved space: Automated system status and integration details

**QAE - Quintile Analysis Engine**  
SEASONAL BACK-STITC PAGE  
\* Stock Market Skin \*

REPORT TITLE: nVidia / NVDA / 2021 / NY / Metric 1 Volume / Metric 2 Close Price USD / EDT UTC -4hrs

Newest: Dec 31, 2021  
Oldest: Jan 1, 2021  
Newest Active Date: Dec 31, 2021

UTC-04:00 Atlantic Canada / Venezuela

QAE Timestamp: 2026-05-15 | 20:48:24

Day Count: 365 | Active Days: 252 | Participation: 69.04%

**○\_BL\_M1 Baseline** 1 Year

**Newest Active Dec 31, 2021**  
Volume  
**266,529,897**

Moderate

Consecutive Days (no direction) Moderate = 1

Lowest Volume **Oct 20, 2021**  
146,275,909

Highest Volume **Nov 4, 2021**  
1,153,630,928

**BL Quintile Band M1**  
Volume Cut-Offs

- Weak | Up To - 218,802,526
- Moderate | Up To - 276,531,717
- Median | Up To - 341,148,845
- Strong | Up To - 494,114,139
- Peak | Up To - 1,153,630,928

**△\_RL\_M2 Reaction** 1 Year

**Newest Active Dec 31, 2021**  
Close Price % Change  
**0.608%** = 29.41

Weak ▼

Consecutive Days Weak ▼ = 1 (no direction) Weak = 1

Lowest % Change **Nov 12, 2021**  
0.000%

Highest % Change **Nov 4, 2021**  
12.030%

**RL Quintile Band M2**  
Close Price % Change Cut-Offs

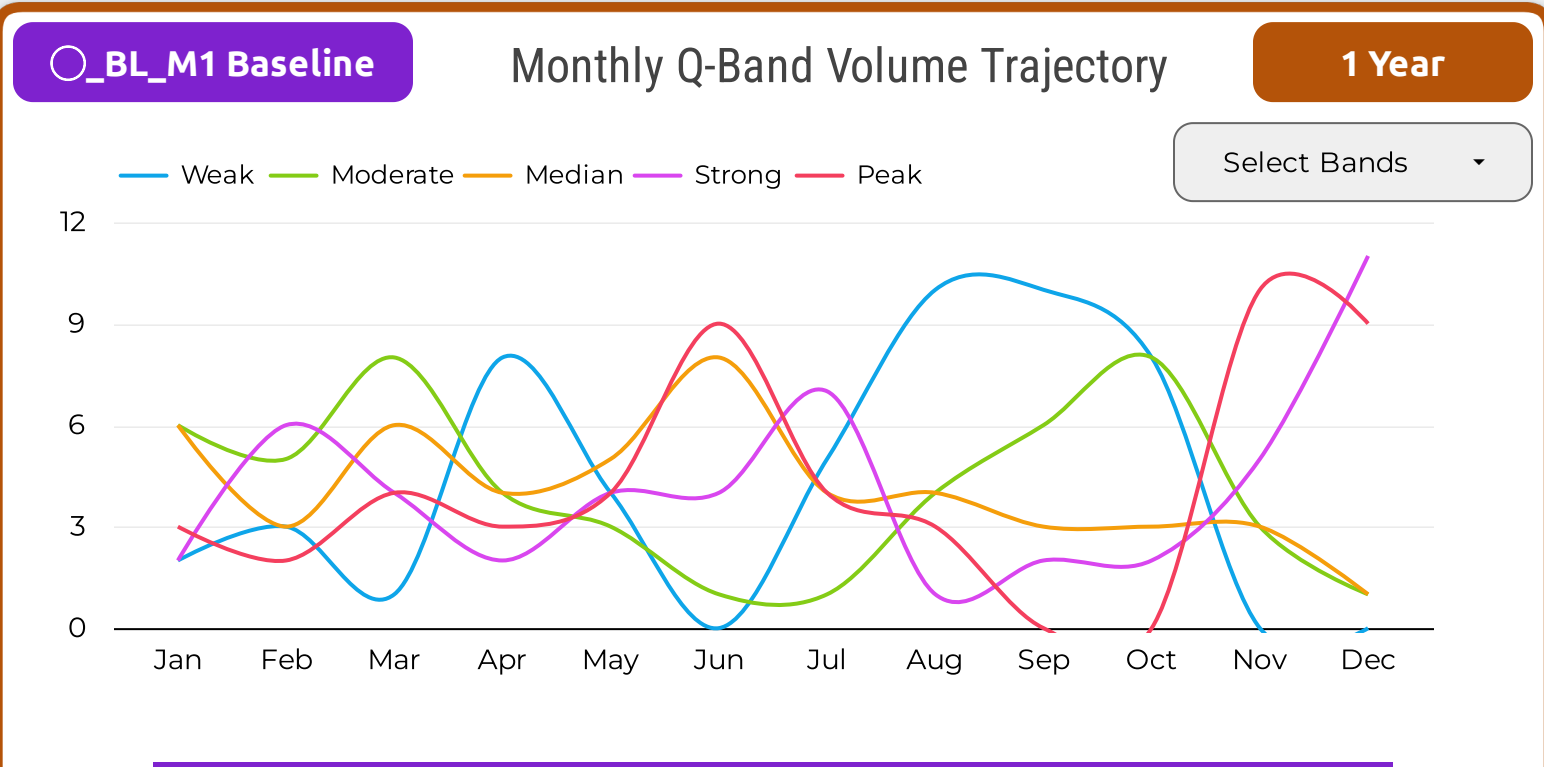
- Weak | Up To - 0.6406%
- Moderate | Up To - 1.1660%
- Median | Up To - 2.0611%
- Strong | Up To - 3.5709%
- Peak | Up To - 12.0301%

**○\_BL\_M1 Baseline** & **△\_RL\_M2 Reaction** Newest Historical Activity 1 Year

Local History: Q-Bands Volume & Close Price % Change | Peak - Volume M1 | Peak - Price % Change M2

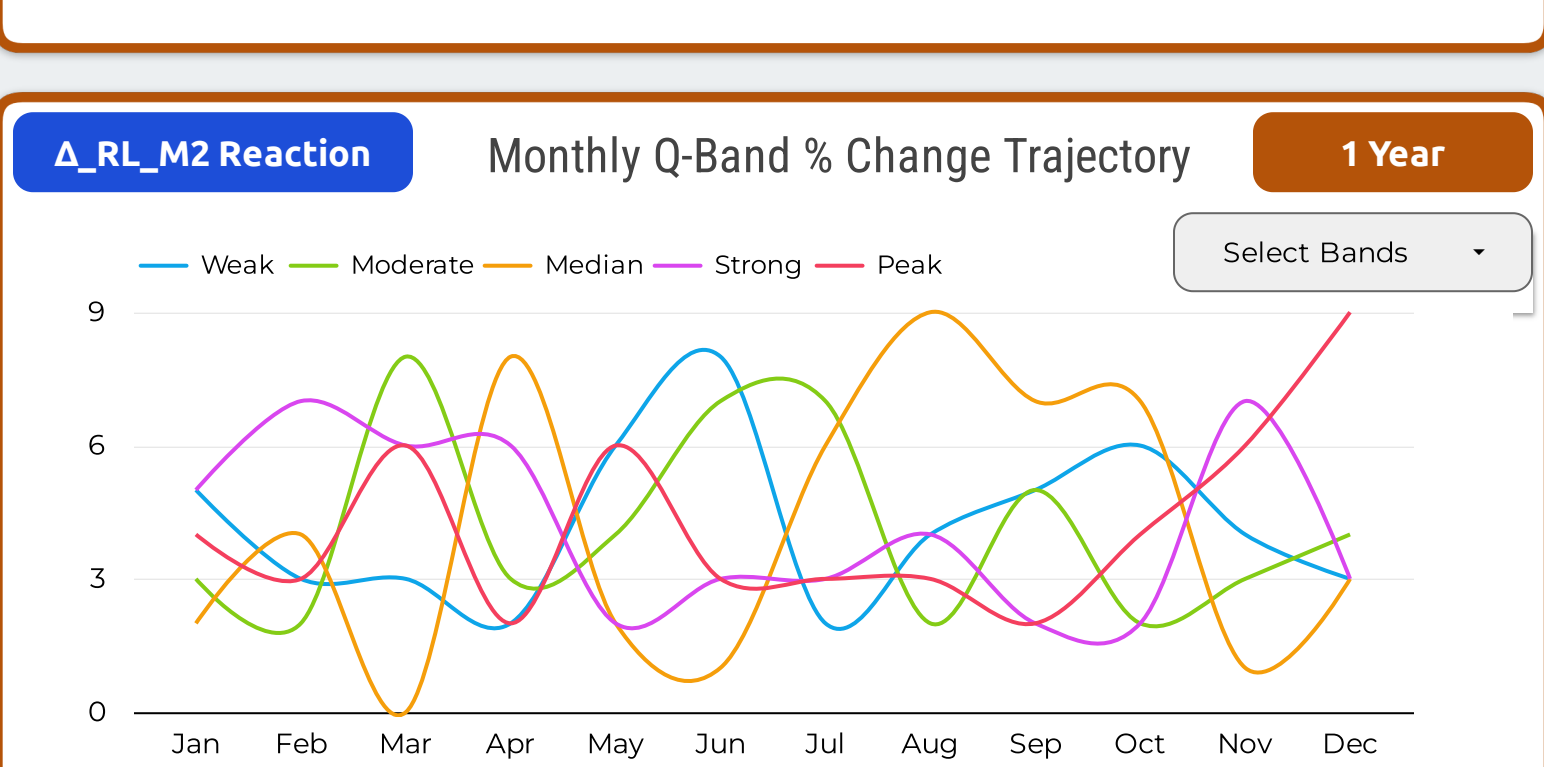
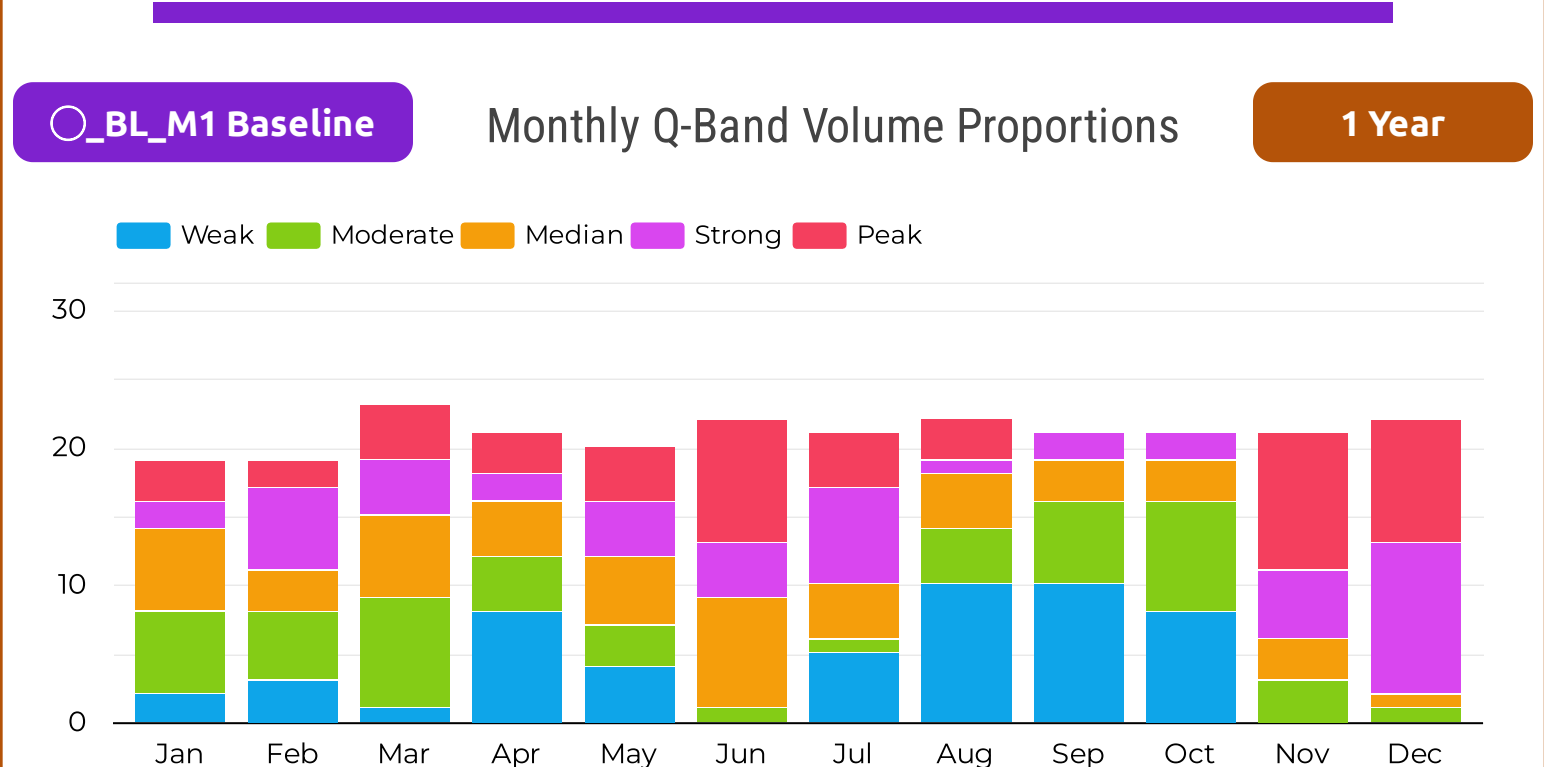
Date	○_BL_M1	Position	△_RL_M2	Peak List	Date_○_BL...	Peak List	Date_△_RL...
Dec 31, 2021	Moderate	First Active Date	Weak ▼	1	Dec 21, 2021	1	Dec 27, 2021
Dec 30, 2021	Median	2nd Active Date	Median ▼	2	Dec 17, 2021	2	Dec 21, 2021
Dec 29, 2021	Strong	3rd	Moderate ▼	3	Dec 16, 2021	3	Dec 16, 2021
Dec 28, 2021	Strong	4th	Median ▼	4	Dec 15, 2021	4	Dec 15, 2021
Dec 27, 2021	Strong	5th	Peak ▲	5	Dec 14, 2021	5	Dec 13, 2021
Dec 23, 2021	Strong	6th	Moderate ▲	6	Dec 13, 2021	6	Dec 9, 2021
Dec 22, 2021	Strong	7th	Moderate ▲	7	Dec 7, 2021	7	Dec 7, 2021
Dec 21, 2021	Peak	8th	Peak ▲	8	Dec 6, 2021	8	Dec 3, 2021
Dec 20, 2021	Strong	9th	Weak ▼	9	Dec 3, 2021	9	Dec 1, 2021
Dec 17, 2021	Peak	10th	Strong ▼	10	Nov 30, 2021	10	Nov 29, 2021

## Monthly / Seasonal Analysis Section - Volume M1 & Close Price % Change M2



**○\_BL\_M1 Baseline** Monthly Q-Band Volume Dispersion 1 Year

	Jan	Feb	Mar	Apr	May	Jun	Jul	Aug	Sep	Oct	Nov	Dec
Weak	2	3	1	8	4	0	5	10	10	8	0	0
Moderate	6	5	8	4	3	1	1	4	6	8	3	1
Median	6	3	6	4	5	8	4	4	3	3	3	1
Strong	2	6	4	2	4	4	7	1	2	2	5	11
Peak	3	2	4	3	4	9	4	3	0	0	10	9



**△\_RL\_M2 Reaction** Monthly Q-Band % Change Dispersion 1 Year

	Jan	Feb	Mar	Apr	May	Jun	Jul	Aug	Sep	Oct	Nov	Dec
Weak	5	3	3	2	6	8	2	4	5	6	4	3
Moderate	3	2	8	3	4	7	7	2	5	2	3	4
Median	2	4	0	8	2	1	6	9	7	7	1	3
Strong	5	7	6	6	2	3	3	4	2	2	7	3
Peak	4	3	6	2	6	3	3	3	2	4	6	9

