

Quintile Analysis Engine Report

[QAE Guide / Contact](#)

By Simon Hobbs



System Fundamentals

www.system-fundamentals.comMinimal guide provided below
→ See 'QAE Guide' for more details[Terms & Conditions](#)[Privacy Policy](#)

The **QAE Product** transforms 2 sets of cardinal daily metrics into ordinal **Q-Bands**, ranking and counting them across **Fixed Timeframes** using **Reverse Chronology**. The dataset is a closed 365/366-day historical envelope anchored to **Newest Date**. QAE processes 2 metric sets through 2 independent lenses: **M1 Baseline (BL)** and **M2 Reaction (RL)**. QAE is strictly historical making yesterday the newest allowable date.

Metric 1 - M1

→ Baseline Lens

○_BL =

Ranked by absolute state within the Complete One-Year Range

Metric 2 - M2

→ Reaction Lens

△_RL =

Reshaped to Reaction Intensity from Prior State then Ranked abs 1yr range

All containers show identification badges for timeframes plus lens type with metric identity

Border colors indicate timeframes

1 Month

3 Months

6 Months

1 Year

Distant 6M

Reserved space: Automated system status and integration details

QAE - Quintile Analysis Engine SEASONAL BACK-STITC PAGE

* Stock Market Skin *

REPORT TITLE: nVidia / NVDA / 2020 / NY / Metric 1 Volume / Metric 2 Close Price USD / EDT UTC -4hrs



Newest: Dec 31, 2020

Oldest: Jan 1, 2020

Newest Active Date: Dec 31, 2020

UTC-04:00 Atlantic Canada / Venezuela

QAE Timestamp: 2026-05-14 | 08:42:43

Day Count

366

Active Days

253

Participation

69.13%

○_BL_M1 Baseline

1 Year

Newest Active Dec 31, 2020
Volume

192,424,398

Weak

Consecutive Days
(no direction) Weak = 7

Lowest Volume

Dec 24, 2020

97,883,519

Highest Volume

Sep 4, 2020

1,463,682,785

BL Quintile Band M1
Volume Cut-Offs

Weak | Up To - 284,318,077

Moderate | Up To - 367,771,764

Median | Up To - 495,172,715

Strong | Up To - 660,693,721

Peak | Up To - 1,463,682,785

△_RL_M2 Reaction

1 Year

Newest Active Dec 31, 2020
Close Price % Change

0.684%

= 13.06

Weak ▼

Consecutive Days
Weak ▼ = 1
(no direction) Weak = 1

Lowest % Change

Jun 4, 2020

0.000%

Highest % Change

Mar 16, 2020

18.439%

RL Quintile Band M2
Close Price % Change Cut-Offs

Weak | Up To - 0.6849%

Moderate | Up To - 1.4223%

Median | Up To - 2.5156%

Strong | Up To - 3.9714%

Peak | Up To - 18.4385%

○_BL_M1 Baseline

△_RL_M2 Reaction

Newest Historical Activity

1 Year

Local History: Q-Bands Volume & Close Price % Change

Peak - Volume M1

Peak - Price % Change M2

Date	○_BL_M1	Position	△_RL_M2
Dec 31, 2020	Weak	First Active Date	Weak ▼
Dec 30, 2020	Weak	2nd Active Date	Median ▲
Dec 29, 2020	Weak	3rd	Weak ▲
Dec 28, 2020	Weak	4th	Moderate ▼
Dec 24, 2020	Weak	5th	Weak ▼
Dec 23, 2020	Weak	6th	Median ▼
Dec 22, 2020	Weak	7th	Weak ▼
Dec 21, 2020	Moderate	8th	Weak ▲
Dec 18, 2020	Moderate	9th	Weak ▼
Dec 17, 2020	Weak	10th	Moderate ▲

Peak List	Date_○_BL...
1	Oct 6, 2020
2	Sep 30, 2020
3	Sep 24, 2020
4	Sep 21, 2020
5	Sep 18, 2020
6	Sep 17, 2020
7	Sep 15, 2020
8	Sep 14, 2020
9	Sep 10, 2020
10	Sep 9, 2020

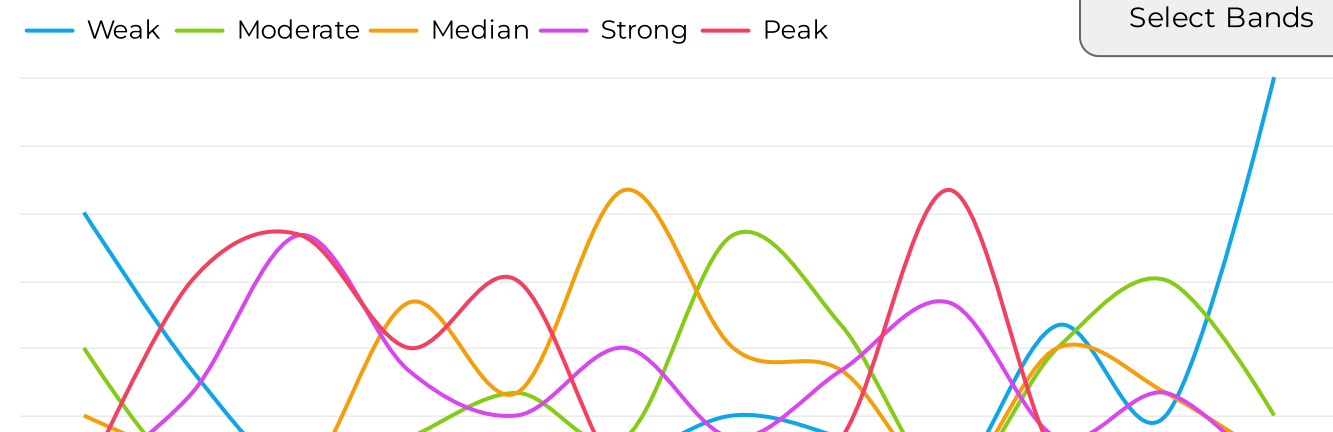
Peak List	Date_△_RL...
1	Nov 11, 2020
2	Nov 10, 2020
3	Nov 9, 2020
4	Nov 4, 2020
5	Oct 28, 2020
6	Oct 5, 2020
7	Oct 2, 2020
8	Sep 25, 2020
9	Sep 23, 2020
10	Sep 14, 2020

Monthly / Seasonal Analysis Section - Volume M1 & Close Price % Change M2

○_BL_M1 Baseline

Monthly Q-Band Volume Trajectory

1 Year



○_BL_M1 Baseline

Monthly Q-Band Volume Dispersion

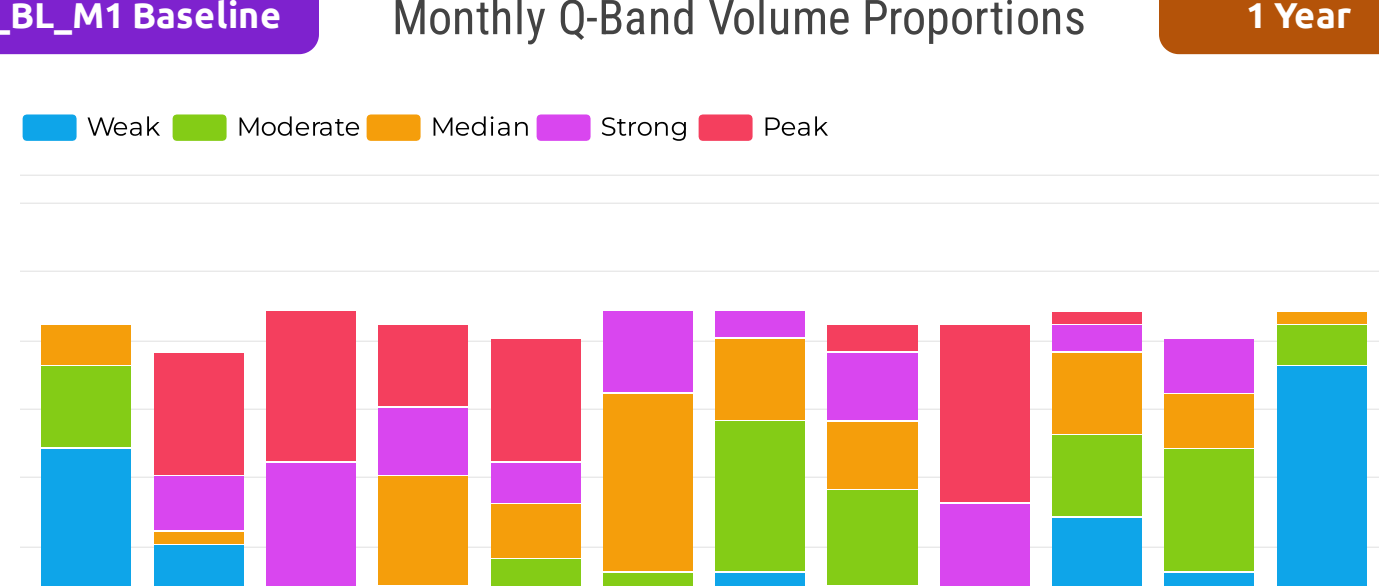
1 Year

	Jan	Feb	Mar	Apr	May	Jun	Jul	Aug	Sep	Oct	Nov	Dec
Weak	12	5	0	0	0	1	3	2	0	7	3	18
Moderate	6	0	0	2	4	2	11	7	0	6	9	3
Median	3	1	0	8	4	13	6	5	0	6	4	1
Strong	0	4	11	5	3	6	2	5	8	2	4	0
Peak	0	9	11	6	9	0	0	2	13	1	0	0

○_BL_M1 Baseline

Monthly Q-Band Volume Proportions

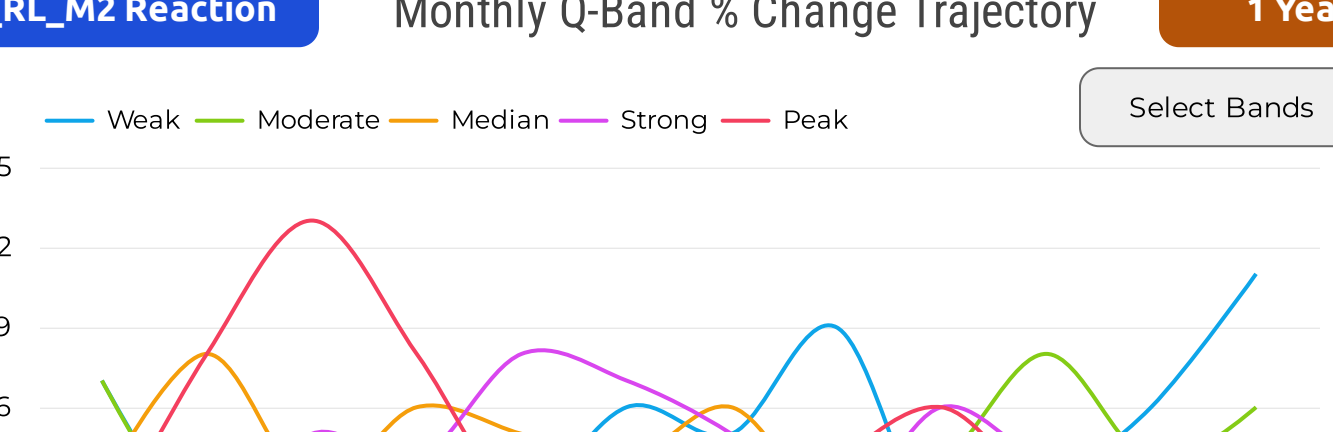
1 Year



△_RL_M2 Reaction

Monthly Q-Band % Change Trajectory

1 Year



△_RL_M2 Reaction

Monthly Q-Band % Change Dispersion

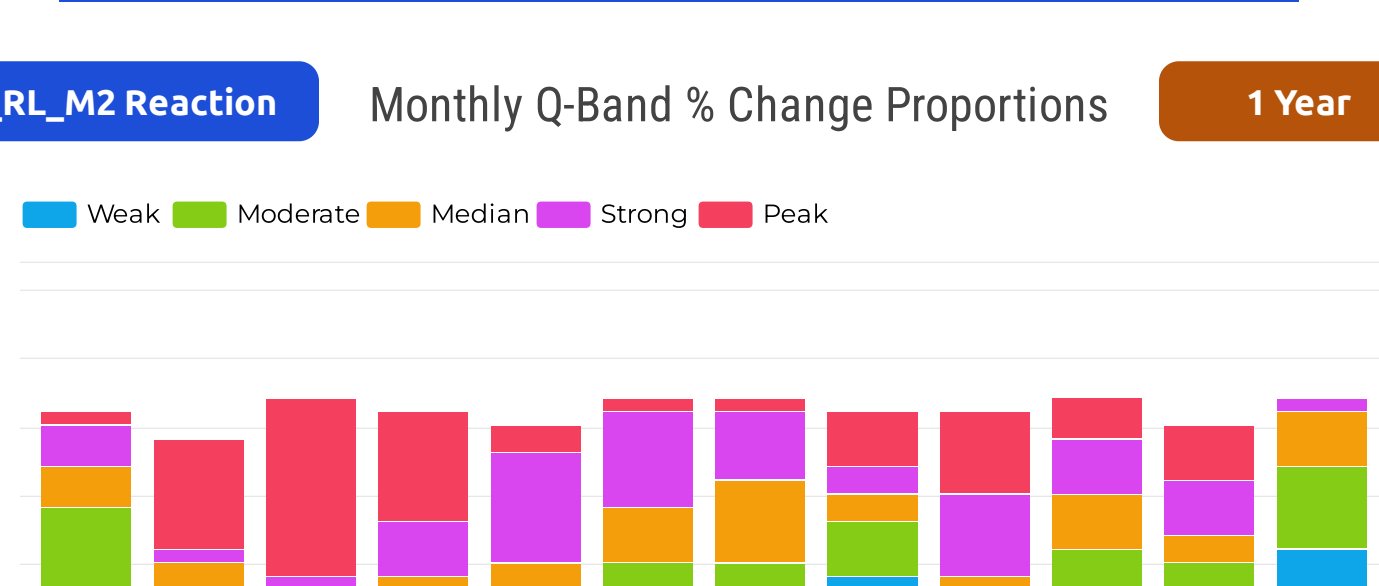
1 Year

	Jan	Feb	Mar	Apr	May	Jun	Jul	Aug	Sep	Oct	Nov	Dec
Weak	7	1	0	0	2	6	5	9	1	3	6	11
Moderate	7	1	1	3	3	4	5	4	4	8	4	6
Median	3	8	3	6	5	4	6	2	4	4	2	4
Strong	3	1	5	4	8	7	5	2	6	4	4	1
Peak	1	8	13	8	2	1	1	4	6	3	4	0

△_RL_M2 Reaction

Monthly Q-Band % Change Proportions

1 Year



△_RL_M2 Direction ▲ ▼

Monthly Directional Polarity

1 Year

