

# Quintile Analysis Engine Report

[QAE Guide / Contact](#)

By Simon Hobbs



System Fundamentals

www.system-fundamentals.com

Minimal guide provided below  
→ See 'QAE Guide' for more details[Terms & Conditions](#)[Privacy Policy](#)

The **QAE Product** transforms 2 sets of cardinal daily metrics into ordinal **Q-Bands**, ranking and counting them across **Fixed Timeframes** using **Reverse Chronology**. The dataset is a closed 365/366-day historical envelope anchored to **Newest Date**. QAE processes 2 metric sets through 2 independent lenses: **M1 Baseline (BL)** and **M2 Reaction (RL)**. QAE is strictly historical making yesterday the newest allowable date.

**Metric 1 - M1** → Baseline Lens **○\_BL =** Ranked by absolute state within the Complete One-Year Range

**Metric 2 - M2** → Reaction Lens **△\_RL =** Reshaped to Reaction Intensity from Prior State then Ranked abs 1yr range

All containers show identification badges for timeframes plus lens type with metric identity

**Border colors indicate timeframes**

**1 Month** **3 Months** **6 Months**

**1 Year** **Distant 6M**

Reserved space: Automated system status and integration details

**QAE - Quintile Analysis Engine**  
SEASONAL BACK-STITC PAGE  
\* Stock Market Skin \*

REPORT TITLE: nVidia / NVDA / 2018 / NY / Metric 1 Volume / Metric 2 Close Price USD / EDT UTC -4hrs

**NVIDIA**

Newest: Dec 31, 2018  
Oldest: Jan 1, 2018  
Newest Active Date: Dec 31, 2018

UTC-04:00 Atlantic Canada / Venezuela

QAE Timestamp: 2026-05-15 | 19:12:26

Day Count: 365 | Active Days: 251 | Participation: 68.77%

**○\_BL\_M1 Baseline** **1 Year**

**Newest Active Dec 31, 2018**  
**Volume**  
**465,139,995**

Median

Consecutive Days (no direction) Median = 1

**Lowest Volume** **Highest Volume**  
**Jul 16, 2018** **Nov 16, 2018**  
**197,037,038** **1,963,519,180**

**BL Quintile Band M1**  
**Volume Cut-Offs**

Weak | Up To - 350,791,036  
Moderate | Up To - 432,259,596  
Median | Up To - 553,828,434  
Strong | Up To - 702,347,553  
Peak | Up To - 1,963,519,180

**△\_RL\_M2 Reaction** **1 Year**

**Newest Active Dec 31, 2018**  
**Close Price % Change**  
**0.000%** = 3.34

Weak ▼

Consecutive Days Weak ▼ = 1 (no direction) Weak = 1

**Lowest % Change** **Highest % Change**  
**Jan 9, 2018** **Nov 16, 2018**  
**0.000%** **18.775%**

**RL Quintile Band M2**  
**Close Price % Change Cut-Offs**

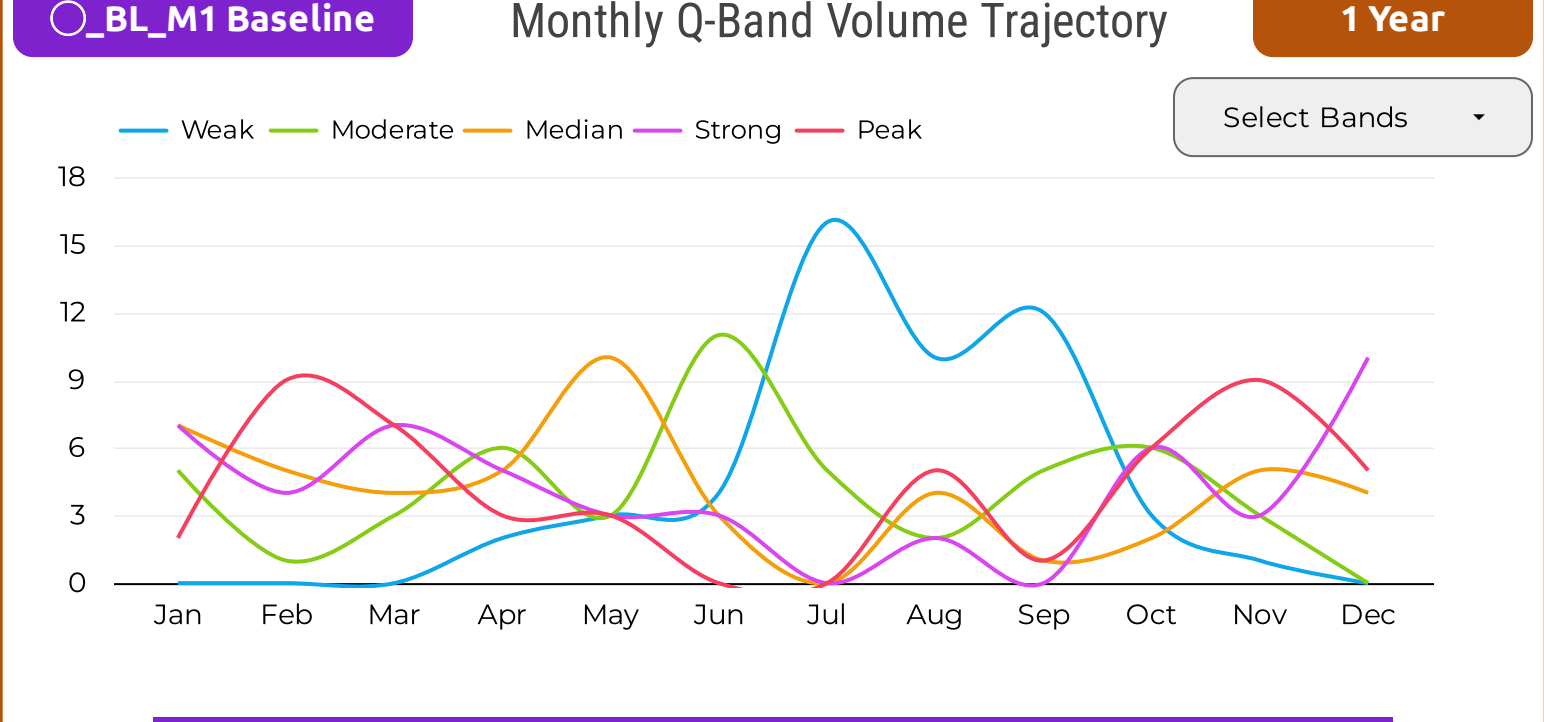
Weak | Up To - 0.5357%  
Moderate | Up To - 1.1111%  
Median | Up To - 1.9868%  
Strong | Up To - 3.4156%  
Peak | Up To - 18.7747%

**○\_BL\_M1 Baseline** & **△\_RL\_M2 Reaction** **Newest Historical Activity** **1 Year**

Local History: Q-Bands Volume & Close Price % Change | Peak - Volume M1 | Peak - Price % Change M2

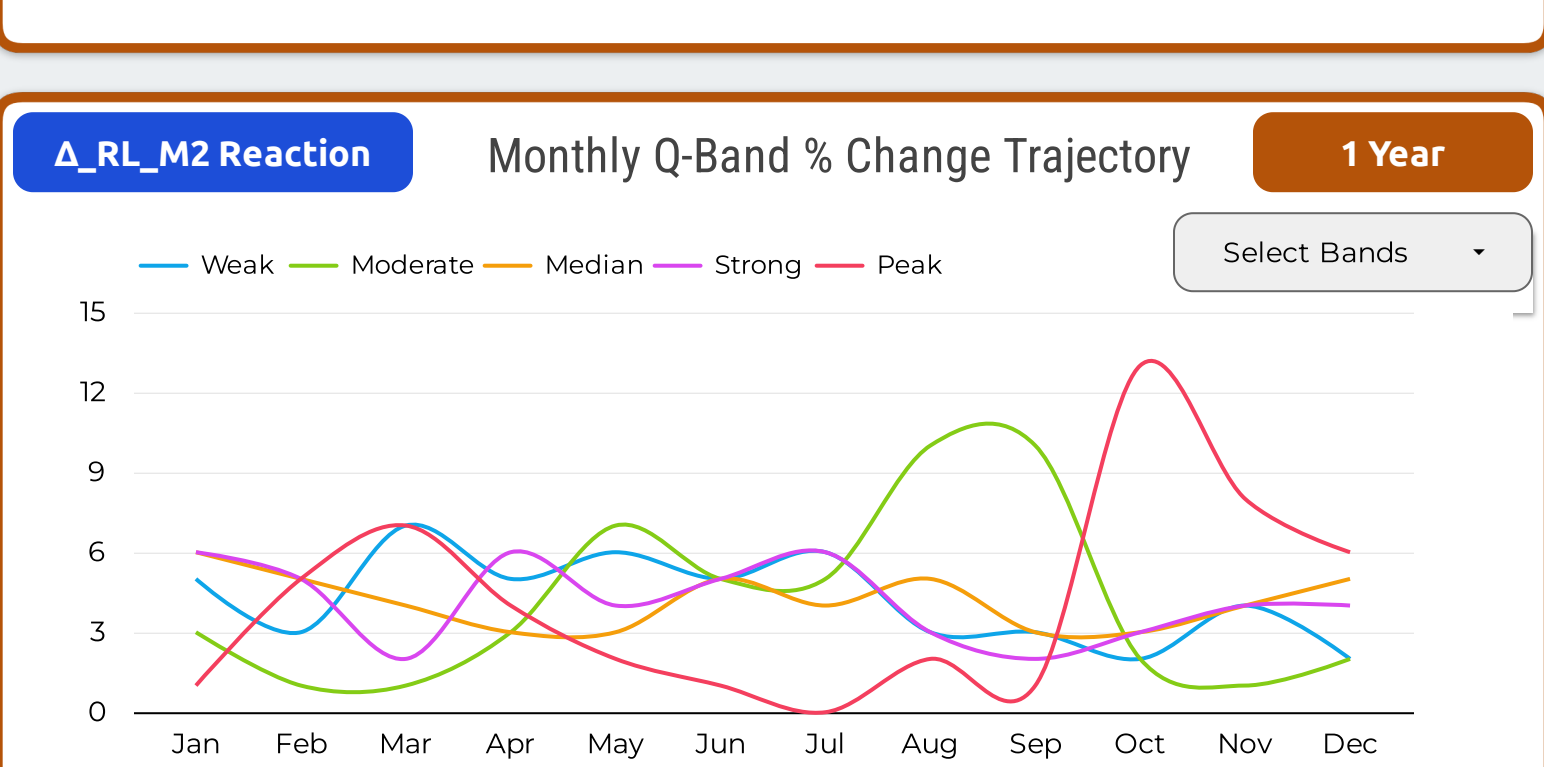
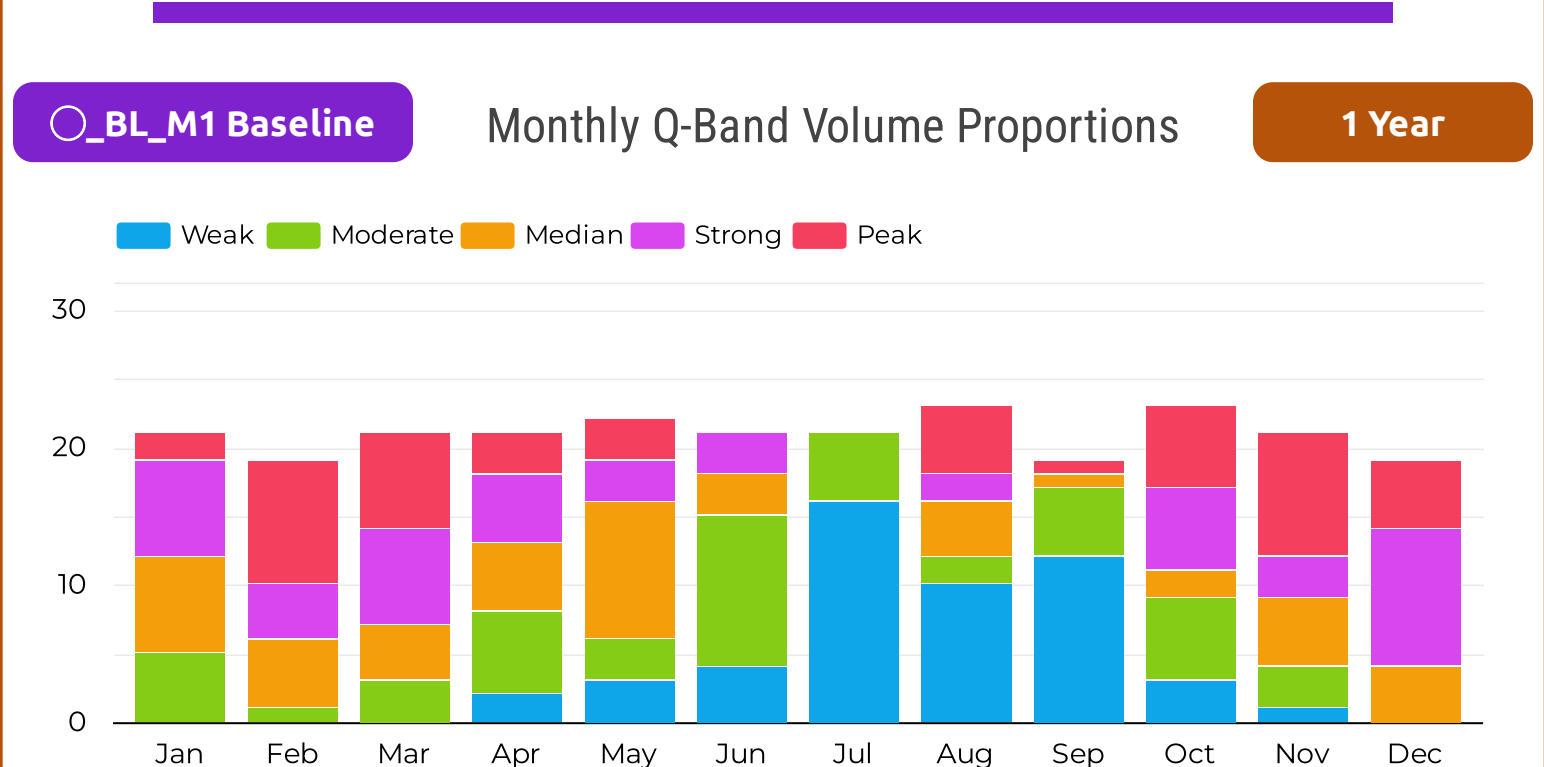
Date	○_BL_M1	Position	△_RL_M2	Peak List	Date_○_BL...	Peak List	Date_△_RL...
Dec 31, 2018	Median	First Active Date	Weak ▼	1	Dec 21, 2018	1	Dec 26, 2018
Dec 28, 2018	Strong	2nd Active Date	Median ▲	2	Dec 20, 2018	2	Dec 21, 2018
Dec 27, 2018	Strong	3rd	Median ▼	3	Dec 19, 2018	3	Dec 19, 2018
Dec 26, 2018	Strong	4th	Peak ▲	4	Dec 4, 2018	4	Dec 7, 2018
Dec 24, 2018	Median	5th	Median ▼	5	Dec 3, 2018	5	Dec 4, 2018
Dec 21, 2018	Peak	6th	Peak ▼	6	Nov 30, 2018	6	Dec 3, 2018
Dec 20, 2018	Peak	7th	Strong ▼	7	Nov 28, 2018	7	Nov 30, 2018
Dec 19, 2018	Peak	8th	Peak ▼	8	Nov 27, 2018	8	Nov 28, 2018
Dec 18, 2018	Strong	9th	Strong ▲	9	Nov 26, 2018	9	Nov 26, 2018
Dec 17, 2018	Strong	10th	Median ▼	10	Nov 21, 2018	10	Nov 19, 2018

## Monthly / Seasonal Analysis Section - Volume M1 & Close Price % Change M2



**○\_BL\_M1 Baseline** **Monthly Q-Band Volume Dispersion** **1 Year**

	Jan	Feb	Mar	Apr	May	Jun	Jul	Aug	Sep	Oct	Nov	Dec
Weak	0	0	0	2	3	4	16	10	12	3	1	0
Moderate	5	1	3	6	3	11	5	2	5	6	3	0
Median	7	5	4	5	10	3	0	4	1	2	5	4
Strong	7	4	7	5	3	3	0	2	0	6	3	10
Peak	2	9	7	3	3	0	0	5	1	6	9	5



**△\_RL\_M2 Reaction** **Monthly Q-Band % Change Dispersion** **1 Year**

	Jan	Feb	Mar	Apr	May	Jun	Jul	Aug	Sep	Oct	Nov	Dec
Weak	5	3	7	5	6	5	6	3	3	2	4	2
Moderate	3	1	1	3	7	5	5	10	10	2	1	2
Median	6	5	4	3	3	5	4	5	3	3	4	5
Strong	6	5	2	6	4	5	6	3	2	3	4	4
Peak	1	5	7	4	2	1	0	2	1	13	8	6

