

Quintile Analysis Engine Report

[QAE Guide / Contact](#)

By Simon Hobbs



System Fundamentals

www.system-fundamentals.com

Minimal guide provided below
→ See 'QAE Guide' for more details[Terms & Conditions](#)[Privacy Policy](#)

The **QAE Product** transforms 2 sets of cardinal daily metrics into ordinal **Q-Bands**, ranking and counting them across **Fixed Timeframes** using **Reverse Chronology**. The dataset is a closed 365/366-day historical envelope anchored to **Newest Date**. QAE processes 2 metric sets through 2 independent lenses: **M1 Baseline (BL)** and **M2 Reaction (RL)**. QAE is strictly historical making yesterday the newest allowable date.

Metric 1 - M1 → Baseline Lens **○_BL =** Ranked by absolute state within the Complete One-Year Range

Metric 2 - M2 → Reaction Lens **△_RL =** Reshaped to Reaction Intensity from Prior State then Ranked abs 1yr range

All containers show identification badges for timeframes plus lens type with metric identity

Border colors indicate timeframes

1 Month

3 Months

6 Months

1 Year

Distant 6M

Reserved space: Automated system status and integration details

QAE - Quintile Analysis Engine
SEASONAL BACK-STITC PAGE
* Stock Market Skin *

REPORT TITLE: nVidia / NVDA / 2017 / NY / Metric 1 Volume / Metric 2 Close Price USD / EDT UTC -4hrs

Newest: Dec 31, 2017
Oldest: Jan 1, 2017
Newest Active Date: Dec 29, 2017

UTC-04:00 Atlantic Canada / Venezuela

QAE Timestamp: 2026-05-14 | 09:23:46

Day Count: 365
Active Days: 251
Participation: 68.77%

○_BL_M1 Baseline 1 Year

Newest Active Dec 29, 2017
Volume
279,964,637

Weak

Consecutive Days (no direction) Weak = 4

Lowest Volume: Nov 24, 2017 (180,751,998)
Highest Volume: Jun 9, 2017 (3,692,928,083)

BL Quintile Band M1
Volume Cut-Offs

- Weak | Up To - 428,050,796
- Moderate | Up To - 513,349,595
- Median | Up To - 644,871,154
- Strong | Up To - 913,483,991
- Peak | Up To - 3,692,928,083

△_RL_M2 Reaction 1 Year

Newest Active Dec 29, 2017
Close Price % Change
2.024% = 4.84

Strong ▼

Consecutive Days Strong ▼ = 1 (no direction) Strong = 1

Lowest % Change: Jan 13, 2017 (0.000%)
Highest % Change: May 10, 2017 (17.899%)

RL Quintile Band M2
Close Price % Change Cut-Offs

- Weak | Up To - 0.3968%
- Moderate | Up To - 0.9311%
- Median | Up To - 1.5625%
- Strong | Up To - 2.6157%
- Peak | Up To - 17.8988%

○_BL_M1 Baseline & △_RL_M2 Reaction Newest Historical Activity 1 Year

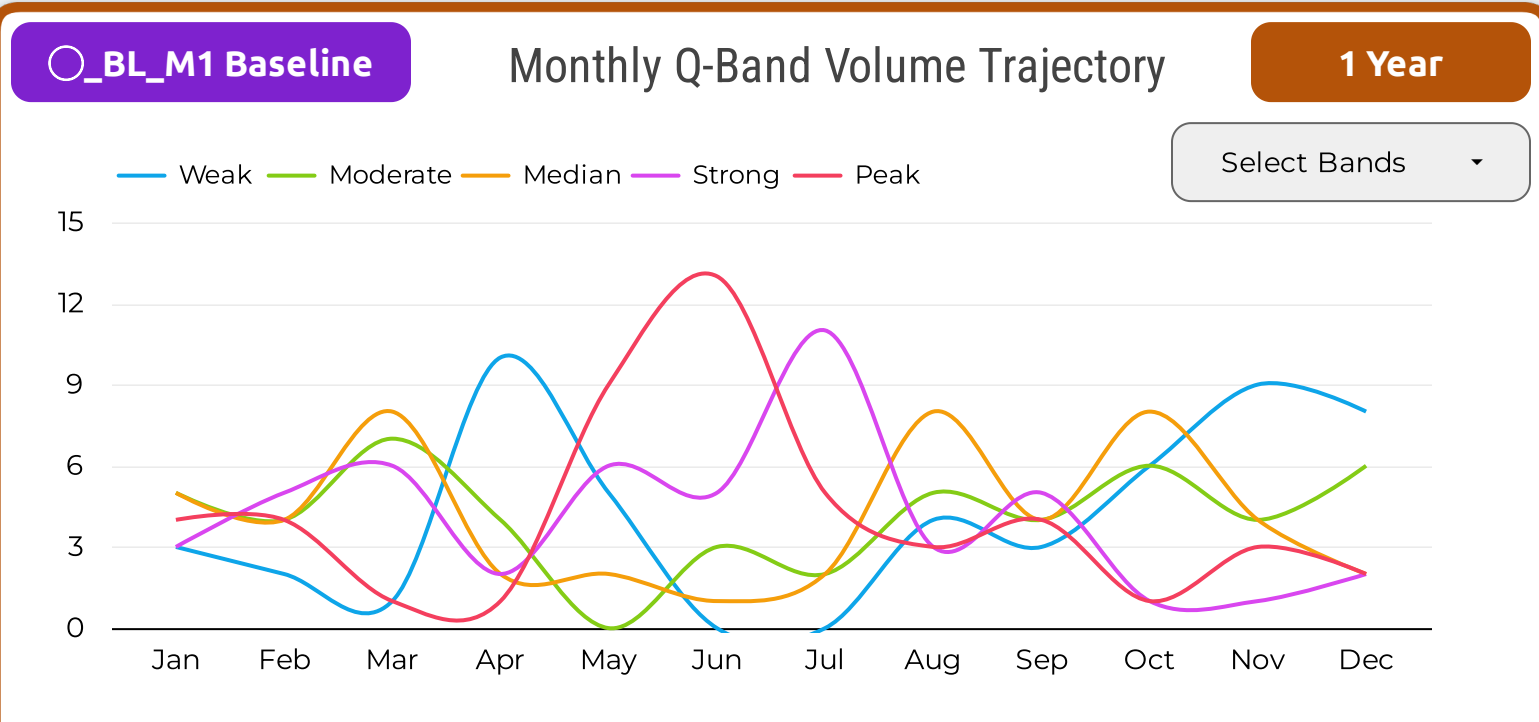
Local History: Q-Bands Volume & Close Price % Change

Date	○_BL_M1	Position	△_RL_M2
Dec 29, 2017	Weak	First Active Date	Strong ▼
Dec 28, 2017	Weak	2nd Active Date	Weak ▲
Dec 27, 2017	Weak	3rd	Weak ▼
Dec 26, 2017	Weak	4th	Median ▲
Dec 22, 2017	Moderate	5th	Moderate ▼
Dec 21, 2017	Weak	6th	Moderate ▼
Dec 20, 2017	Weak	7th	Moderate ▲
Dec 19, 2017	Weak	8th	Median ▼
Dec 18, 2017	Moderate	9th	Peak ▲
Dec 15, 2017	Strong	10th	Peak ▲

Peak List	Date_○_BL...
1	Dec 5, 2017
2	Dec 4, 2017
3	Nov 29, 2017
4	Nov 10, 2017
5	Nov 9, 2017
6	Oct 10, 2017
7	Sep 26, 2017
8	Sep 21, 2017
9	Sep 18, 2017
10	Sep 15, 2017

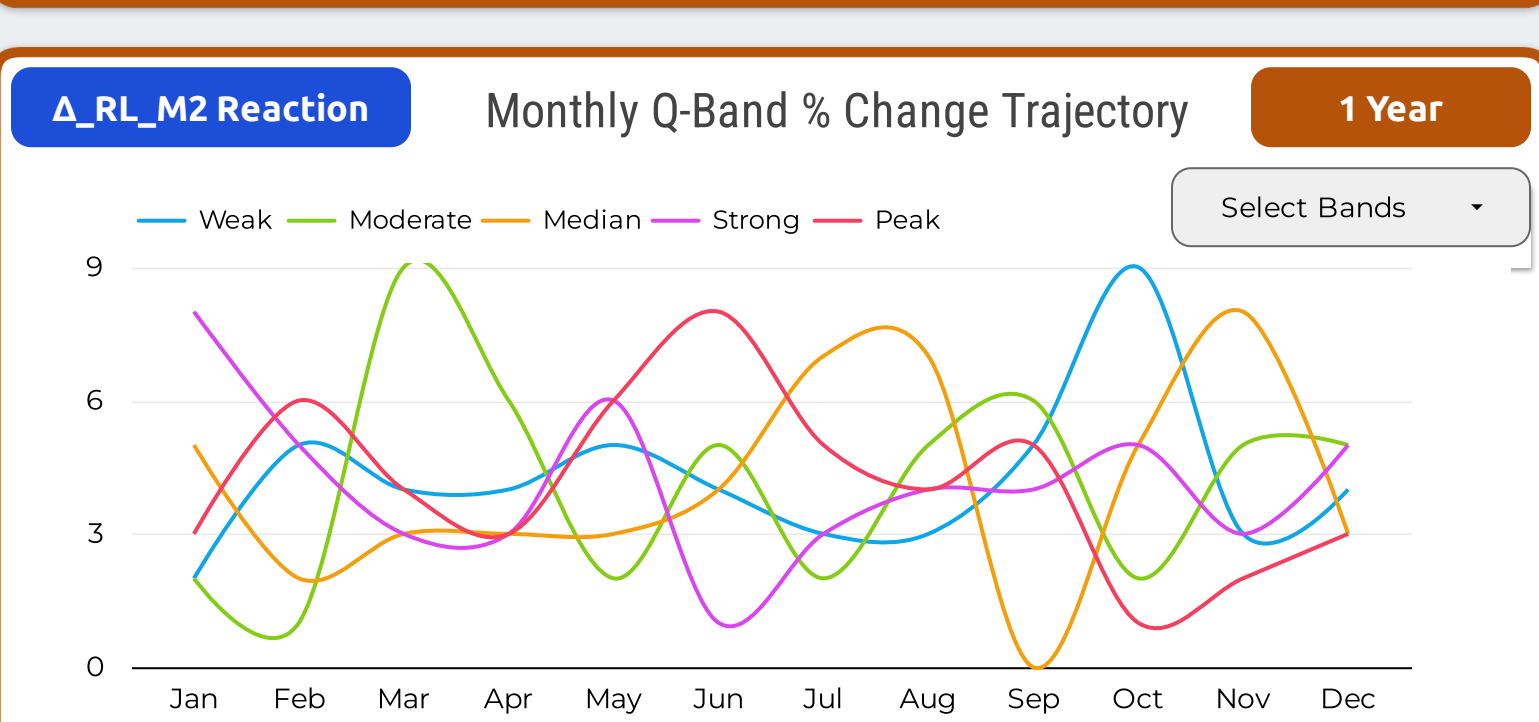
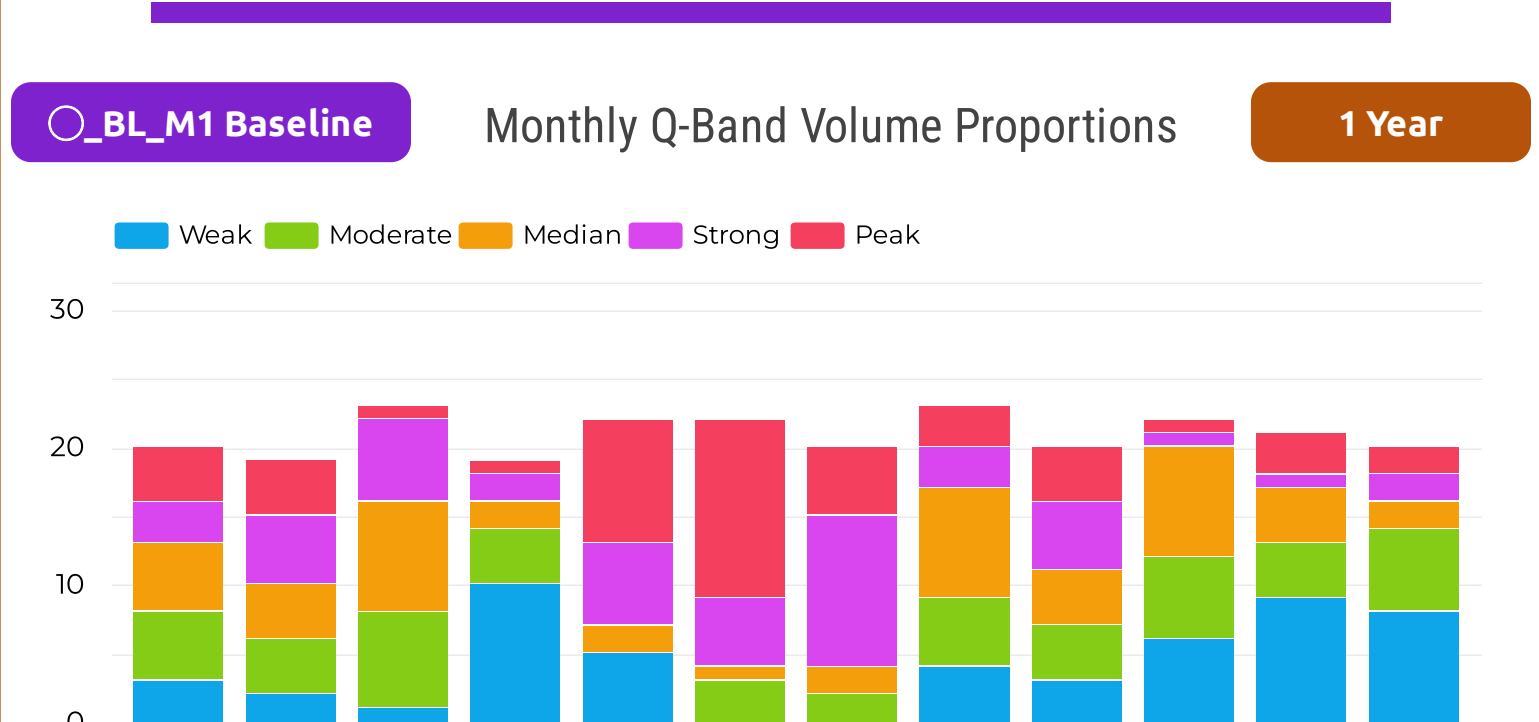
Peak List	Date_△_RL...
1	Dec 18, 2017
2	Dec 15, 2017
3	Dec 4, 2017
4	Nov 29, 2017
5	Nov 10, 2017
6	Oct 27, 2017
7	Sep 25, 2017
8	Sep 21, 2017
9	Sep 18, 2017
10	Sep 15, 2017

Monthly / Seasonal Analysis Section - Volume M1 & Close Price % Change M2



○_BL_M1 Baseline Monthly Q-Band Volume Dispersion 1 Year

	Jan	Feb	Mar	Apr	May	Jun	Jul	Aug	Sep	Oct	Nov	Dec
Weak	3	2	1	10	5	0	0	4	3	6	9	8
Moderate	5	4	7	4	0	3	2	5	4	6	4	6
Median	5	4	8	2	2	1	2	8	4	8	4	2
Strong	3	5	6	2	6	5	11	3	5	1	1	2
Peak	4	4	1	1	9	13	5	3	4	1	3	2



△_RL_M2 Reaction Monthly Q-Band % Change Dispersion 1 Year

	Jan	Feb	Mar	Apr	May	Jun	Jul	Aug	Sep	Oct	Nov	Dec
Weak	2	5	4	4	5	4	3	3	5	9	3	4
Moderate	2	1	9	6	2	5	2	5	6	2	5	5
Median	5	2	3	3	3	4	7	7	0	5	8	3
Strong	8	5	3	3	6	1	3	4	4	5	3	5
Peak	3	6	4	3	6	8	5	4	5	1	2	3

