

Quintile Analysis Engine Report

[QAE Guide / Contact](#)

By Simon Hobbs



System Fundamentals

www.system-fundamentals.comMinimal guide provided below
→ See 'QAE Guide' for more details[Terms & Conditions](#)[Privacy Policy](#)

The **QAE Product** transforms 2 sets of cardinal daily metrics into ordinal **Q-Bands**, ranking and counting them across **Fixed Timeframes** using **Reverse Chronology**. The dataset is a closed 365/366-day historical envelope anchored to **Newest Date**. QAE processes 2 metric sets through 2 independent lenses: **M1 Baseline (BL)** and **M2 Reaction (RL)**. QAE is strictly historical making yesterday the newest allowable date.

Metric 1 - M1 → Baseline Lens **○_BL =** Ranked by absolute state within the Complete One-Year Range

Metric 2 - M2 → Reaction Lens **△_RL =** Reshaped to Reaction Intensity from Prior State then Ranked abs 1yr range

All containers show identification badges for timeframes plus lens type with metric identity

Border colors indicate timeframes

1 Month **3 Months** **6 Months**

1 Year **Distant 6M**

Reserved space: Automated system status and integration details

QAE - Quintile Analysis Engine
SEASONAL BACK-STITC PAGE
* Stock Market Skin *

REPORT TITLE: nVidia / NVDA / 2016 / NY / Metric 1 Volume / Metric 2 Close Price USD / EDT UTC -4hrs

NVIDIA

Newest: Dec 31, 2016
Oldest: Jan 1, 2016
Newest Active Date: Dec 30, 2016

UTC-04:00 Atlantic Canada / Venezuela

QAE Timestamp: 2026-05-12 | 01:07:19

Day Count: 366 | Active Days: 252 | Participation: 68.85%

○_BL_M1 Baseline **1 Year**

Newest Active Dec 30, 2016
Volume
1,212,930,468
Peak

Consecutive Days (no direction) Peak = 12

Lowest Volume **Highest Volume**
Mar 4, 2016 **Nov 11, 2016**
175,305,358 **2,295,764,817**

BL Quintile Band M1
Volume Cut-Offs

Weak | Up To - 279,930,053
Moderate | Up To - 330,825,757
Median | Up To - 396,636,636
Strong | Up To - 484,667,755
Peak | Up To - 2,295,764,817

△_RL_M2 Reaction **1 Year**

Newest Active Dec 30, 2016
Close Price % Change
4.301% = 2.67
Peak ▼

Consecutive Days Peak ▼ = 1 (no direction) Peak = 1

Lowest % Change **Highest % Change**
Jan 11, 2016 **Nov 11, 2016**
0.000% **30.178%**

RL Quintile Band M2
Close Price % Change Cut-Offs

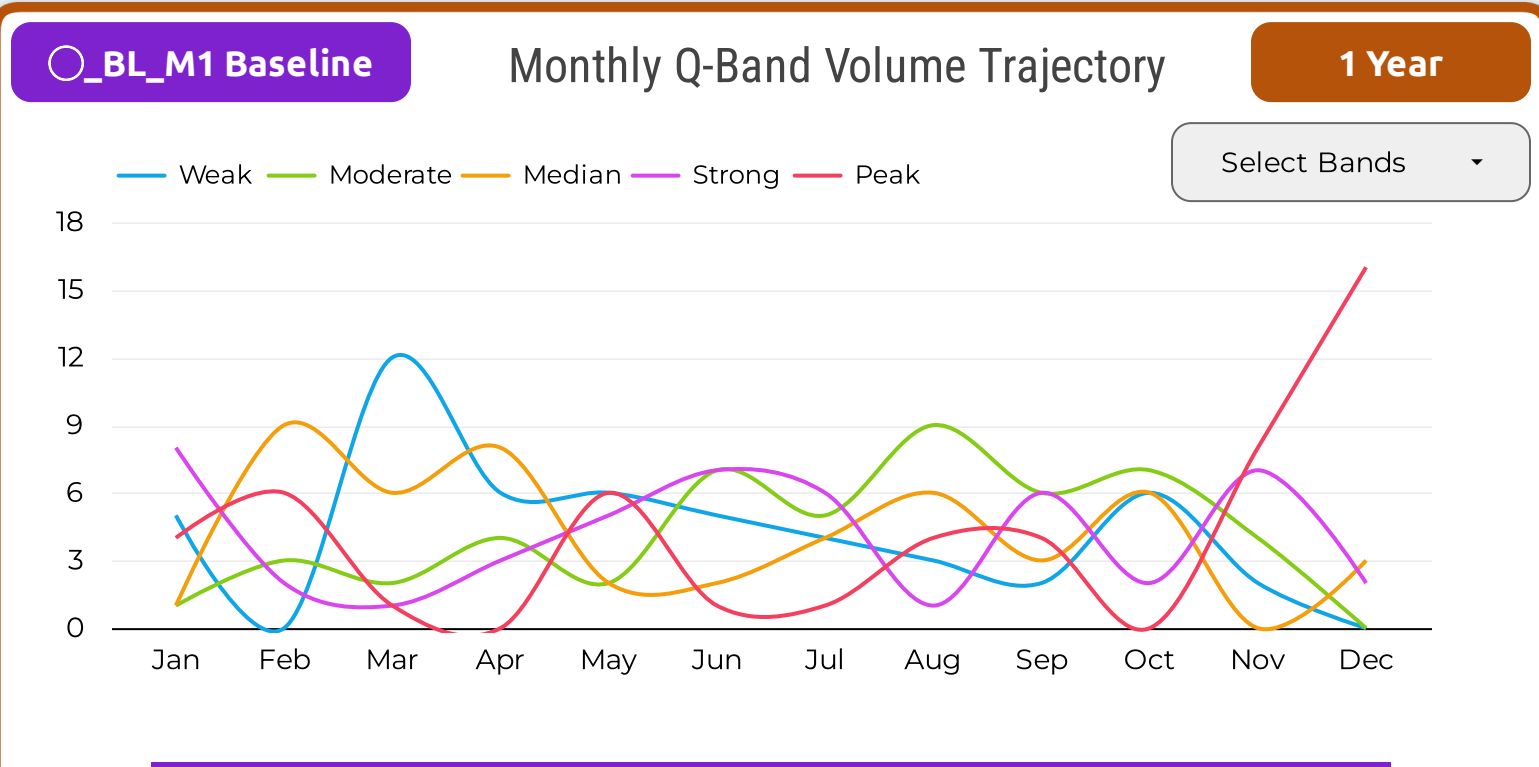
Weak | Up To - 0.0000%
Moderate | Up To - 0.8963%
Median | Up To - 1.4205%
Strong | Up To - 2.3443%
Peak | Up To - 30.1775%

○_BL_M1 Baseline & **△_RL_M2 Reaction** **Newest Historical Activity** **1 Year**

Local History: Q-Bands Volume & Close Price % Change | Peak - Volume M1 | Peak - Price % Change M2

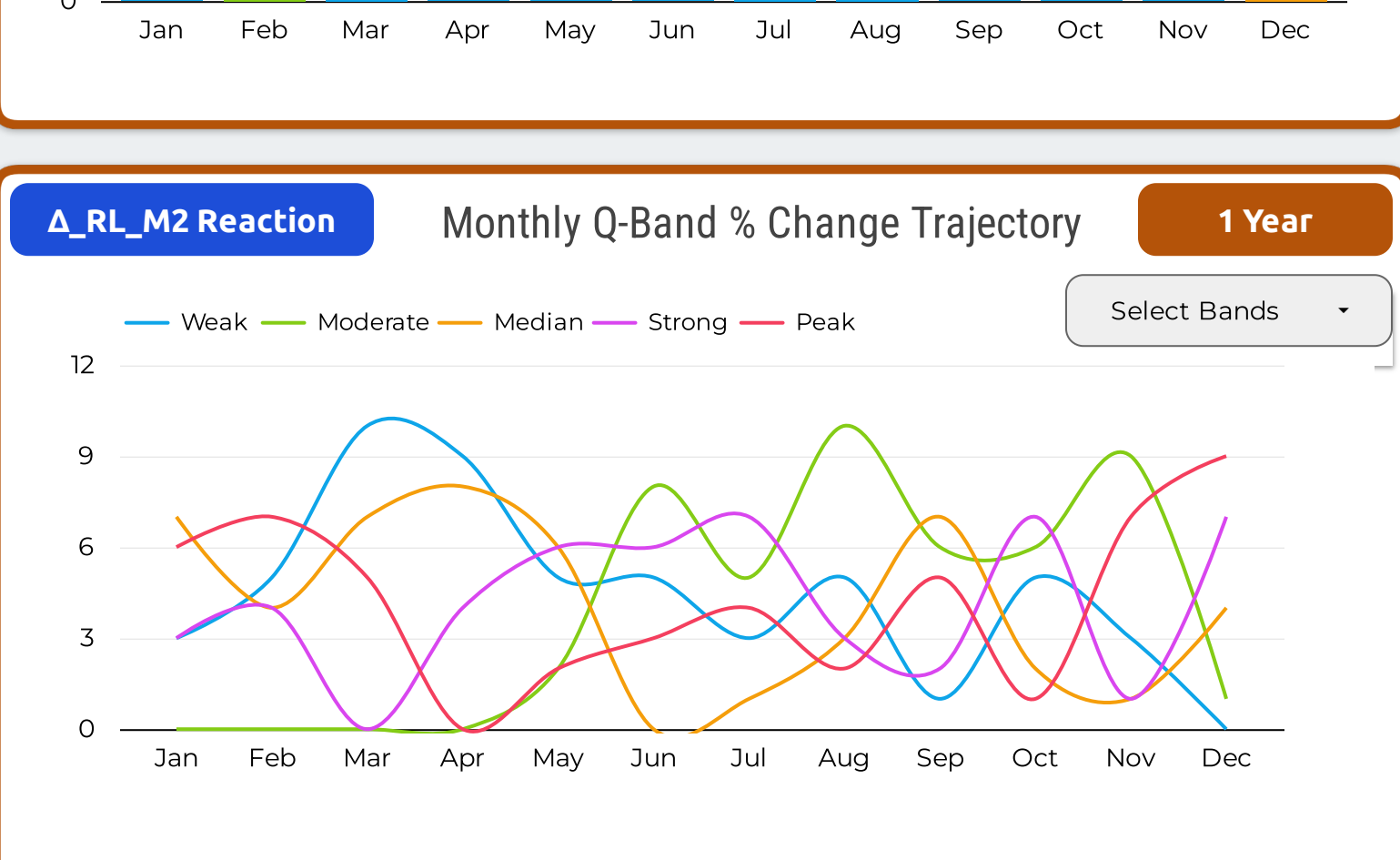
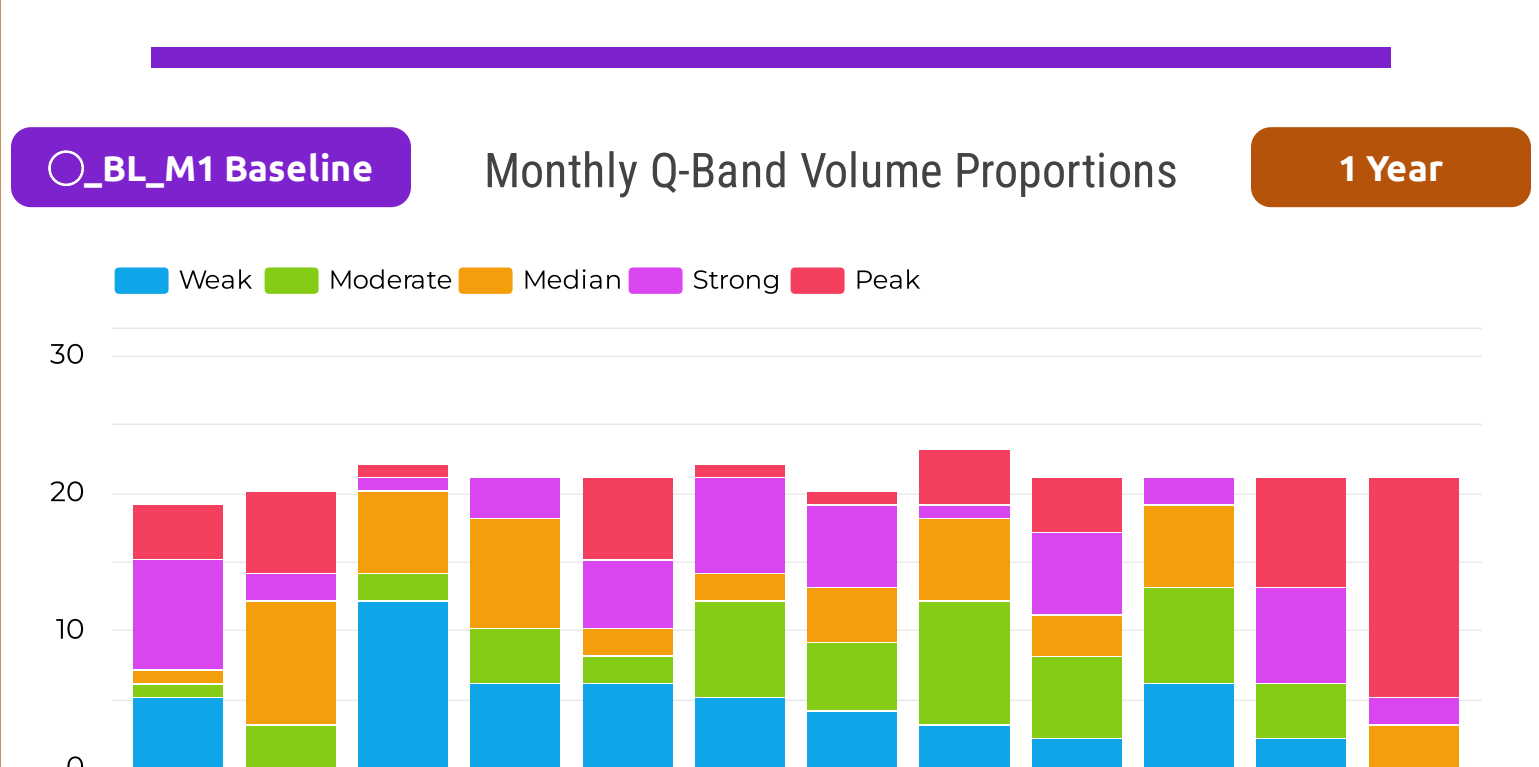
Date	○_BL_M1	Position	△_RL_M2	Peak List	Date_○_BL...	Peak List	Date_△_RL...
Dec 30, 2016	Peak	First Active Date	Peak ▼	1	Dec 30, 2016	1	Dec 30, 2016
Dec 29, 2016	Peak	2nd Active Date	Strong ▲	2	Dec 29, 2016	2	Dec 28, 2016
Dec 28, 2016	Peak	3rd	Peak ▼	3	Dec 28, 2016	3	Dec 27, 2016
Dec 27, 2016	Peak	4th	Peak ▲	4	Dec 27, 2016	4	Dec 20, 2016
Dec 23, 2016	Peak	5th	Strong ▲	5	Dec 23, 2016	5	Dec 15, 2016
Dec 22, 2016	Peak	6th	Median ▲	6	Dec 22, 2016	6	Dec 14, 2016
Dec 21, 2016	Peak	7th	Moderate ▲	7	Dec 21, 2016	7	Dec 12, 2016
Dec 20, 2016	Peak	8th	Peak ▲	8	Dec 20, 2016	8	Dec 5, 2016
Dec 19, 2016	Peak	9th	Median ▲	9	Dec 19, 2016	9	Dec 1, 2016
Dec 16, 2016	Peak	10th	Strong ▲	10	Dec 16, 2016	10	Nov 16, 2016

Monthly / Seasonal Analysis Section - Volume M1 & Close Price % Change M2



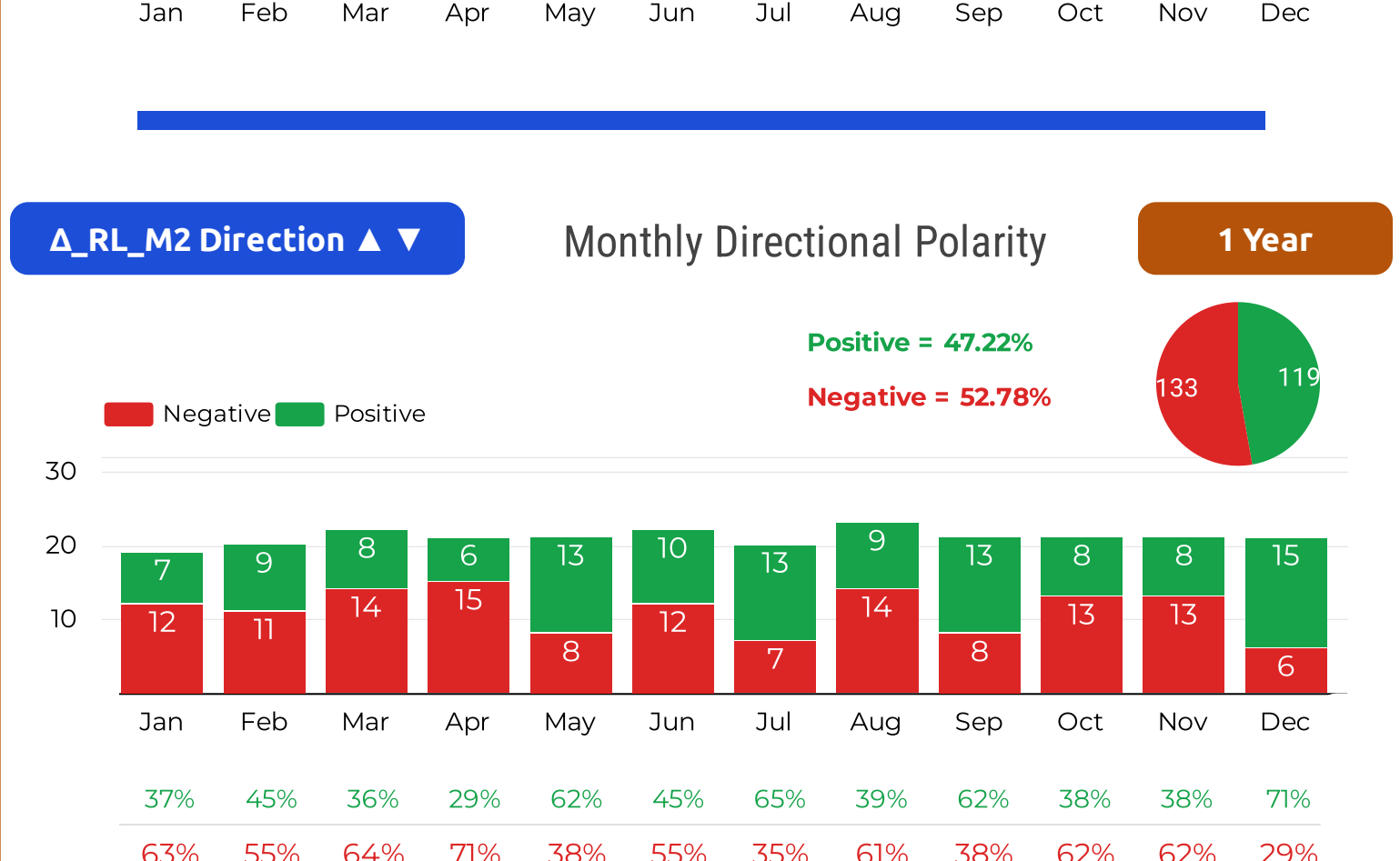
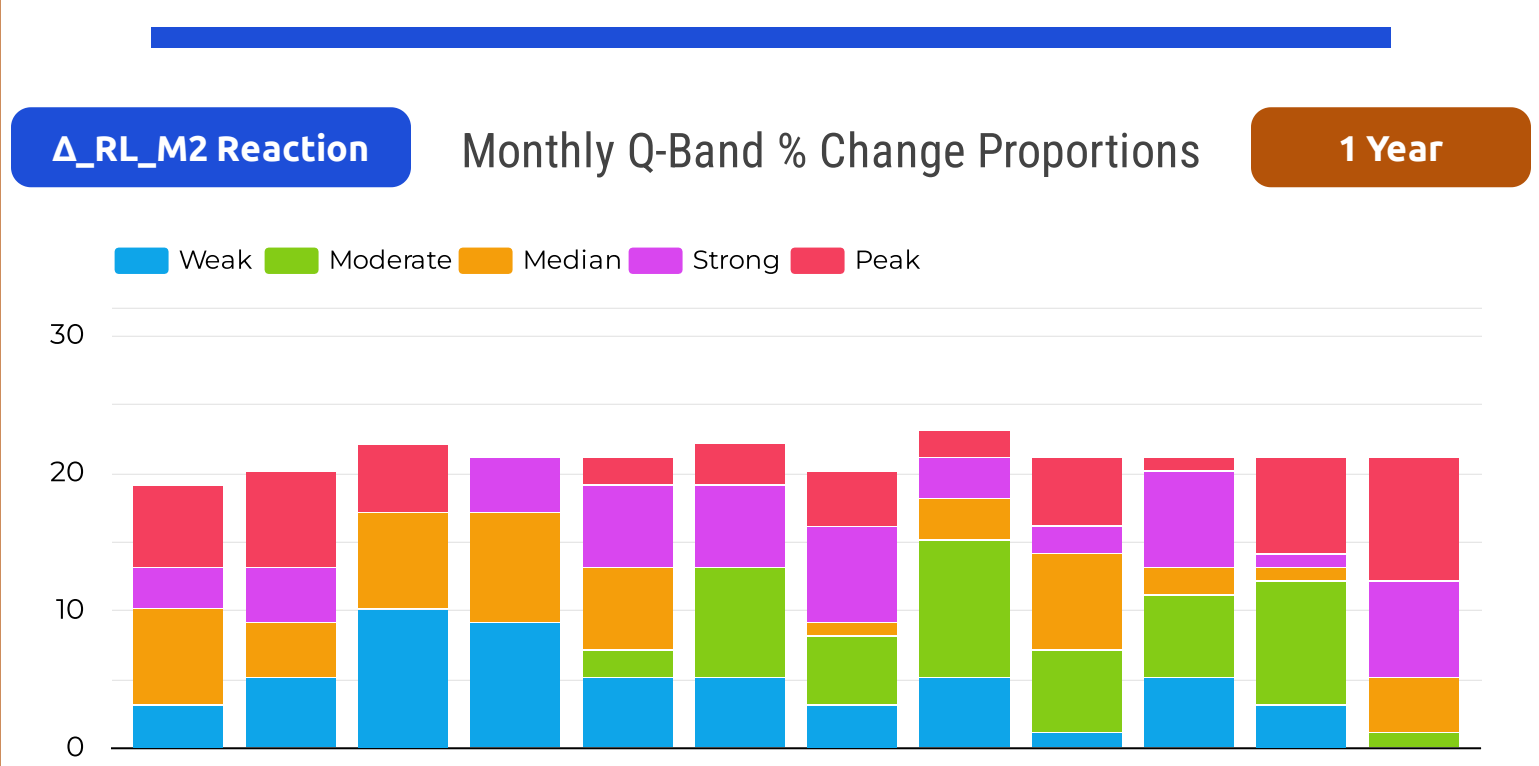
○_BL_M1 Baseline **Monthly Q-Band Volume Dispersion** **1 Year**

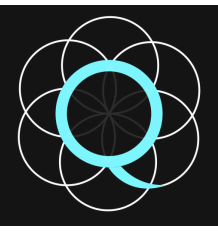
	Jan	Feb	Mar	Apr	May	Jun	Jul	Aug	Sep	Oct	Nov	Dec
Weak	5	0	12	6	6	5	4	3	2	6	2	0
Moderate	1	3	2	4	2	7	5	9	6	7	4	0
Median	1	9	6	8	2	2	4	6	3	6	0	3
Strong	8	2	1	3	5	7	6	1	6	2	7	2
Peak	4	6	1	0	6	1	1	4	4	0	8	16



△_RL_M2 Reaction **Monthly Q-Band % Change Dispersion** **1 Year**

	Jan	Feb	Mar	Apr	May	Jun	Jul	Aug	Sep	Oct	Nov	Dec
Weak	3	5	10	9	5	5	3	5	1	5	3	0
Moderate	0	0	0	0	2	8	5	10	6	6	9	1
Median	7	4	7	8	6	0	1	3	7	2	1	4
Strong	3	4	0	4	6	6	7	3	2	7	1	7
Peak	6	7	5	0	2	3	4	2	5	1	7	9





Quintile Analysis Engine Report

[QAE Guide / Contact](#)

By Simon Hobbs



System Fundamentals

www.system-fundamentals.comMinimal guide provided below
→ See 'QAE Guide' for more details[Terms & Conditions](#)[Privacy Policy](#)

The **QAE Product** transforms 2 sets of cardinal daily metrics into ordinal **Q-Bands**, ranking and counting them across **Fixed Timeframes** using **Reverse Chronology**. The dataset is a closed 365/366-day historical envelope anchored to **Newest Date**. QAE processes 2 metric sets through 2 independent lenses: **M1 Baseline (BL)** and **M2 Reaction (RL)**. QAE is strictly historical making yesterday the newest allowable date.

Metric 1 - M1 → Baseline Lens **○_BL =** Ranked by absolute state within the Complete One-Year Range

Metric 2 - M2 → Reaction Lens **△_RL =** Reshaped to Reaction Intensity from Prior State then Ranked abs 1yr range

All containers show identification badges for timeframes plus lens type with metric identity

Border colors indicate timeframes

1 Month **3 Months** **6 Months**

1 Year **Distant 6M**

Reserved space: Automated system status and integration details

QAE - Quintile Analysis Engine
SEASONAL BACK-STITC PAGE
* Stock Market Skin *

REPORT TITLE: nVidia / NVDA / 2017 / NY / Metric 1 Volume / Metric 2 Close Price USD / EDT UTC -4hrs

Newest: Dec 31, 2017
Oldest: Jan 1, 2017
Newest Active Date: Dec 29, 2017

UTC-04:00 Atlantic Canada / Venezuela

QAE Timestamp: 2026-05-14 | 09:23:46

Day Count: 365
Active Days: 251
Participation: 68.77%

○_BL_M1 Baseline **1 Year**

Newest Active Dec 29, 2017
Volume
279,964,637

Weak

Consecutive Days (no direction) Weak = 4

Lowest Volume **Highest Volume**
Nov 24, 2017 **Jun 9, 2017**
180,751,998 **3,692,928,083**

BL Quintile Band M1
Volume Cut-Offs

Weak | Up To - 428,050,796
Moderate | Up To - 513,349,595
Median | Up To - 644,871,154
Strong | Up To - 913,483,991
Peak | Up To - 3,692,928,083

△_RL_M2 Reaction **1 Year**

Newest Active Dec 29, 2017
Close Price % Change
2.024% = 4.84

Strong ▼

Consecutive Days Strong ▼ = 1 (no direction) Strong = 1

Lowest % Change **Highest % Change**
Jan 13, 2017 **May 10, 2017**
0.000% **17.899%**

RL Quintile Band M2
Close Price % Change Cut-Offs

Weak | Up To - 0.3968%
Moderate | Up To - 0.9311%
Median | Up To - 1.5625%
Strong | Up To - 2.6157%
Peak | Up To - 17.8988%

○_BL_M1 Baseline & **△_RL_M2 Reaction** **Newest Historical Activity** **1 Year**

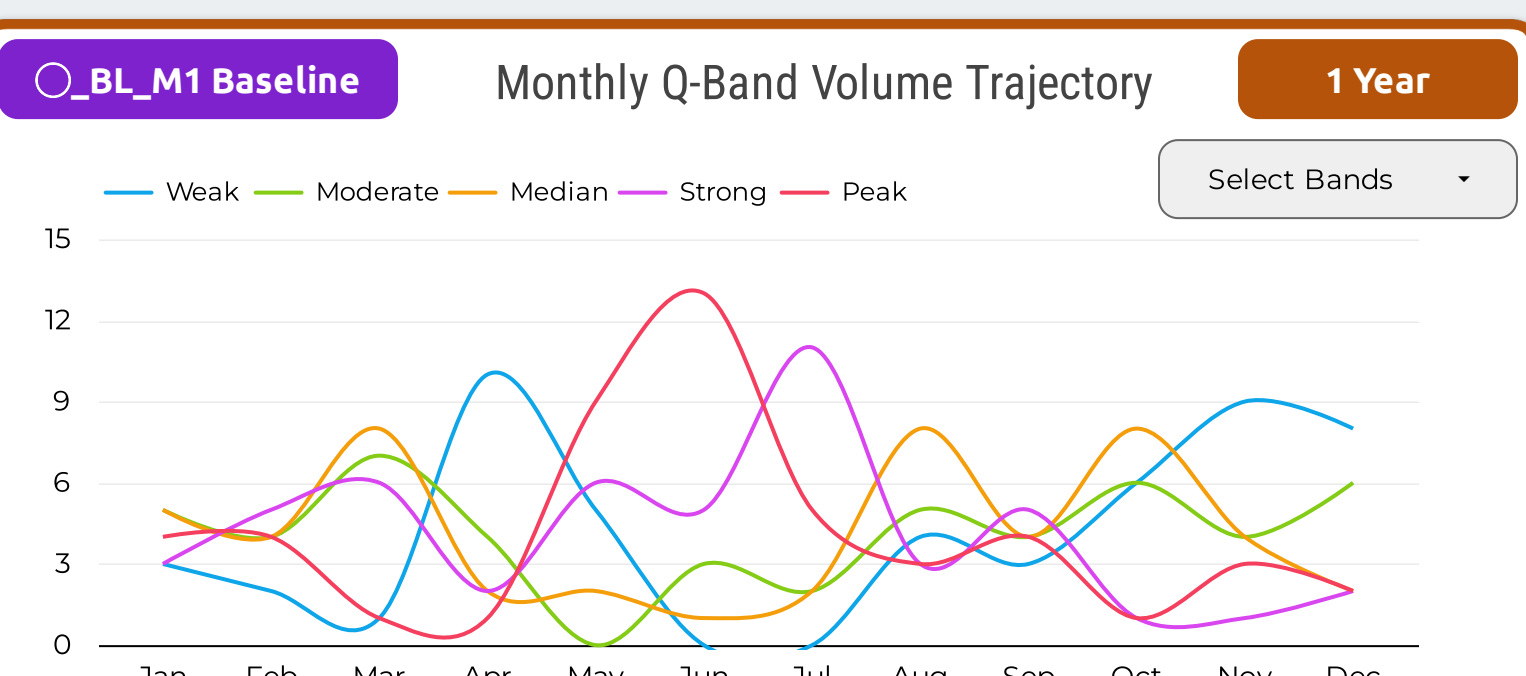
Local History: Q-Bands Volume & Close Price % Change

Date	○_BL_M1	Position	△_RL_M2
Dec 29, 2017	Weak	First Active Date	Strong ▼
Dec 28, 2017	Weak	2nd Active Date	Weak ▲
Dec 27, 2017	Weak	3rd	Weak ▼
Dec 26, 2017	Weak	4th	Median ▲
Dec 22, 2017	Moderate	5th	Moderate ▼
Dec 21, 2017	Weak	6th	Moderate ▼
Dec 20, 2017	Weak	7th	Moderate ▲
Dec 19, 2017	Weak	8th	Median ▼
Dec 18, 2017	Moderate	9th	Peak ▲
Dec 15, 2017	Strong	10th	Peak ▲

Peak List	Date_○_BL...
1	Dec 5, 2017
2	Dec 4, 2017
3	Nov 29, 2017
4	Nov 10, 2017
5	Nov 9, 2017
6	Oct 10, 2017
7	Sep 26, 2017
8	Sep 21, 2017
9	Sep 18, 2017
10	Sep 15, 2017

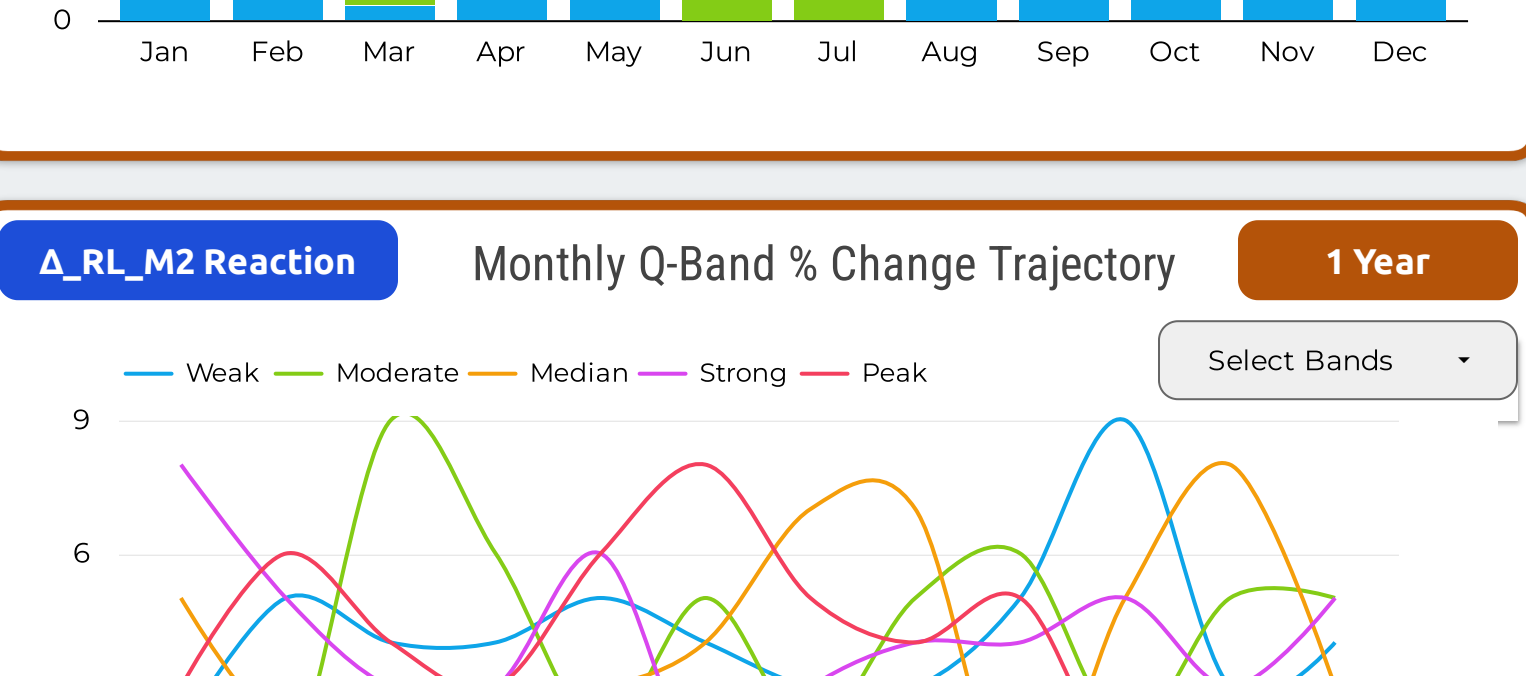
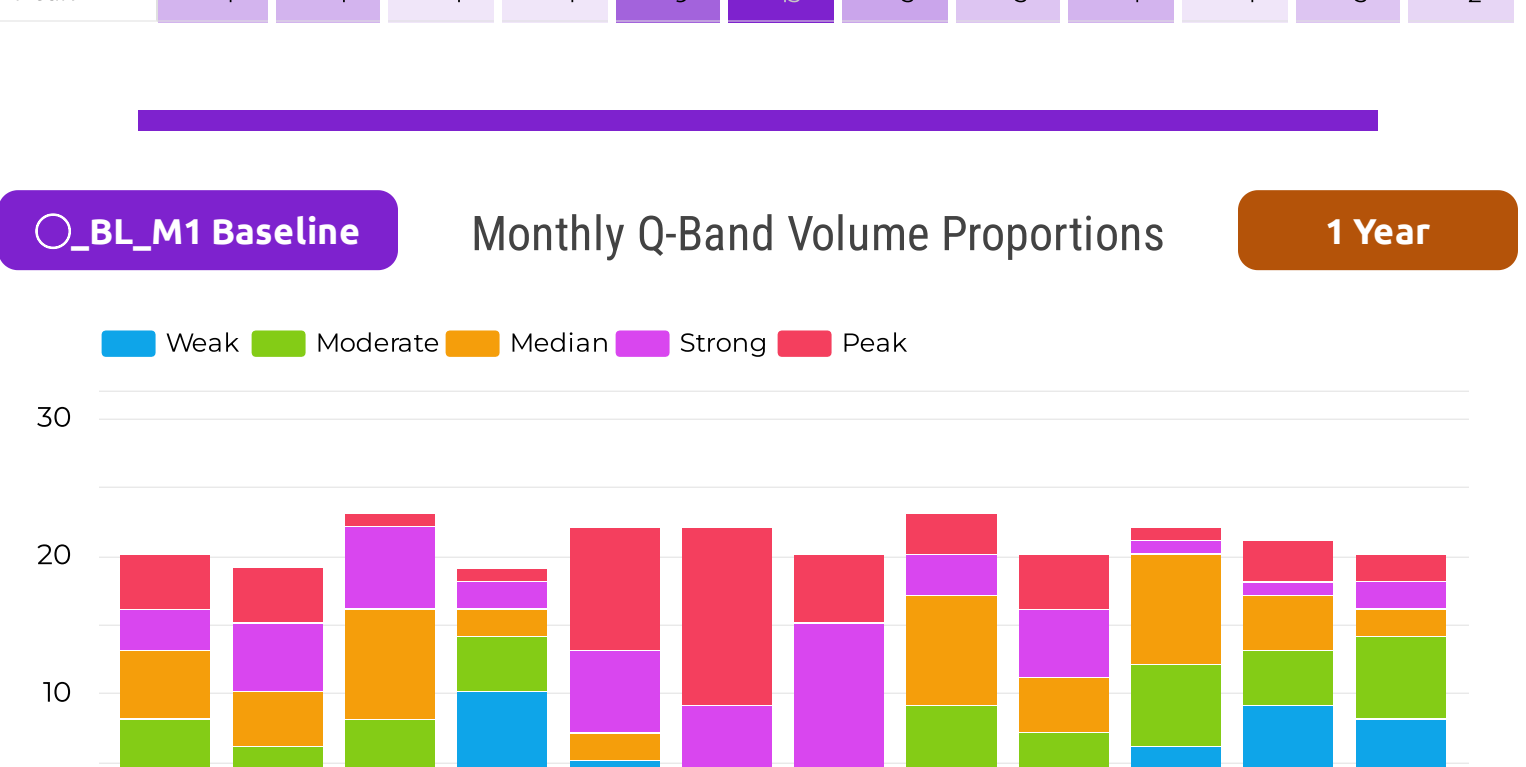
Peak List	Date_△_RL...
1	Dec 18, 2017
2	Dec 15, 2017
3	Dec 4, 2017
4	Nov 29, 2017
5	Nov 10, 2017
6	Oct 27, 2017
7	Sep 25, 2017
8	Sep 21, 2017
9	Sep 18, 2017
10	Sep 15, 2017

Monthly / Seasonal Analysis Section - Volume M1 & Close Price % Change M2



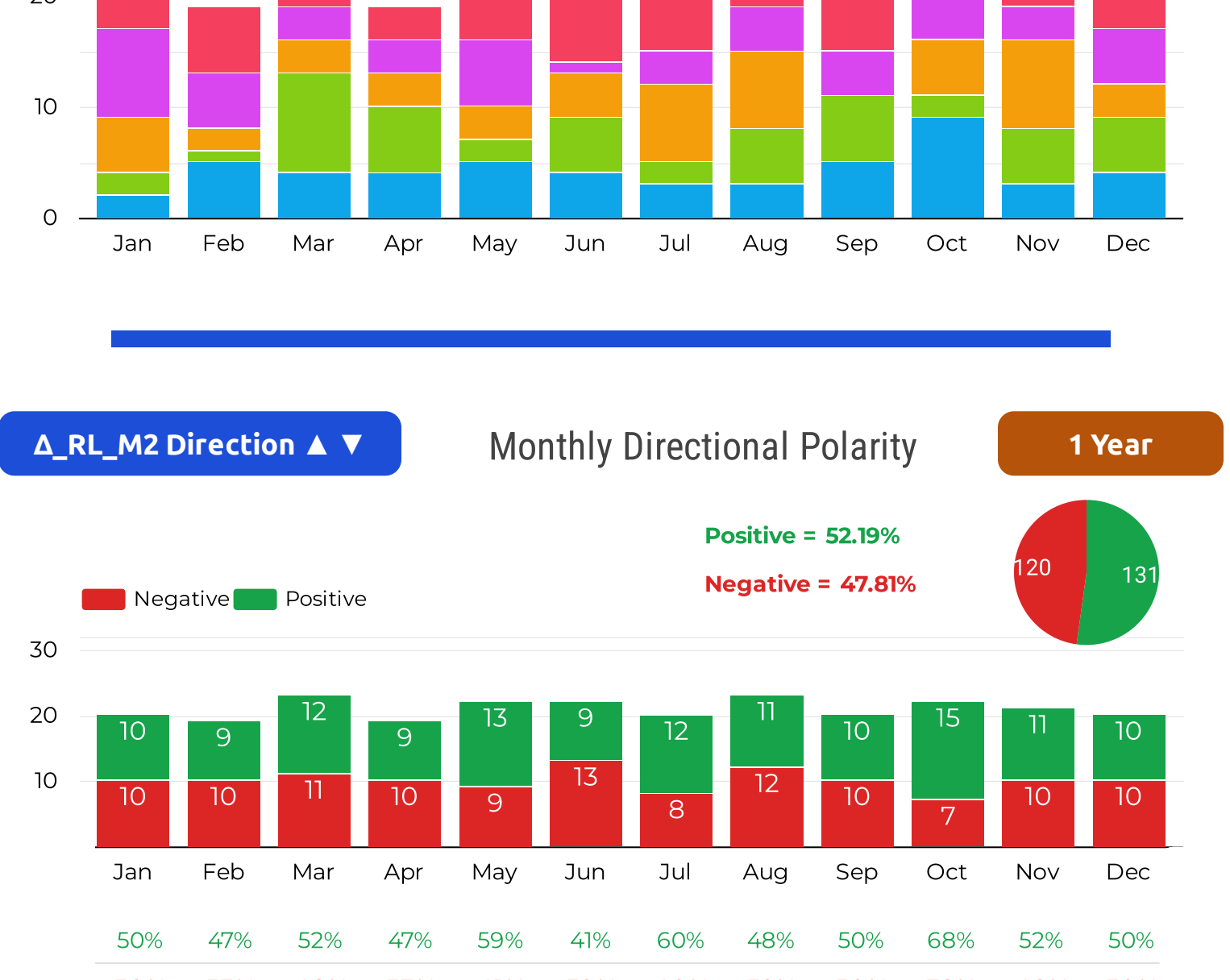
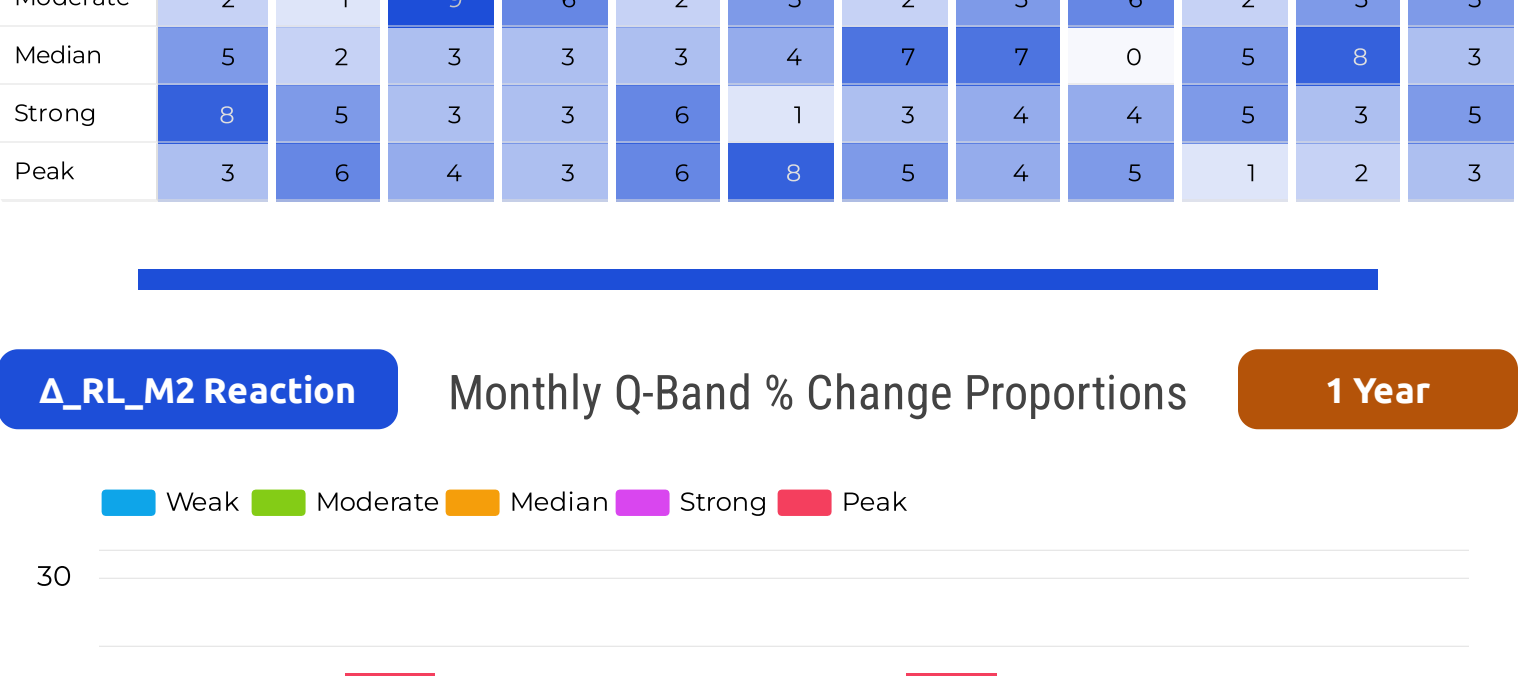
○_BL_M1 Baseline **Monthly Q-Band Volume Dispersion** **1 Year**

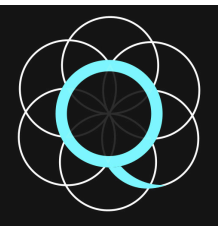
	Jan	Feb	Mar	Apr	May	Jun	Jul	Aug	Sep	Oct	Nov	Dec
Weak	3	2	1	10	5	0	0	4	3	6	9	8
Moderate	5	4	7	4	0	3	2	5	4	6	4	6
Median	5	4	8	2	2	1	2	8	4	8	4	2
Strong	3	5	6	2	6	5	11	3	5	1	1	2
Peak	4	4	1	1	9	13	5	3	4	1	3	2



△_RL_M2 Reaction **Monthly Q-Band % Change Dispersion** **1 Year**

	Jan	Feb	Mar	Apr	May	Jun	Jul	Aug	Sep	Oct	Nov	Dec
Weak	2	5	4	4	5	4	3	3	5	9	3	4
Moderate	2	1	9	6	2	5	2	5	6	2	5	5
Median	5	2	3	3	3	4	7	7	0	5	8	3
Strong	8	5	3	3	6	1	3	4	4	5	3	5
Peak	3	6	4	3	6	8	5	4	5	1	2	3





Quintile Analysis Engine Report

[QAE Guide / Contact](#)

By Simon Hobbs



System Fundamentals

www.system-fundamentals.com

Minimal guide provided below
→ See 'QAE Guide' for more details[Terms & Conditions](#)[Privacy Policy](#)

The **QAE Product** transforms 2 sets of cardinal daily metrics into ordinal **Q-Bands**, ranking and counting them across **Fixed Timeframes** using **Reverse Chronology**. The dataset is a closed 365/366-day historical envelope anchored to **Newest Date**. QAE processes 2 metric sets through 2 independent lenses: **M1 Baseline (BL)** and **M2 Reaction (RL)**. QAE is strictly historical making yesterday the newest allowable date.

Metric 1 - M1 → Baseline Lens **○_BL =** Ranked by absolute state within the Complete One-Year Range

Metric 2 - M2 → Reaction Lens **△_RL =** Reshaped to Reaction Intensity from Prior State then Ranked abs 1yr range

Border colors indicate timeframes

1 Month **3 Months** **6 Months**

1 Year **Distant 6M**

All containers show identification badges for timeframes plus lens type with metric identity

Reserved space: Automated system status and integration details

QAE - Quintile Analysis Engine
SEASONAL BACK-STITC PAGE
* Stock Market Skin *

REPORT TITLE: nVidia / NVDA / 2018 / NY / Metric 1 Volume / Metric 2 Close Price USD / EDT UTC -4hrs

NVIDIA

Newest: Dec 31, 2018
Oldest: Jan 1, 2018
Newest Active Date: Dec 31, 2018

UTC-04:00 Atlantic Canada / Venezuela

QAE Timestamp: 2026-05-15 | 19:12:26

Day Count: 365 | Active Days: 251 | Participation: 68.77%

○_BL_M1 Baseline **1 Year**

Newest Active Dec 31, 2018
Volume
465,139,995
Median

Consecutive Days (no direction) Median = 1

Lowest Volume **Highest Volume**
Jul 16, 2018 **Nov 16, 2018**
197,037,038 **1,963,519,180**

BL Quintile Band M1
Volume Cut-Offs

Weak | Up To - 350,791,036
Moderate | Up To - 432,259,596
Median | Up To - 553,828,434
Strong | Up To - 702,347,553
Peak | Up To - 1,963,519,180

△_RL_M2 Reaction **1 Year**

Newest Active Dec 31, 2018
Close Price % Change
0.000% = 3.34

Weak ▼

Consecutive Days Weak ▼ = 1 (no direction) Weak = 1

Lowest % Change **Highest % Change**
Jan 9, 2018 **Nov 16, 2018**
0.000% **18.775%**

RL Quintile Band M2
Close Price % Change Cut-Offs

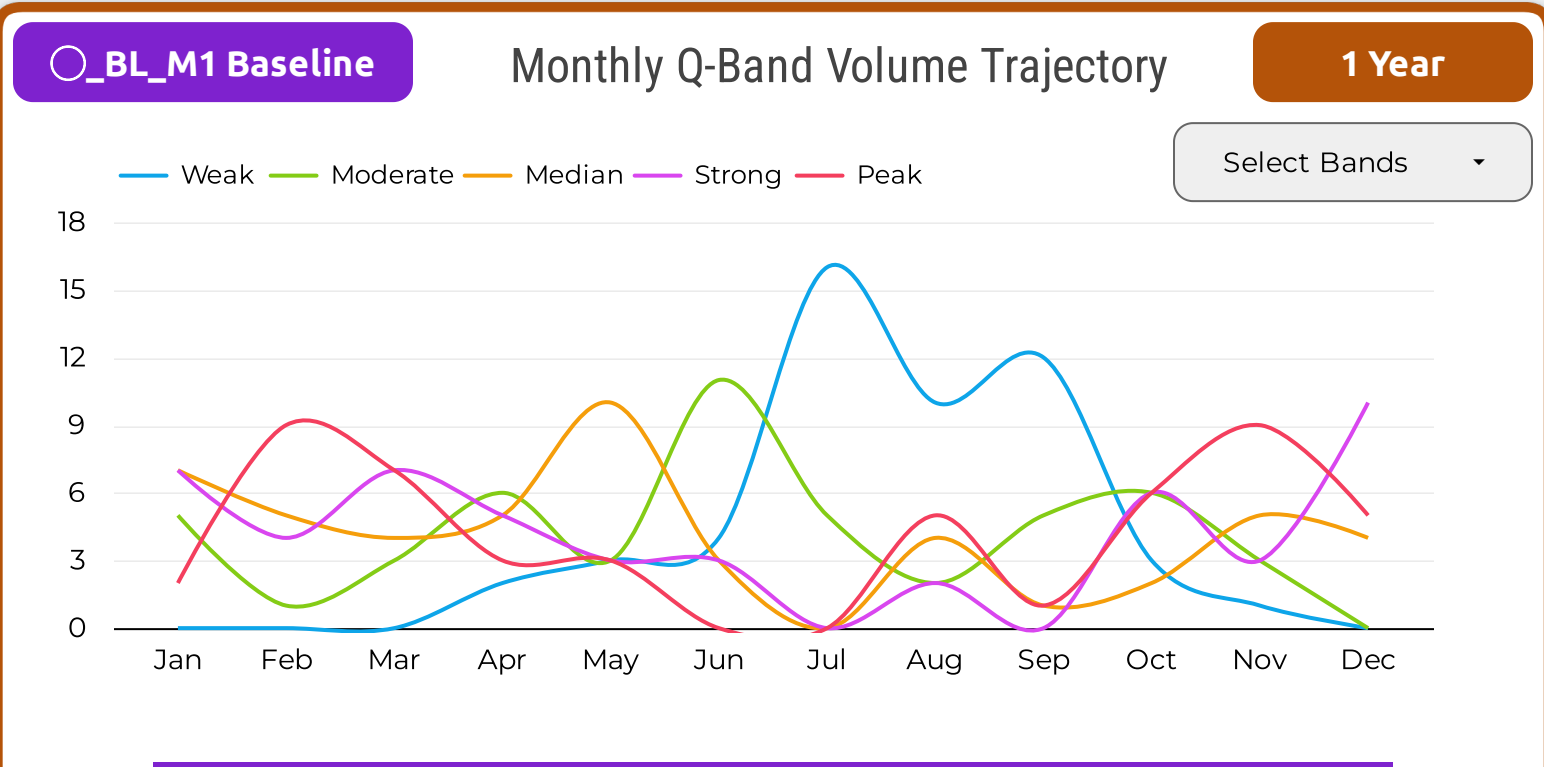
Weak | Up To - 0.5357%
Moderate | Up To - 1.1111%
Median | Up To - 1.9868%
Strong | Up To - 3.4156%
Peak | Up To - 18.7747%

○_BL_M1 Baseline & **△_RL_M2 Reaction** **Newest Historical Activity** **1 Year**

Local History: Q-Bands Volume & Close Price % Change | Peak - Volume M1 | Peak - Price % Change M2

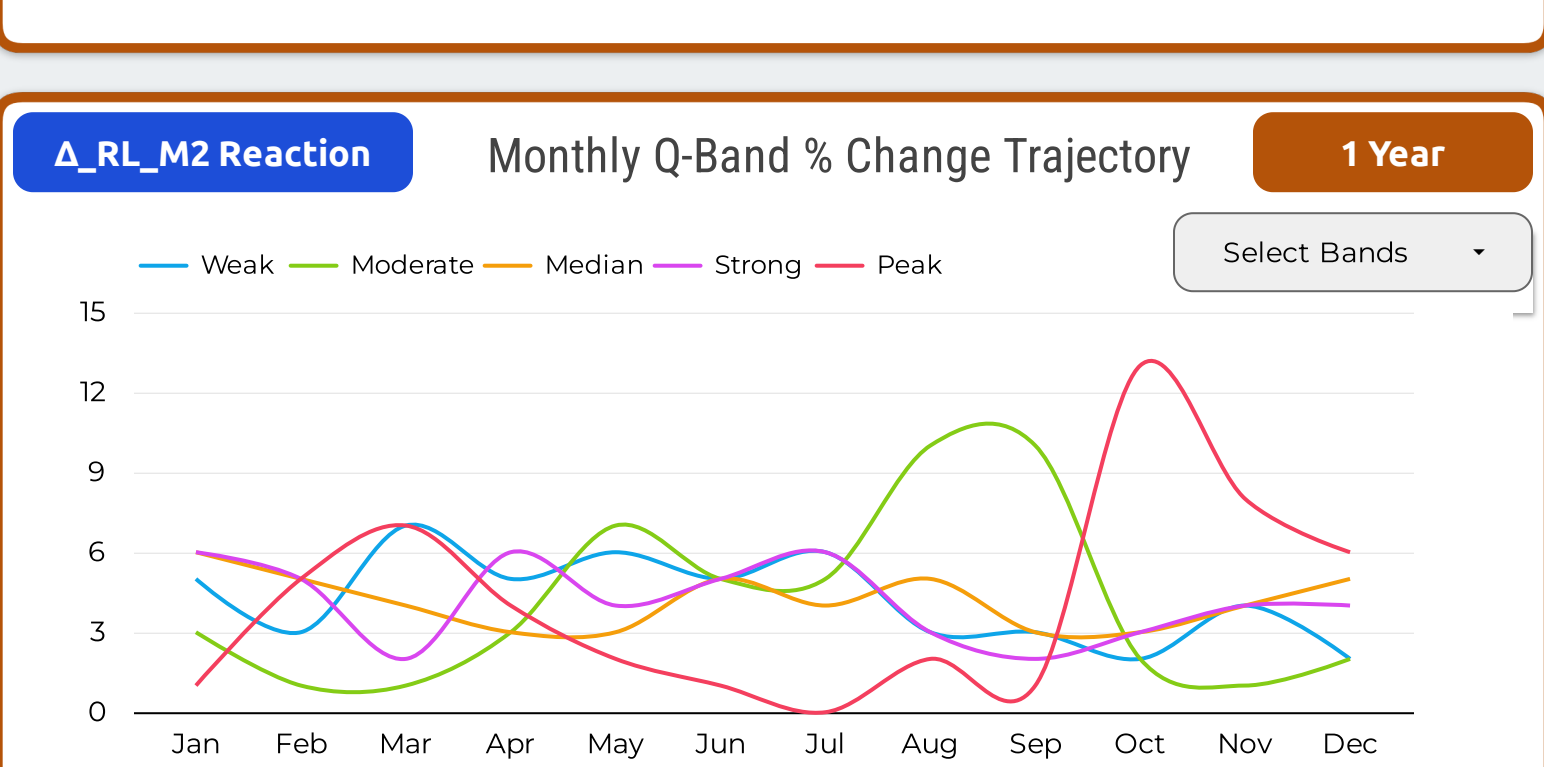
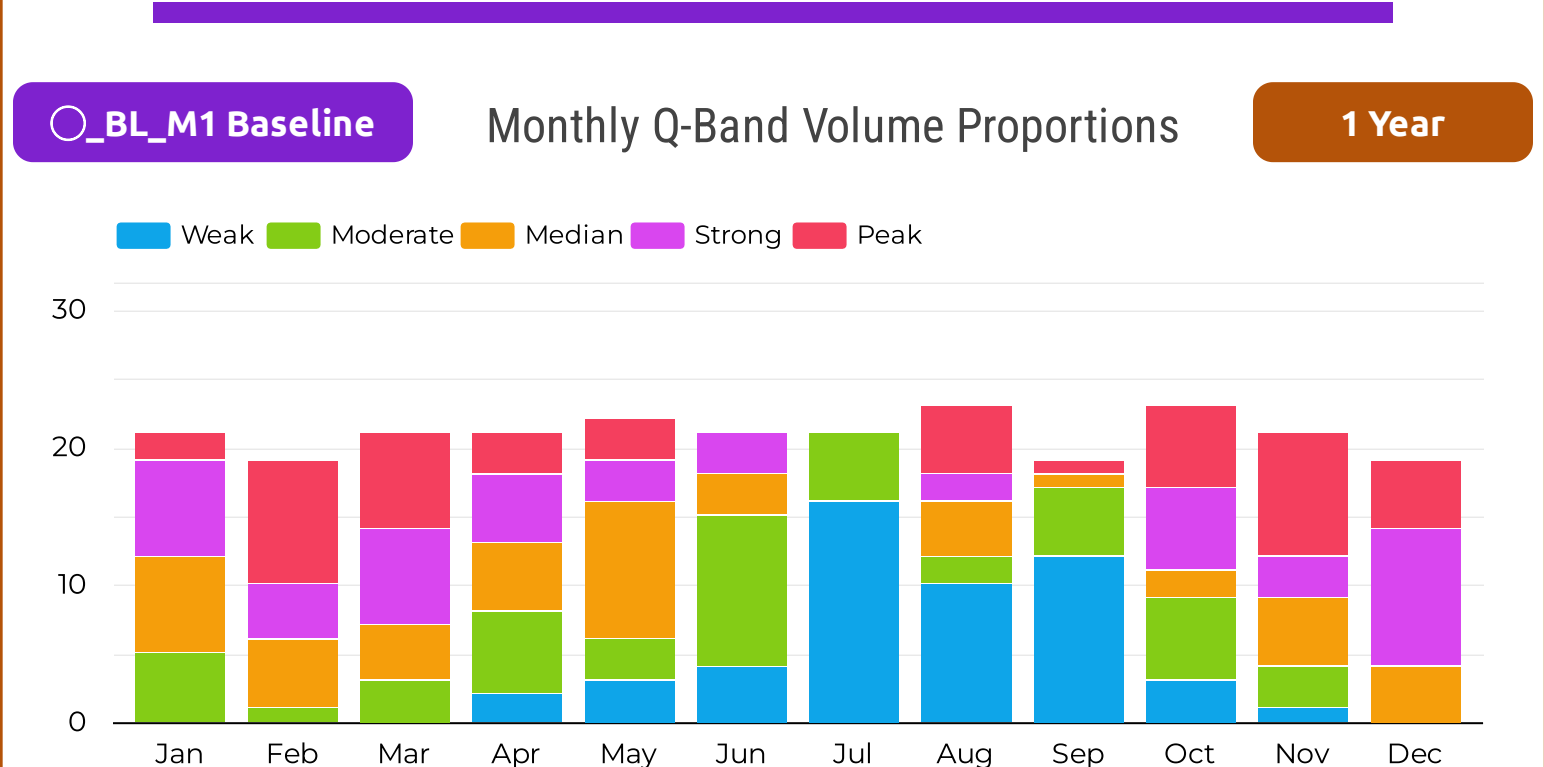
Date	○_BL_M1	Position	△_RL_M2	Peak List	Date_○_BL...	Peak List	Date_△_RL...
Dec 31, 2018	Median	First Active Date	Weak ▼	1	Dec 21, 2018	1	Dec 26, 2018
Dec 28, 2018	Strong	2nd Active Date	Median ▲	2	Dec 20, 2018	2	Dec 21, 2018
Dec 27, 2018	Strong	3rd	Median ▼	3	Dec 19, 2018	3	Dec 19, 2018
Dec 26, 2018	Strong	4th	Peak ▲	4	Dec 4, 2018	4	Dec 7, 2018
Dec 24, 2018	Median	5th	Median ▼	5	Dec 3, 2018	5	Dec 4, 2018
Dec 21, 2018	Peak	6th	Peak ▼	6	Nov 30, 2018	6	Dec 3, 2018
Dec 20, 2018	Peak	7th	Strong ▼	7	Nov 28, 2018	7	Nov 30, 2018
Dec 19, 2018	Peak	8th	Peak ▼	8	Nov 27, 2018	8	Nov 28, 2018
Dec 18, 2018	Strong	9th	Strong ▲	9	Nov 26, 2018	9	Nov 26, 2018
Dec 17, 2018	Strong	10th	Median ▼	10	Nov 21, 2018	10	Nov 19, 2018

Monthly / Seasonal Analysis Section - Volume M1 & Close Price % Change M2



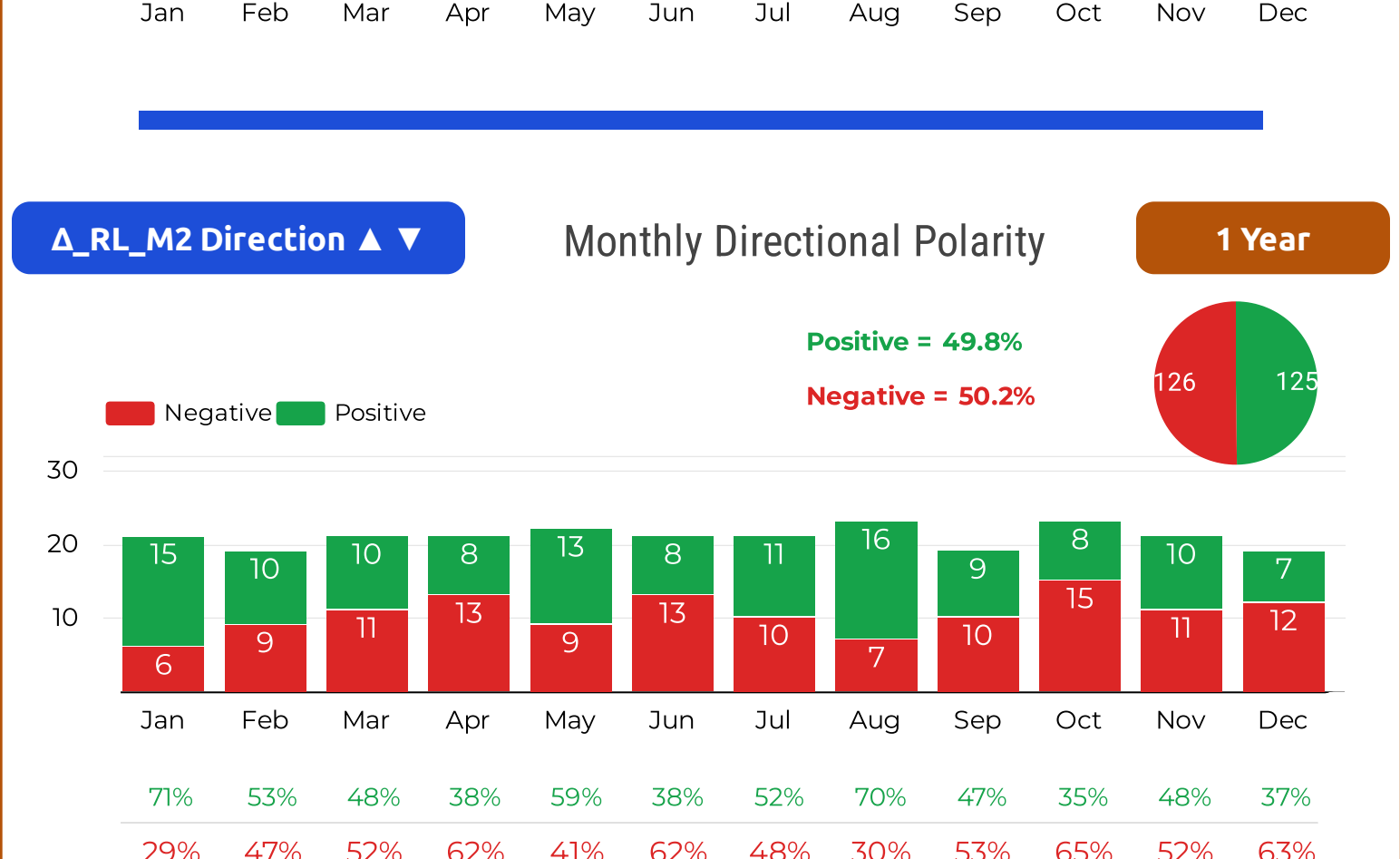
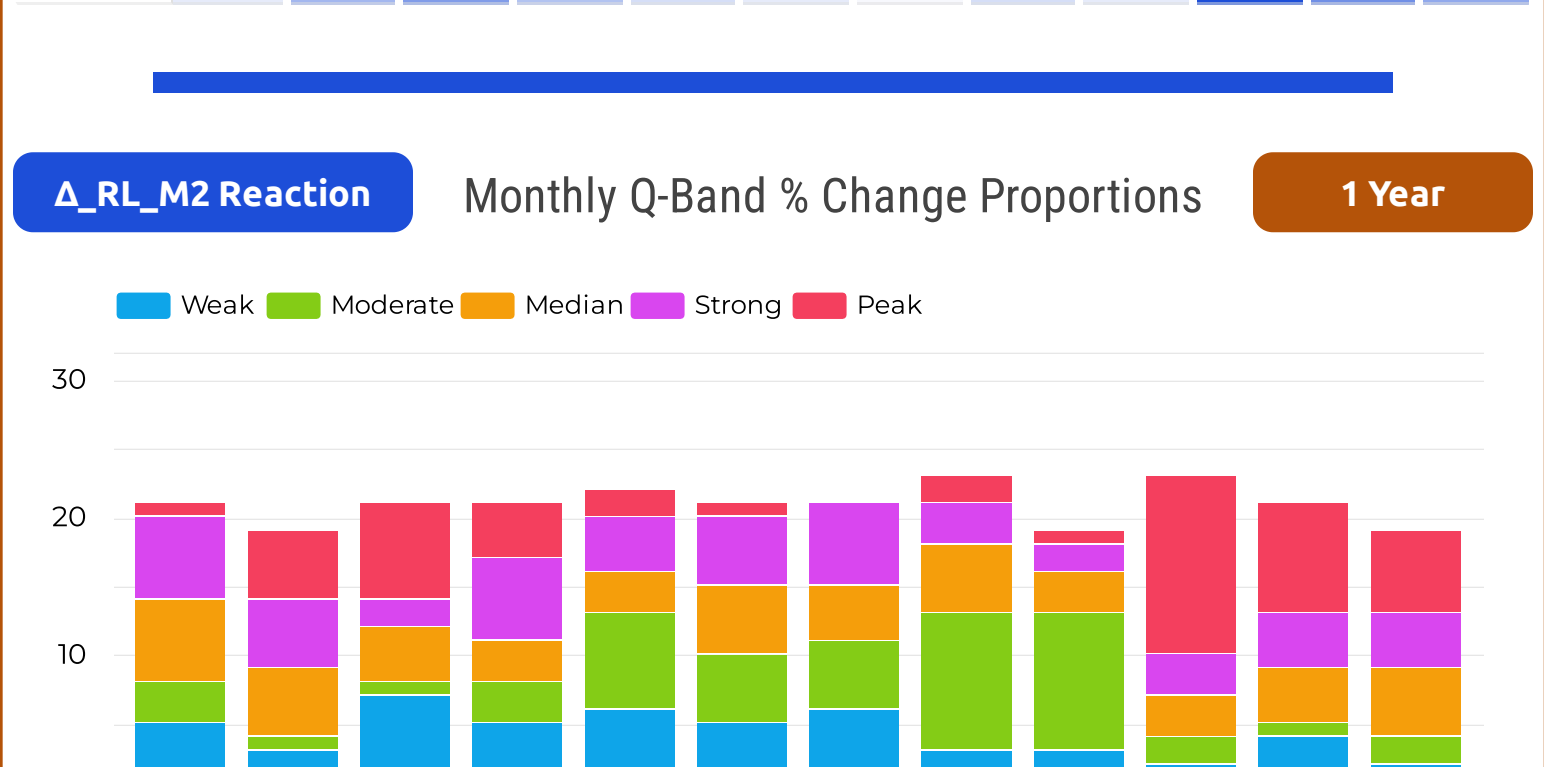
○_BL_M1 Baseline **Monthly Q-Band Volume Dispersion** **1 Year**

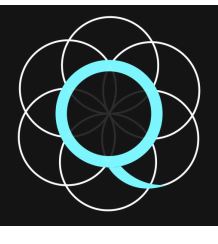
	Jan	Feb	Mar	Apr	May	Jun	Jul	Aug	Sep	Oct	Nov	Dec
Weak	0	0	0	2	3	4	16	10	12	3	1	0
Moderate	5	1	3	6	3	11	5	2	5	6	3	0
Median	7	5	4	5	10	3	0	4	1	2	5	4
Strong	7	4	7	5	3	3	0	2	0	6	3	10
Peak	2	9	7	3	3	0	0	5	1	6	9	5



△_RL_M2 Reaction **Monthly Q-Band % Change Dispersion** **1 Year**

	Jan	Feb	Mar	Apr	May	Jun	Jul	Aug	Sep	Oct	Nov	Dec
Weak	5	3	7	5	6	5	6	3	3	2	4	2
Moderate	3	1	1	3	7	5	5	10	10	2	1	2
Median	6	5	4	3	3	5	4	5	3	3	4	5
Strong	6	5	2	6	4	5	6	3	2	3	4	4
Peak	1	5	7	4	2	1	0	2	1	13	8	6





Quintile Analysis Engine Report

[QAE Guide / Contact](#)

By Simon Hobbs



System Fundamentals

www.system-fundamentals.com

Minimal guide provided below
→ See 'QAE Guide' for more details[Terms & Conditions](#)[Privacy Policy](#)

The **QAE Product** transforms 2 sets of cardinal daily metrics into ordinal **Q-Bands**, ranking and counting them across **Fixed Timeframes** using **Reverse Chronology**. The dataset is a closed 365/366-day historical envelope anchored to **Newest Date**. QAE processes 2 metric sets through 2 independent lenses: **M1 Baseline (BL)** and **M2 Reaction (RL)**. QAE is strictly historical making yesterday the newest allowable date.

Metric 1 - M1 → Baseline Lens **○_BL =** Ranked by absolute state within the Complete One-Year Range

Metric 2 - M2 → Reaction Lens **△_RL =** Reshaped to Reaction Intensity from Prior State then Ranked abs 1yr range

Border colors indicate timeframes

1 Month **3 Months** **6 Months**

1 Year **Distant 6M**

All containers show identification badges for timeframes plus lens type with metric identity

Reserved space: Automated system status and integration details

QAE - Quintile Analysis Engine
SEASONAL BACK-STITC PAGE
* Stock Market Skin *

REPORT TITLE: nVidia / NVDA / 2019 / NY / Metric 1 Volume / Metric 2 Close Price USD / EDT UTC -4hrs

NVIDIA

Newest: Dec 31, 2019
Oldest: Jan 1, 2019
Newest Active Date: Dec 31, 2019

UTC-04:00 Atlantic Canada / Venezuela

QAE Timestamp: 2026-05-14 | 08:57:39

Day Count: 365 | Active Days: 252 | Participation: 69.04%

○_BL_M1 Baseline **1 Year**

Newest Active Dec 31, 2019
Volume
231,211,318

Weak

Consecutive Days (no direction) Weak = 5

Lowest Volume **Highest Volume**
Dec 24, 2019 **May 3, 2019**
138,863,879 **2,511,526,695**

BL Quintile Band M1
Volume Cut-Offs

Weak | Up To - 295,831,565
Moderate | Up To - 362,922,860
Median | Up To - 449,024,396
Strong | Up To - 583,642,194
Peak | Up To - 2,511,526,695

△_RL_M2 Reaction **1 Year**

Newest Active Dec 31, 2019
Close Price % Change
1.205% = 5.88

Median ▲

Consecutive Days Median ▲ = 1 (no direction) Median = 1

Lowest % Change **Highest % Change**
May 3, 2019 **Jan 28, 2019**
0.000% **13.750%**

RL Quintile Band M2
Close Price % Change Cut-Offs

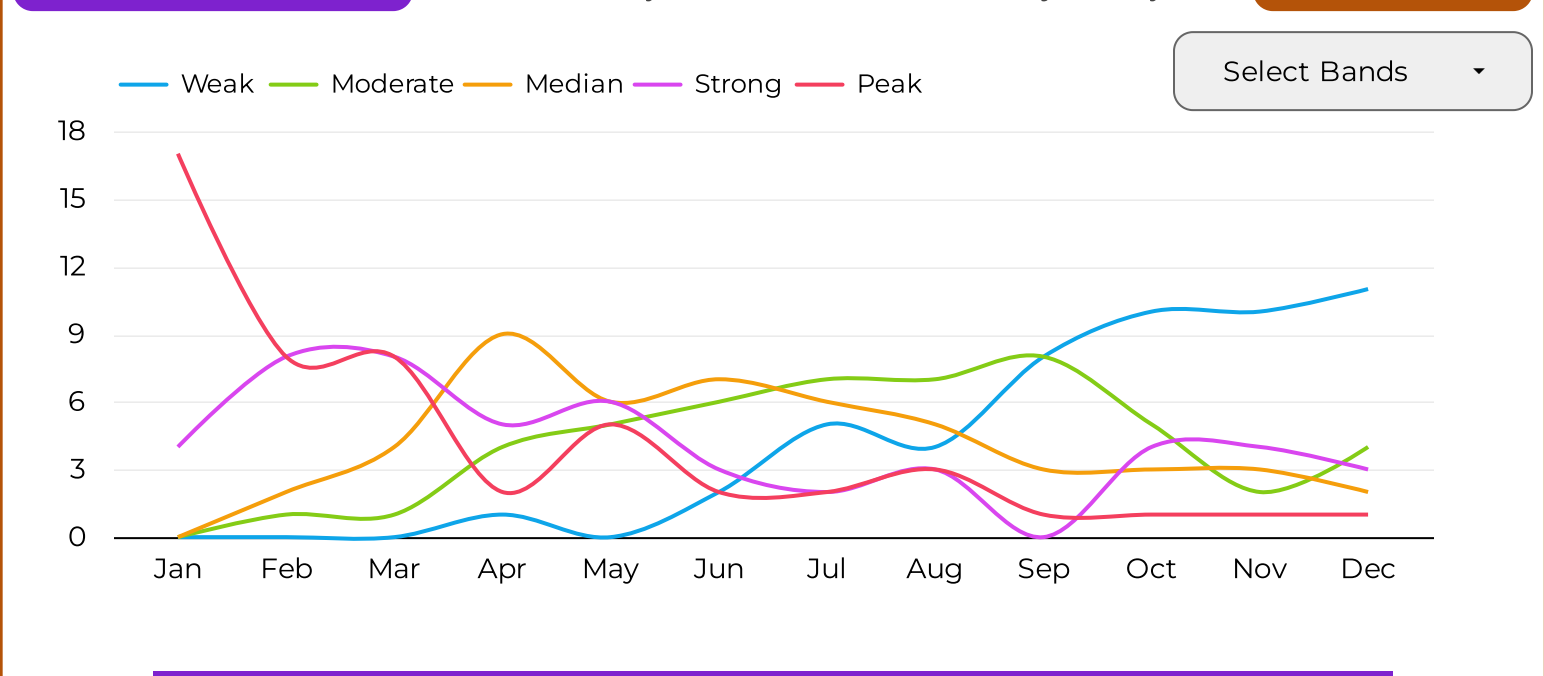
Weak | Up To - 0.4602%
Moderate | Up To - 1.0593%
Median | Up To - 1.7798%
Strong | Up To - 2.9147%
Peak | Up To - 13.7500%

○_BL_M1 Baseline & **△_RL_M2 Reaction** **Newest Historical Activity** **1 Year**

Local History: Q-Bands Volume & Close Price % Change | Peak - Volume M1 | Peak - Price % Change M2

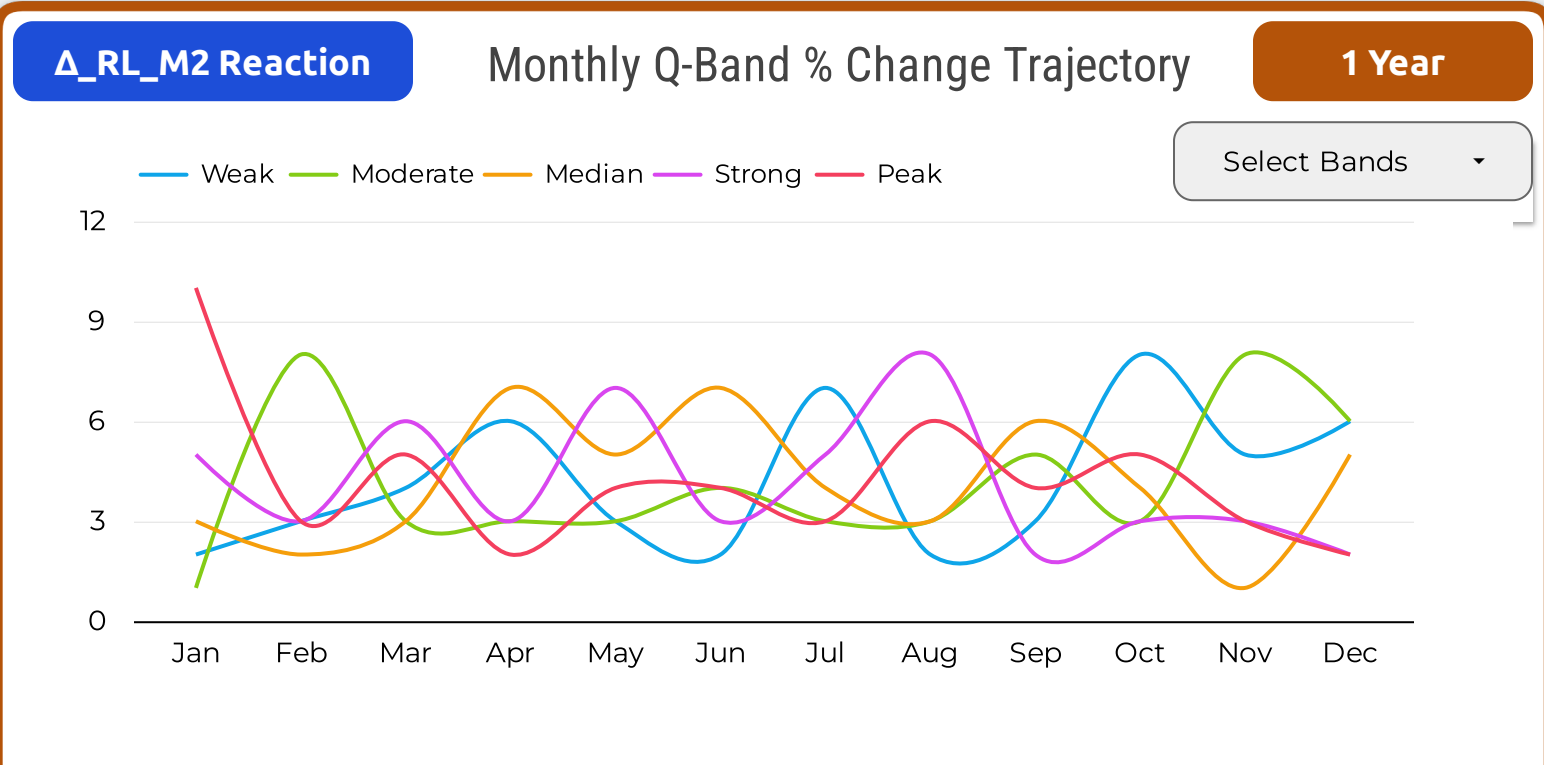
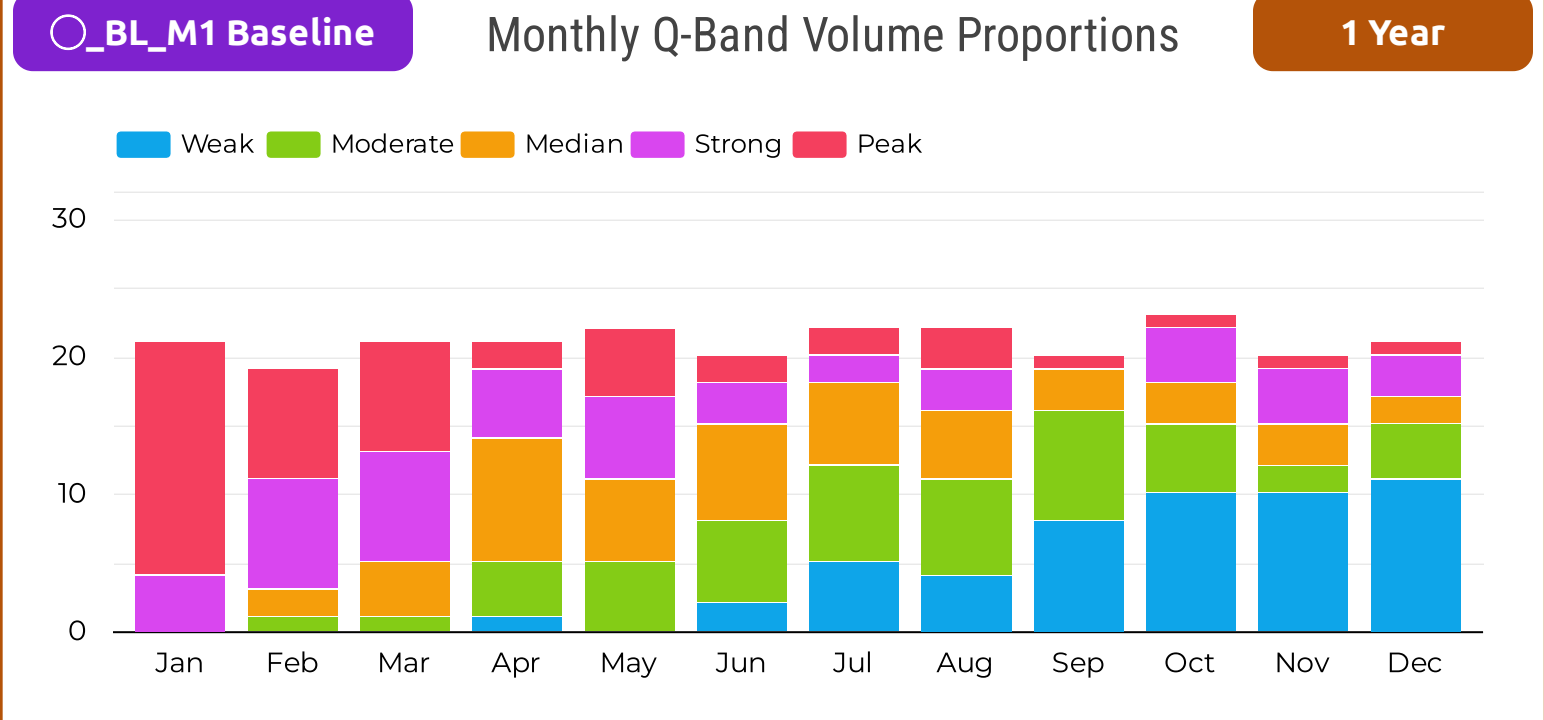
Date	○_BL_M1	Position	△_RL_M2	Peak List	Date_○_BL...	Peak List	Date_△_RL...
Dec 31, 2019	Weak	First Active Date	Median ▲	1	Dec 20, 2019	1	Dec 12, 2019
Dec 30, 2019	Weak	2nd Active Date	Strong ▼	2	Nov 15, 2019	2	Dec 2, 2019
Dec 27, 2019	Weak	3rd	Moderate ▼	3	Oct 15, 2019	3	Nov 25, 2019
Dec 26, 2019	Weak	4th	Weak ▲	4	Sep 5, 2019	4	Nov 18, 2019
Dec 24, 2019	Weak	5th	Weak ▼	5	Aug 19, 2019	5	Nov 4, 2019
Dec 23, 2019	Moderate	6th	Weak ▼	6	Aug 16, 2019	6	Oct 25, 2019
Dec 20, 2019	Peak	7th	Median ▲	7	Aug 5, 2019	7	Oct 21, 2019
Dec 19, 2019	Strong	8th	Strong ▲	8	Jul 11, 2019	8	Oct 15, 2019
Dec 18, 2019	Moderate	9th	Moderate ▲	9	Jul 1, 2019	9	Oct 8, 2019
Dec 17, 2019	Moderate	10th	Median ▲	10	Jun 26, 2019	10	Oct 3, 2019

Monthly / Seasonal Analysis Section - Volume M1 & Close Price % Change M2



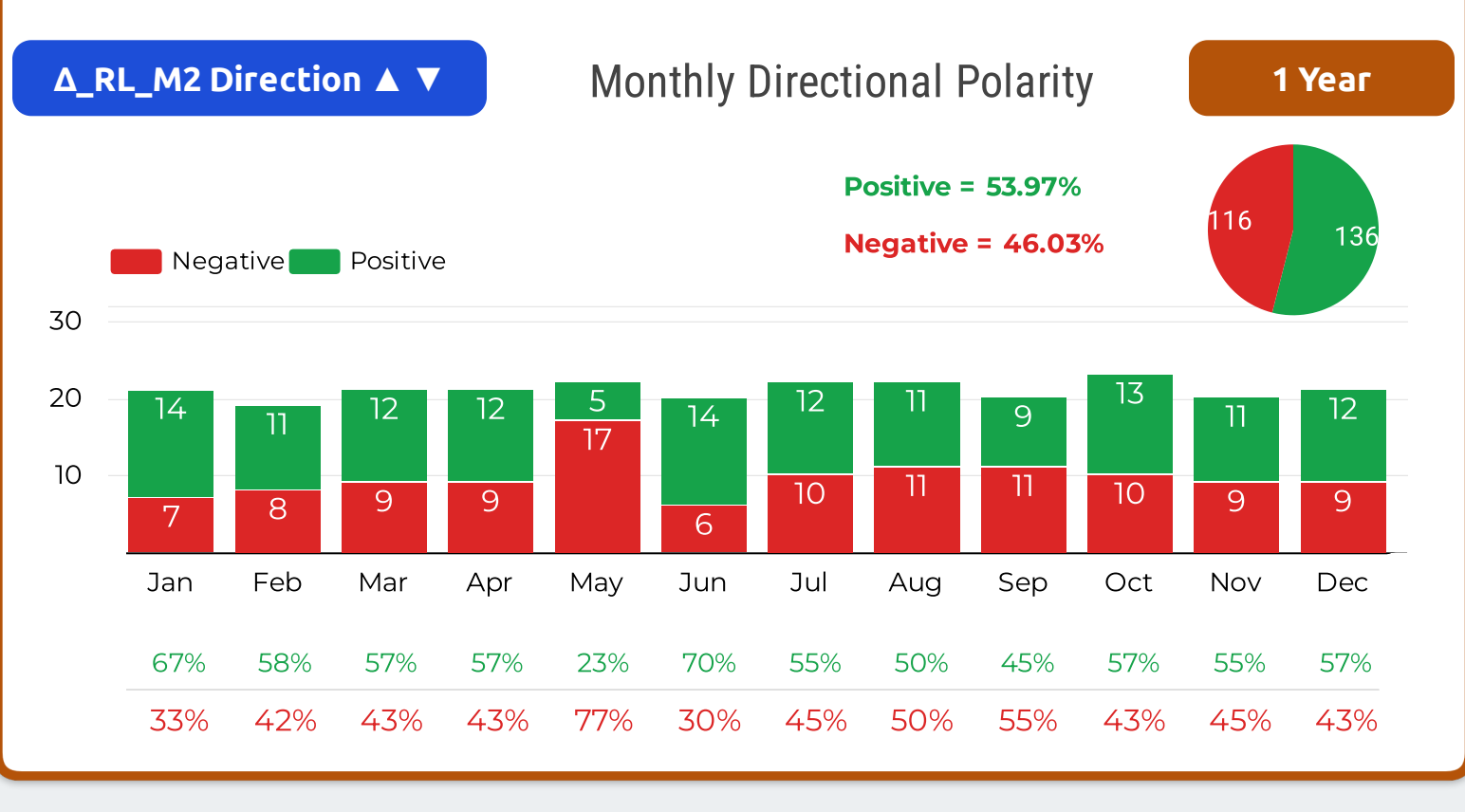
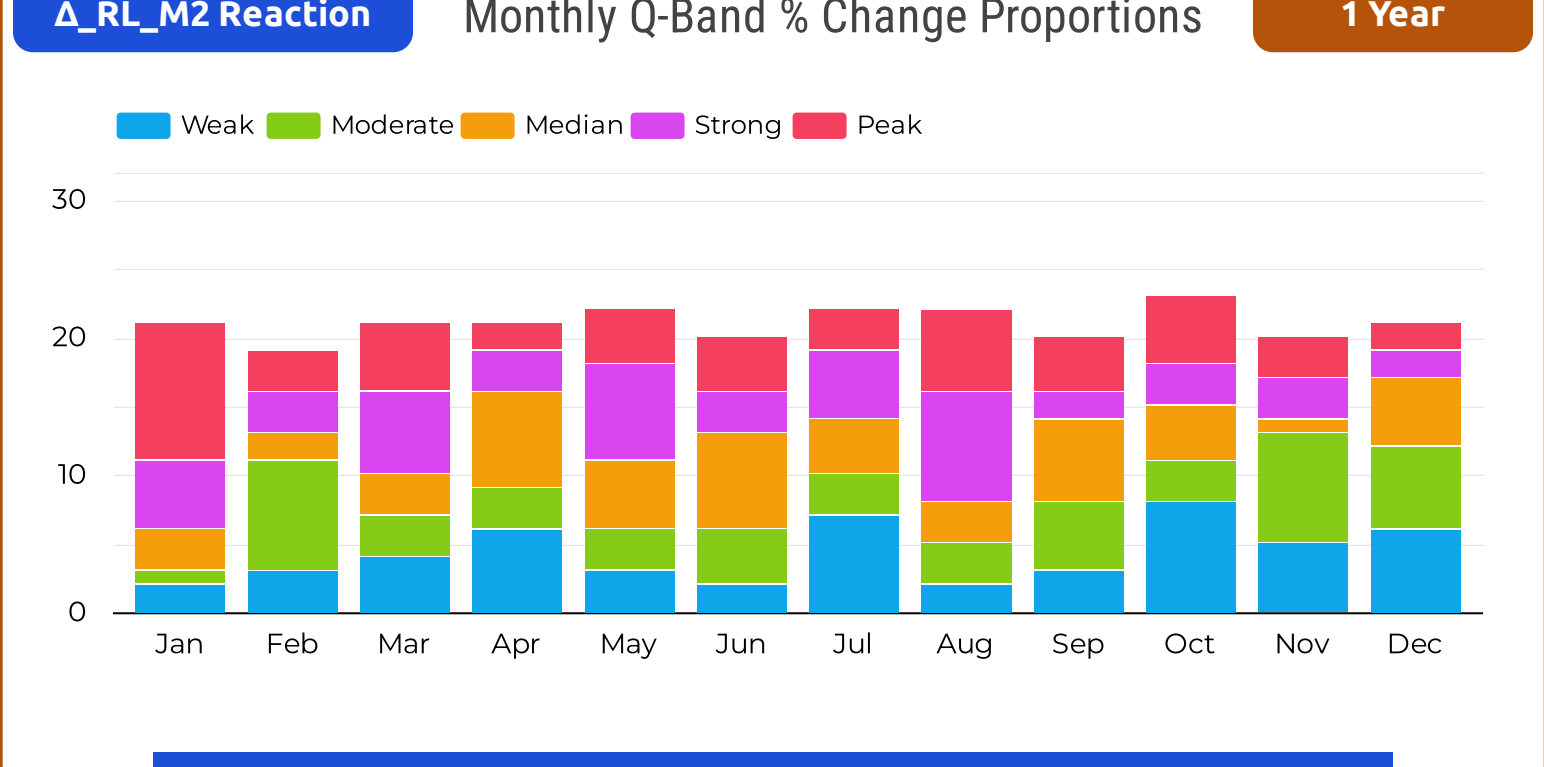
○_BL_M1 Baseline **Monthly Q-Band Volume Dispersion** **1 Year**

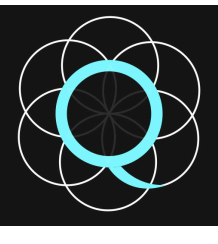
	Jan	Feb	Mar	Apr	May	Jun	Jul	Aug	Sep	Oct	Nov	Dec
Weak	0	0	0	1	0	2	5	4	8	10	10	11
Moderate	0	1	1	4	5	6	7	7	8	5	2	4
Median	0	2	4	9	6	7	6	5	3	3	3	2
Strong	4	8	8	5	6	3	2	3	0	4	4	3
Peak	17	8	8	2	5	2	2	3	1	1	1	1



△_RL_M2 Reaction **Monthly Q-Band % Change Dispersion** **1 Year**

	Jan	Feb	Mar	Apr	May	Jun	Jul	Aug	Sep	Oct	Nov	Dec
Weak	2	3	4	6	3	2	7	2	3	8	5	6
Moderate	1	8	3	3	3	4	3	3	5	3	8	6
Median	3	2	3	7	5	7	4	3	6	4	1	5
Strong	5	3	6	3	7	3	5	8	2	3	3	2
Peak	10	3	5	2	4	4	3	6	4	5	3	2





Quintile Analysis Engine Report

[QAE Guide / Contact](#)

By Simon Hobbs



System Fundamentals

www.system-fundamentals.comMinimal guide provided below
→ See 'QAE Guide' for more details[Terms & Conditions](#)[Privacy Policy](#)

The **QAE Product** transforms 2 sets of cardinal daily metrics into ordinal **Q-Bands**, ranking and counting them across **Fixed Timeframes** using **Reverse Chronology**. The dataset is a closed 365/366-day historical envelope anchored to **Newest Date**. QAE processes 2 metric sets through 2 independent lenses: **M1 Baseline (BL)** and **M2 Reaction (RL)**. QAE is strictly historical making yesterday the newest allowable date.

Metric 1 - M1 → Baseline Lens **○_BL =** Ranked by absolute state within the Complete One-Year Range

Metric 2 - M2 → Reaction Lens **△_RL =** Reshaped to Reaction Intensity from Prior State then Ranked abs 1yr range

All containers show identification badges for timeframes plus lens type with metric identity

Border colors indicate timeframes

1 Month

3 Months

6 Months

1 Year

Distant 6M

Reserved space: Automated system status and integration details

QAE - Quintile Analysis Engine
SEASONAL BACK-STITC PAGE
* Stock Market Skin *

REPORT TITLE: nVidia / NVDA / 2020 / NY / Metric 1 Volume / Metric 2 Close Price USD / EDT UTC -4hrs

Newest: Dec 31, 2020
Oldest: Jan 1, 2020
Newest Active Date: Dec 31, 2020

UTC-04:00 Atlantic Canada / Venezuela

QAE Timestamp: 2026-05-14 | 08:42:43

Day Count: 366 | Active Days: 253 | Participation: 69.13%

○_BL_M1 Baseline 1 Year

Newest Active Dec 31, 2020
Volume
192,424,398

Weak

Consecutive Days (no direction) Weak = 7

Lowest Volume Dec 24, 2020: 97,883,519
Highest Volume Sep 4, 2020: 1,463,682,785

BL Quintile Band M1 Volume Cut-Offs

- Weak | Up To - 284,318,077
- Moderate | Up To - 367,771,764
- Median | Up To - 495,172,715
- Strong | Up To - 660,693,721
- Peak | Up To - 1,463,682,785

△_RL_M2 Reaction 1 Year

Newest Active Dec 31, 2020
Close Price % Change
0.684% = 13.06

Weak ▼

Consecutive Days Weak ▼ = 1 (no direction) Weak = 1

Lowest % Change Jun 4, 2020: 0.000%
Highest % Change Mar 16, 2020: 18.439%

RL Quintile Band M2 Close Price % Change Cut-Offs

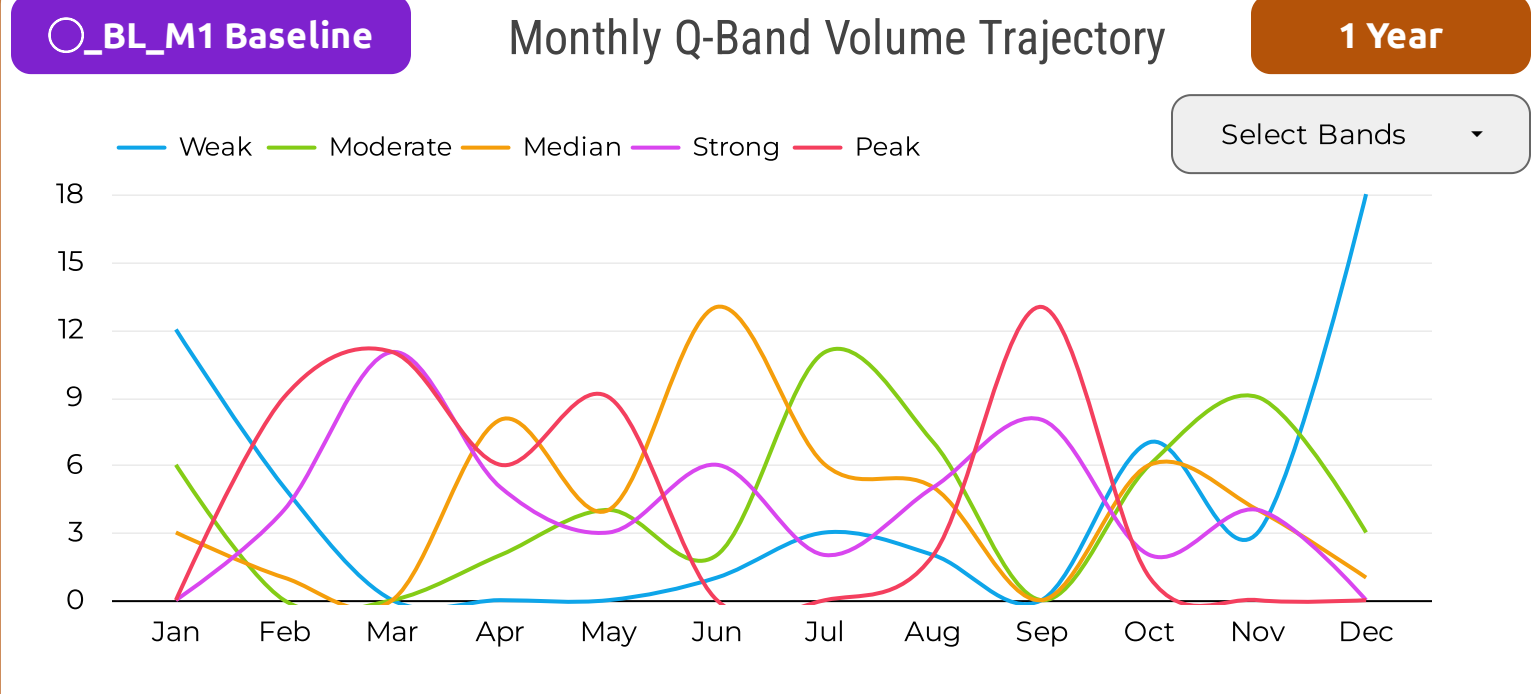
- Weak | Up To - 0.6849%
- Moderate | Up To - 1.4223%
- Median | Up To - 2.5156%
- Strong | Up To - 3.9714%
- Peak | Up To - 18.4385%

○_BL_M1 Baseline & **△_RL_M2 Reaction** Newest Historical Activity 1 Year

Local History: Q-Bands Volume & Close Price % Change | Peak - Volume M1 | Peak - Price % Change M2

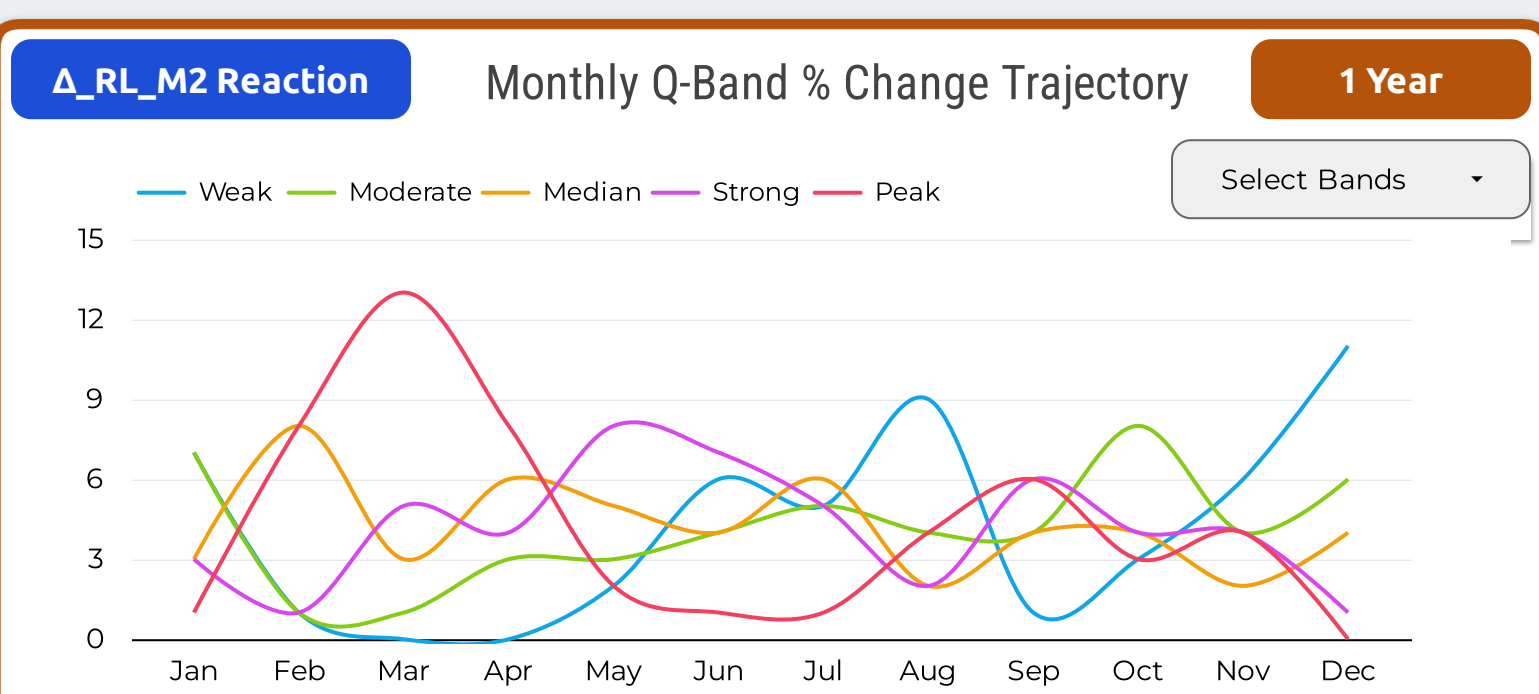
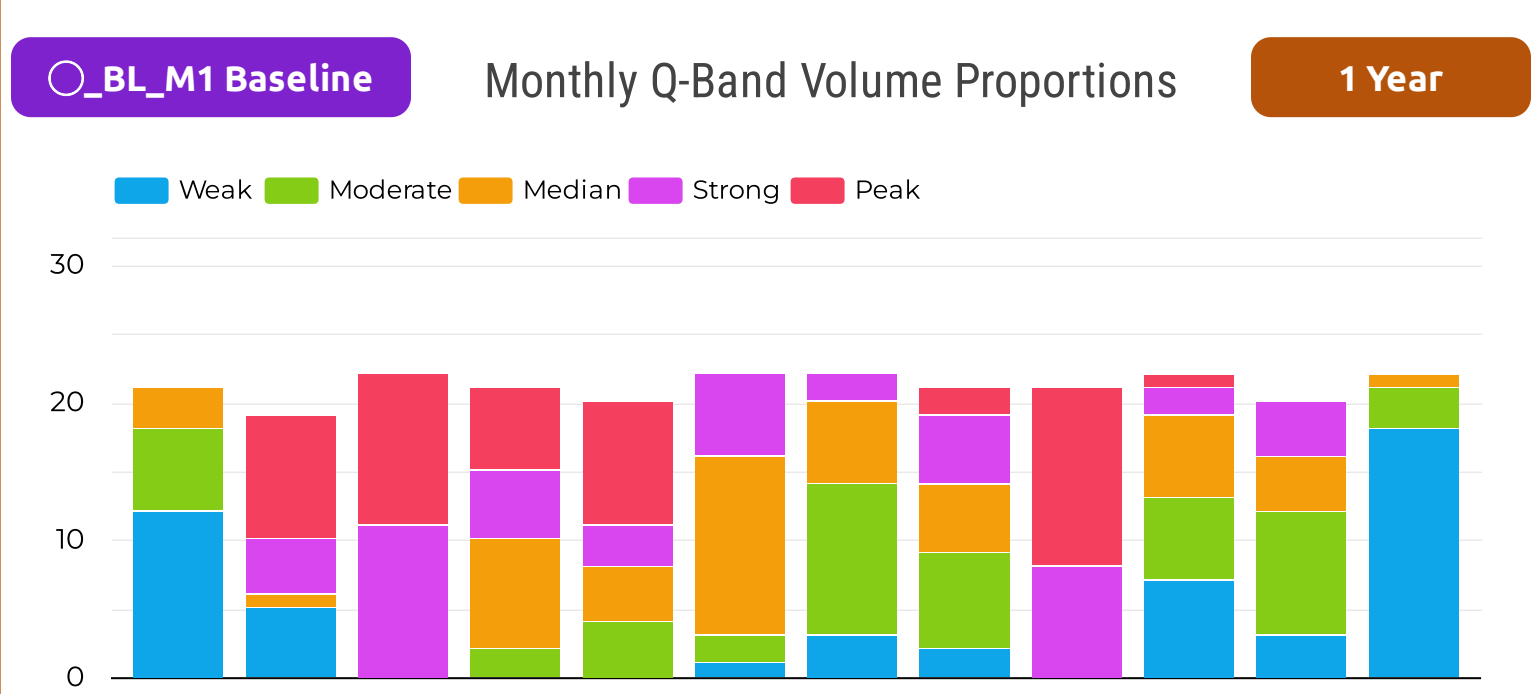
Date	○_BL_M1	Position	△_RL_M2	Peak List	Date_○_BL...	Peak List	Date_△_RL...
Dec 31, 2020	Weak	First Active Date	Weak ▼	1	Oct 6, 2020	1	Nov 11, 2020
Dec 30, 2020	Weak	2nd Active Date	Median ▲	2	Sep 30, 2020	2	Nov 10, 2020
Dec 29, 2020	Weak	3rd	Weak ▲	3	Sep 24, 2020	3	Nov 9, 2020
Dec 28, 2020	Weak	4th	Moderate ▼	4	Sep 21, 2020	4	Nov 4, 2020
Dec 24, 2020	Weak	5th	Weak ▼	5	Sep 18, 2020	5	Oct 28, 2020
Dec 23, 2020	Weak	6th	Median ▼	6	Sep 17, 2020	6	Oct 5, 2020
Dec 22, 2020	Weak	7th	Weak ▼	7	Sep 15, 2020	7	Oct 2, 2020
Dec 21, 2020	Moderate	8th	Weak ▲	8	Sep 14, 2020	8	Sep 25, 2020
Dec 18, 2020	Moderate	9th	Weak ▼	9	Sep 10, 2020	9	Sep 23, 2020
Dec 17, 2020	Weak	10th	Moderate ▲	10	Sep 9, 2020	10	Sep 14, 2020

Monthly / Seasonal Analysis Section - Volume M1 & Close Price % Change M2



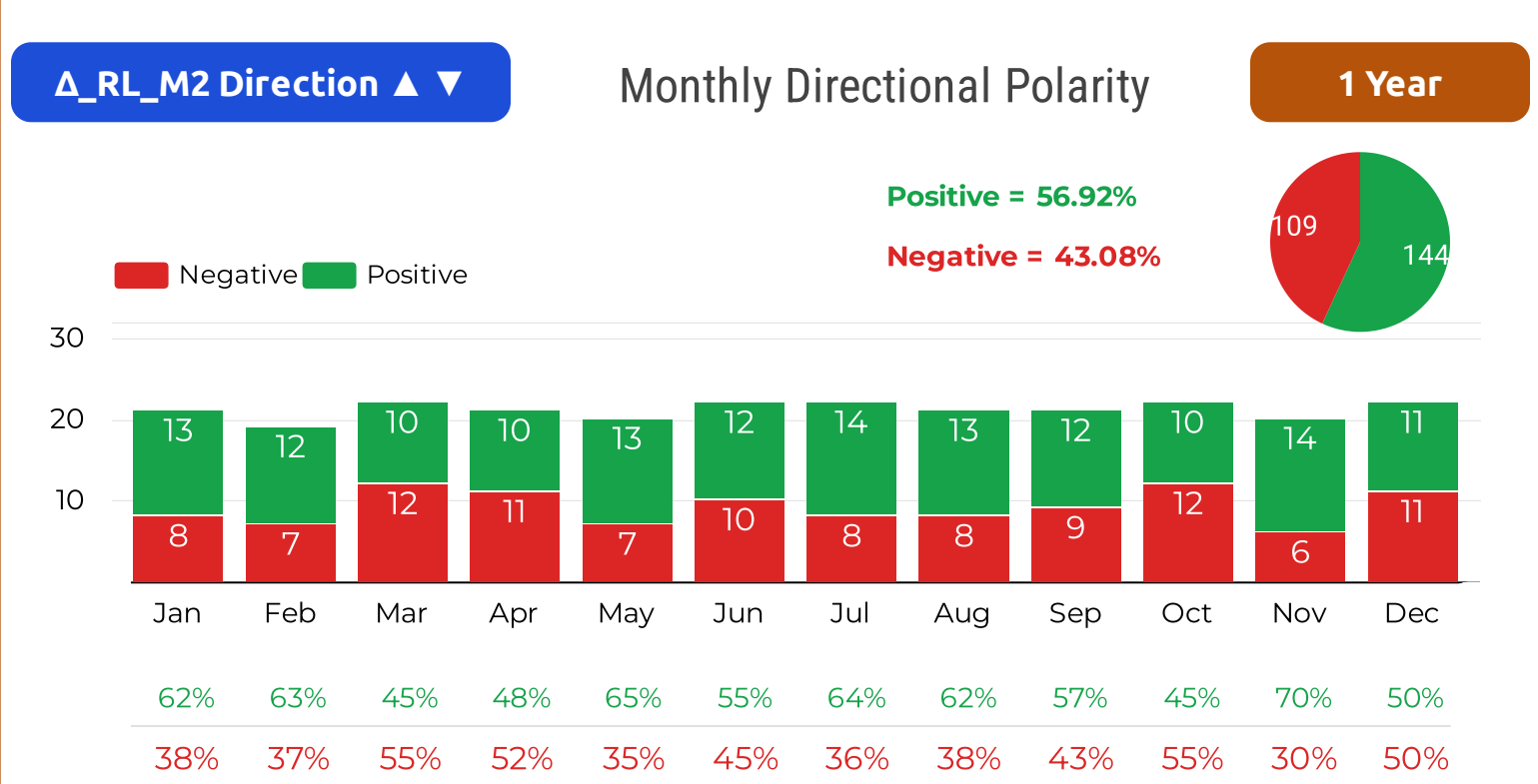
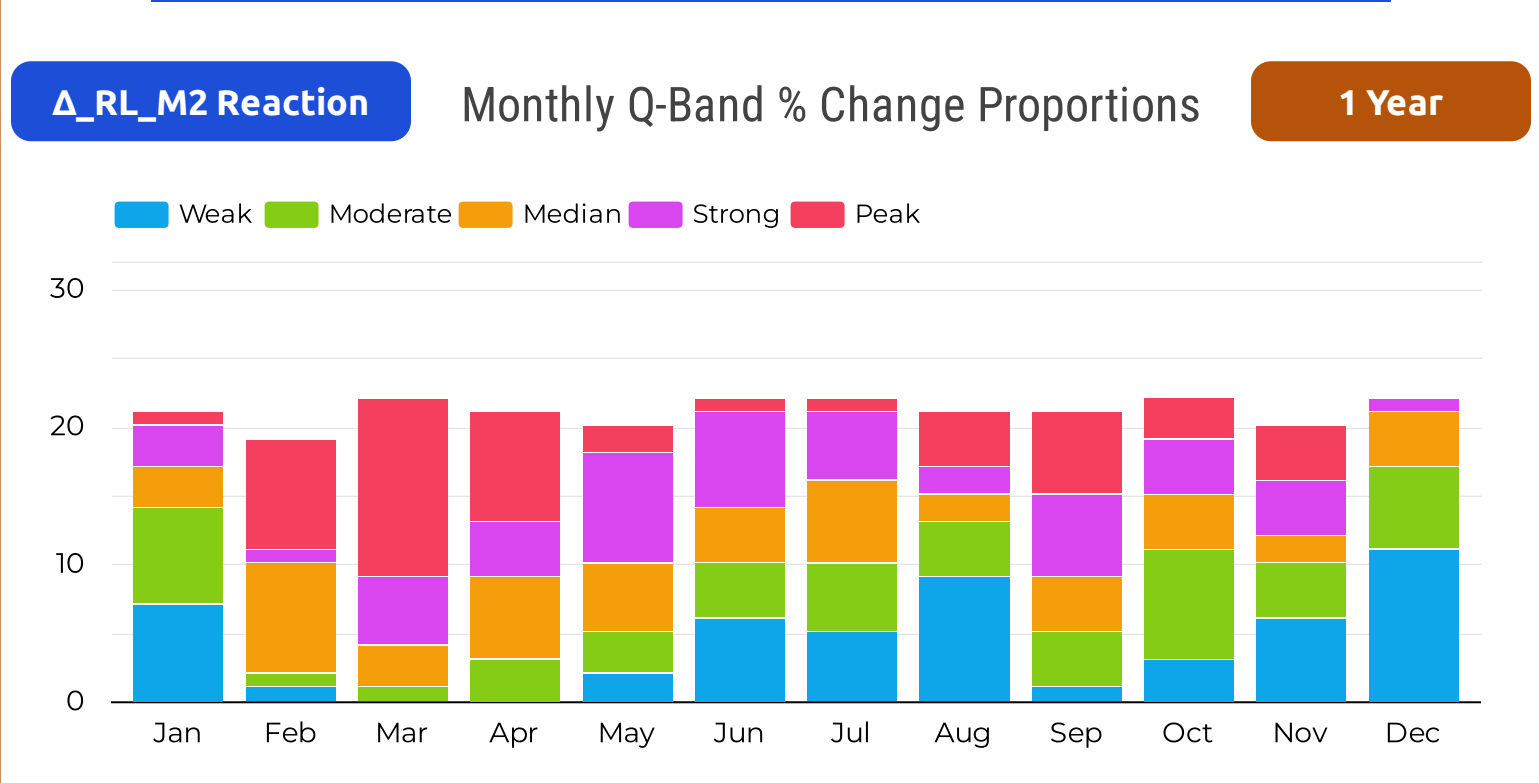
○_BL_M1 Baseline Monthly Q-Band Volume Dispersion 1 Year

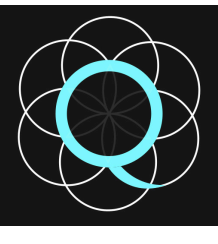
	Jan	Feb	Mar	Apr	May	Jun	Jul	Aug	Sep	Oct	Nov	Dec
Weak	12	5	0	0	0	1	3	2	0	7	3	18
Moderate	6	0	0	2	4	2	11	7	0	6	9	3
Median	3	1	0	8	4	13	6	5	0	6	4	1
Strong	0	4	11	5	3	6	2	5	8	2	4	0
Peak	0	9	11	6	9	0	0	2	13	1	0	0



△_RL_M2 Reaction Monthly Q-Band % Change Dispersion 1 Year

	Jan	Feb	Mar	Apr	May	Jun	Jul	Aug	Sep	Oct	Nov	Dec
Weak	7	1	0	0	2	6	5	9	1	3	6	11
Moderate	7	1	1	3	3	4	5	4	4	8	4	6
Median	3	8	3	6	5	4	6	2	4	4	2	4
Strong	3	1	5	4	8	7	5	2	6	4	4	1
Peak	1	8	13	8	2	1	1	4	6	3	4	0





Quintile Analysis Engine Report

[QAE Guide / Contact](#)

By Simon Hobbs



System Fundamentals

www.system-fundamentals.comMinimal guide provided below
→ See 'QAE Guide' for more details[Terms & Conditions](#)[Privacy Policy](#)

The **QAE Product** transforms 2 sets of cardinal daily metrics into ordinal **Q-Bands**, ranking and counting them across **Fixed Timeframes** using **Reverse Chronology**. The dataset is a closed 365/366-day historical envelope anchored to **Newest Date**. QAE processes 2 metric sets through 2 independent lenses: **M1 Baseline (BL)** and **M2 Reaction (RL)**. QAE is strictly historical making yesterday the newest allowable date.

Metric 1 - M1

→ Baseline Lens

○_BL =

Ranked by absolute state within the Complete One-Year Range

Metric 2 - M2

→ Reaction Lens

△_RL =

Reshaped to Reaction Intensity from Prior State then Ranked abs 1yr range

Border colors indicate timeframes

1 Month

3 Months

6 Months

1 Year

Distant 6M

All containers show identification badges for timeframes plus lens type with metric identity

Reserved space: Automated system status and integration details

QAE - Quintile Analysis Engine SEASONAL BACK-STITC PAGE

* Stock Market Skin *

REPORT TITLE: nVidia / NVDA / 2021 / NY / Metric 1 Volume / Metric 2 Close Price USD / EDT UTC -4hrs



Newest: Dec 31, 2021

Oldest: Jan 1, 2021

Newest Active Date: Dec 31, 2021

UTC-04:00 Atlantic Canada / Venezuela

QAE Timestamp: 2026-05-15 | 20:48:24

Day Count
365Active Days
252Participation
69.04%

○_BL_M1 Baseline

1 Year

Newest Active Dec 31, 2021
Volume

266,529,897

Moderate

Consecutive Days
(no direction) Moderate = 1

Lowest Volume

Oct 20, 2021

146,275,909

Highest Volume

Nov 4, 2021

1,153,630,928

BL Quintile Band M1
Volume Cut-Offs

Weak | Up To - 218,802,526

Moderate | Up To - 276,531,717

Median | Up To - 341,148,845

Strong | Up To - 494,114,139

Peak | Up To - 1,153,630,928

△_RL_M2 Reaction

1 Year

Newest Active Dec 31, 2021
Close Price % Change

0.608% = 29.41

Weak ▼

Consecutive Days
Weak ▼ = 1
(no direction) Weak = 1

Lowest % Change

Nov 12, 2021

0.000%

Highest % Change

Nov 4, 2021

12.030%

RL Quintile Band M2
Close Price % Change Cut-Offs

Weak | Up To - 0.6406%

Moderate | Up To - 1.1660%

Median | Up To - 2.0611%

Strong | Up To - 3.5709%

Peak | Up To - 12.0301%

○_BL_M1 Baseline

& △_RL_M2 Reaction

Newest Historical Activity

1 Year

Local History: Q-Bands Volume & Close Price % Change

Peak - Volume M1

Peak - Price % Change M2

Date	○_BL_M1	Position	△_RL_M2
Dec 31, 2021	Moderate	First Active Date	Weak ▼
Dec 30, 2021	Median	2nd Active Date	Median ▼
Dec 29, 2021	Strong	3rd	Moderate ▼
Dec 28, 2021	Strong	4th	Median ▼
Dec 27, 2021	Strong	5th	Peak ▲
Dec 23, 2021	Strong	6th	Moderate ▲
Dec 22, 2021	Strong	7th	Moderate ▲
Dec 21, 2021	Peak	8th	Peak ▲
Dec 20, 2021	Strong	9th	Weak ▼
Dec 17, 2021	Peak	10th	Strong ▼

Peak List	Date_○_BL...
1	Dec 21, 2021
2	Dec 17, 2021
3	Dec 16, 2021
4	Dec 15, 2021
5	Dec 14, 2021
6	Dec 13, 2021
7	Dec 7, 2021
8	Dec 6, 2021
9	Dec 3, 2021
10	Nov 30, 2021

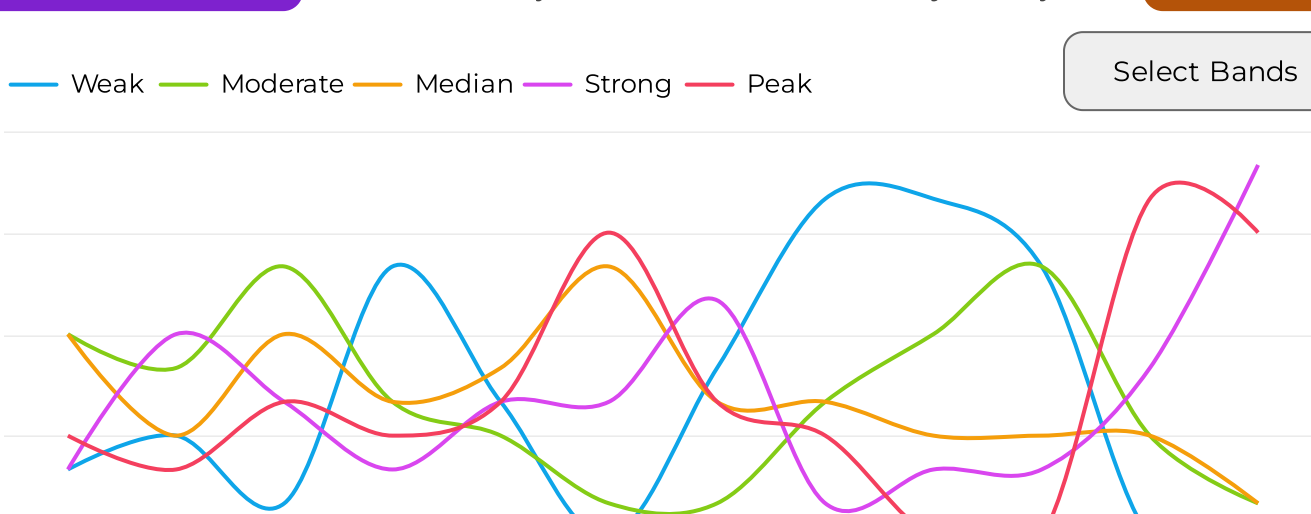
Peak List	Date_△_RL...
1	Dec 27, 2021
2	Dec 21, 2021
3	Dec 16, 2021
4	Dec 15, 2021
5	Dec 13, 2021
6	Dec 9, 2021
7	Dec 7, 2021
8	Dec 3, 2021
9	Dec 1, 2021
10	Nov 29, 2021

Monthly / Seasonal Analysis Section - Volume M1 & Close Price % Change M2

○_BL_M1 Baseline

Monthly Q-Band Volume Trajectory

1 Year



○_BL_M1 Baseline

Monthly Q-Band Volume Dispersion

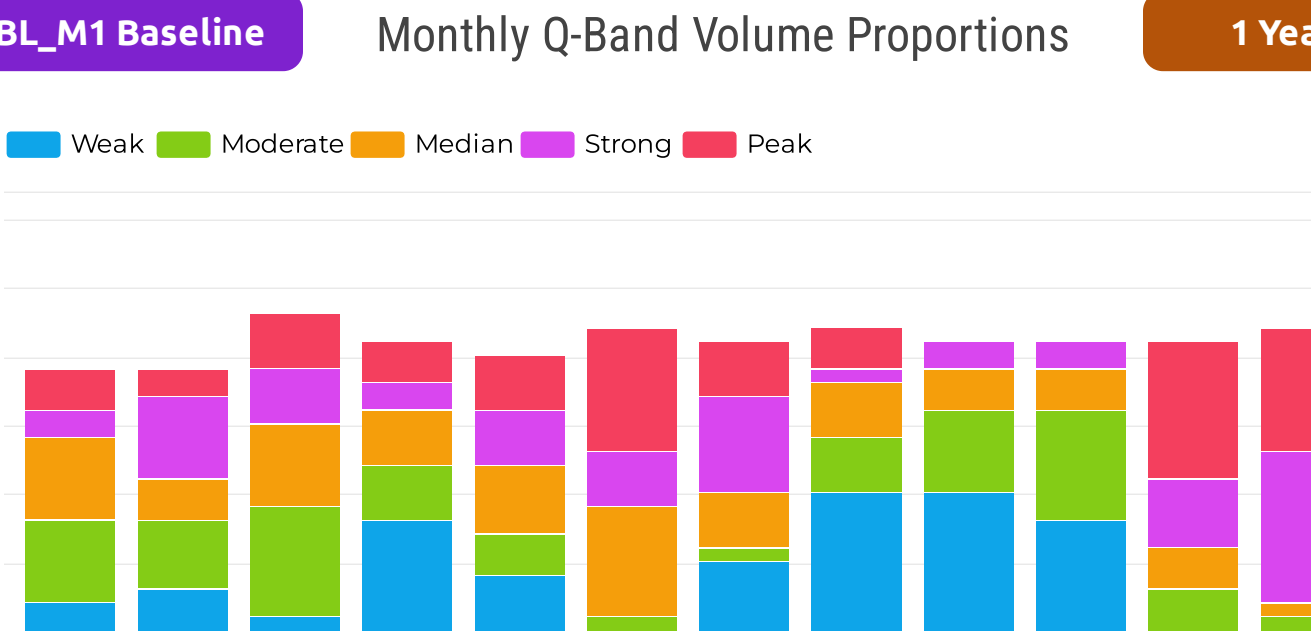
1 Year

	Jan	Feb	Mar	Apr	May	Jun	Jul	Aug	Sep	Oct	Nov	Dec
Weak	2	3	1	8	4	0	5	10	10	8	0	0
Moderate	6	5	8	4	3	1	1	4	6	8	3	1
Median	6	3	6	4	5	8	4	4	3	3	3	1
Strong	2	6	4	2	4	4	7	1	2	2	5	11
Peak	3	2	4	3	4	9	4	3	0	0	10	9

○_BL_M1 Baseline

Monthly Q-Band Volume Proportions

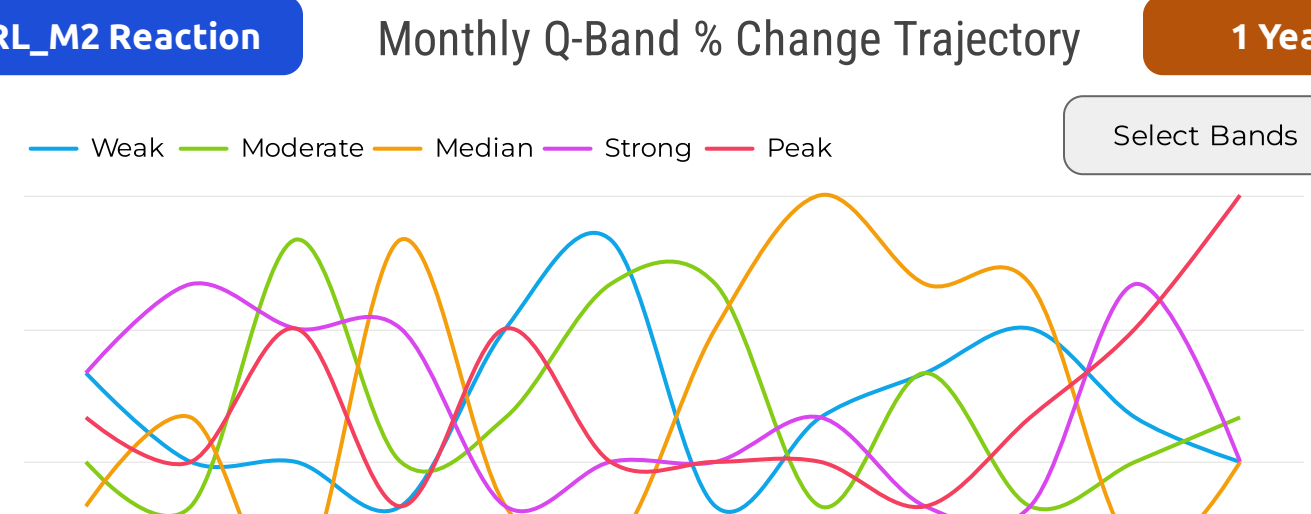
1 Year



△_RL_M2 Reaction

Monthly Q-Band % Change Trajectory

1 Year



△_RL_M2 Reaction

Monthly Q-Band % Change Dispersion

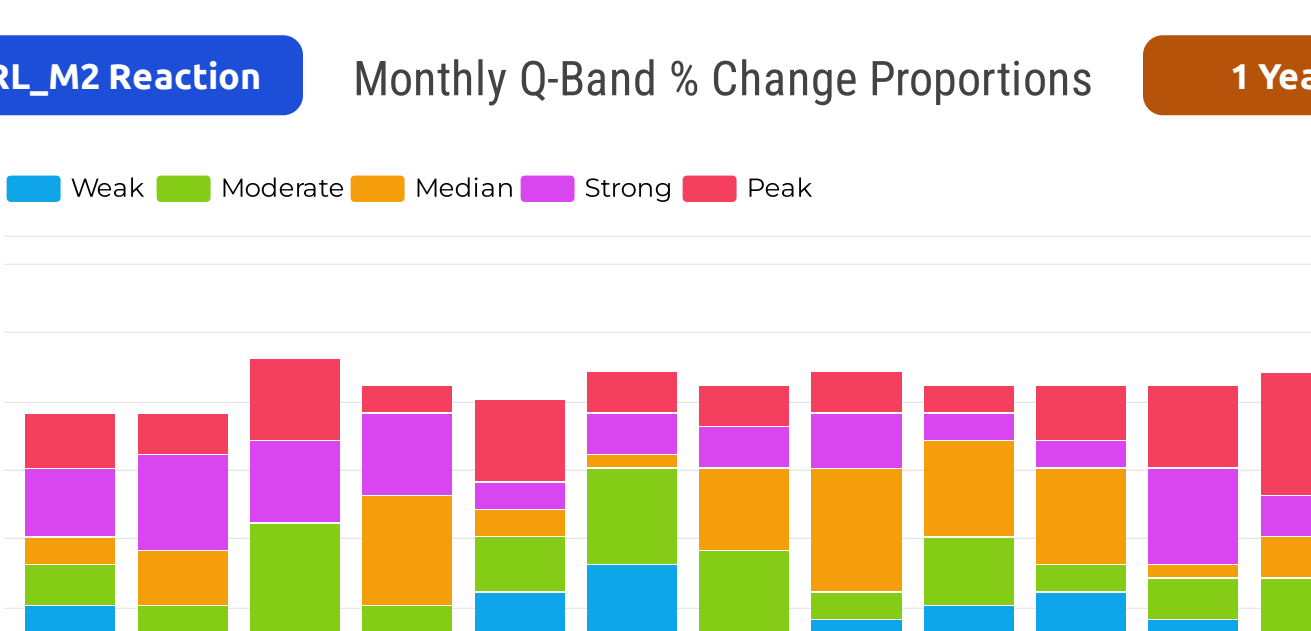
1 Year

	Jan	Feb	Mar	Apr	May	Jun	Jul	Aug	Sep	Oct	Nov	Dec
Weak	5	3	3	2	6	8	2	4	5	6	4	3
Moderate	3	2	8	3	4	7	7	2	5	2	3	4
Median	2	4	0	8	2	1	6	9	7	7	1	3
Strong	5	7	6	6	2	3	3	4	2	2	7	3
Peak	4	3	6	2	6	3	3	3	2	4	6	9

△_RL_M2 Reaction

Monthly Q-Band % Change Proportions

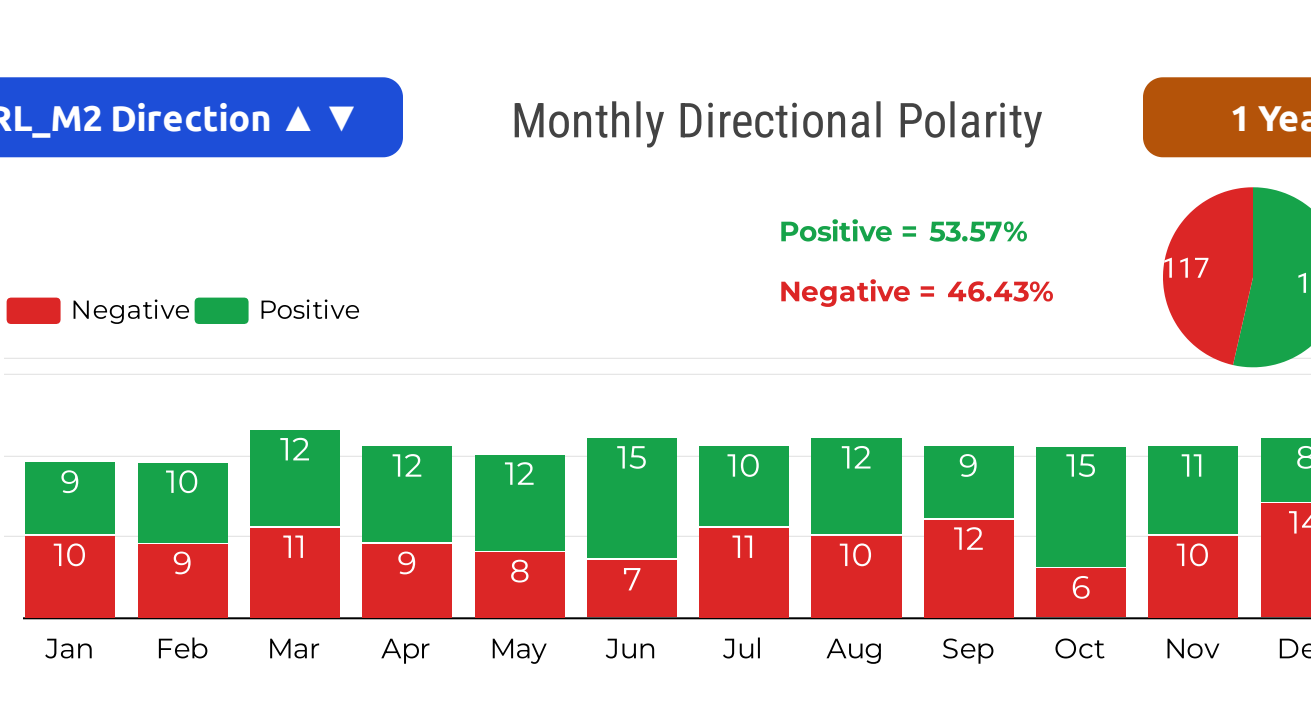
1 Year

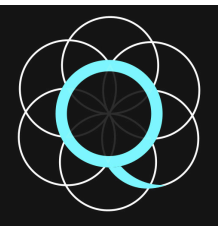


△_RL_M2 Direction ▲ ▼

Monthly Directional Polarity

1 Year





Quintile Analysis Engine Report

[QAE Guide / Contact](#)

By Simon Hobbs



System Fundamentals

www.system-fundamentals.comMinimal guide provided below
→ See 'QAE Guide' for more details[Terms & Conditions](#)[Privacy Policy](#)

The **QAE Product** transforms 2 sets of cardinal daily metrics into ordinal **Q-Bands**, ranking and counting them across **Fixed Timeframes** using **Reverse Chronology**. The dataset is a closed 365/366-day historical envelope anchored to **Newest Date**. QAE processes 2 metric sets through 2 independent lenses: **M1 Baseline (BL)** and **M2 Reaction (RL)**. QAE is strictly historical making yesterday the newest allowable date.

Metric 1 - M1 → Baseline Lens **○_BL =** Ranked by absolute state within the Complete One-Year Range

Metric 2 - M2 → Reaction Lens **△_RL =** Reshaped to Reaction Intensity from Prior State then Ranked abs 1yr range

All containers show identification badges for timeframes plus lens type with metric identity

Border colors indicate timeframes

1 Month

3 Months

6 Months

1 Year

Distant 6M

Reserved space: Automated system status and integration details

QAE - Quintile Analysis Engine
SEASONAL BACK-STITC PAGE
* Stock Market Skin *

REPORT TITLE: nVidia / NVDA / 2022 / NY / Metric 1 Volume / Metric 2 Close Price USD / EDT UTC -4hrs

Newest: Dec 31, 2022
Oldest: Jan 1, 2022
Newest Active Date: Dec 30, 2022

UTC-04:00 Atlantic Canada / Venezuela

QAE Timestamp: 2026-05-15 | 21:00:43

Day Count: 365
Active Days: 252
Participation: 69.04%

○_BL_M1 Baseline 1 Year

Newest Active Dec 30, 2022
Volume
310,489,797

Weak

Consecutive Days
(no direction) Weak = 3

Lowest Volume: Nov 25, 2022 (167,934,298)
Highest Volume: Nov 10, 2022 (1,178,864,828)

BL Quintile Band M1 Volume Cut-Offs

- Weak | Up To - 435,180,696
- Moderate | Up To - 496,131,905
- Median | Up To - 557,049,294
- Strong | Up To - 653,142,453
- Peak | Up To - 1,178,864,828

△_RL_M2 Reaction 1 Year

Newest Active Dec 30, 2022
Close Price % Change
0.068% = 14.61

Weak ▲

Consecutive Days
Weak ▲ = 1
(no direction) Weak = 1

Lowest % Change: Jan 24, 2022 (0.000%)
Highest % Change: Nov 10, 2022 (14.296%)

RL Quintile Band M2 Close Price % Change Cut-Offs

- Weak | Up To - 1.1020%
- Moderate | Up To - 2.0423%
- Median | Up To - 3.2558%
- Strong | Up To - 5.2756%
- Peak | Up To - 14.2961%

○_BL_M1 Baseline & △_RL_M2 Reaction Newest Historical Activity 1 Year

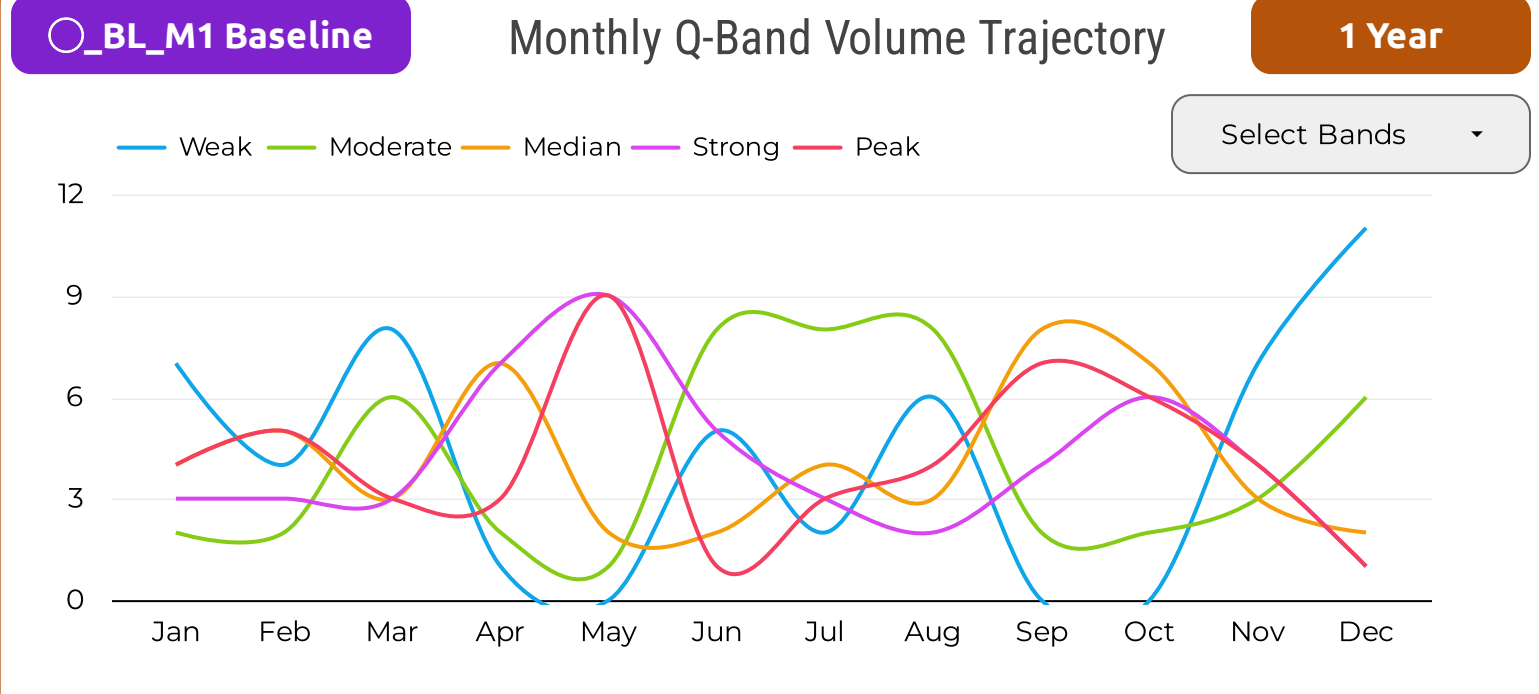
Local History: Q-Bands Volume & Close Price % Change

Date	○_BL_M1	Position	△_RL_M2
Dec 30, 2022	Weak	First Active Date	Weak ▲
Dec 29, 2022	Weak	2nd Active Date	Strong ▲
Dec 28, 2022	Weak	3rd	Weak ▼
Dec 27, 2022	Moderate	4th	Peak ▼
Dec 23, 2022	Weak	5th	Weak ▼
Dec 22, 2022	Strong	6th	Peak ▼
Dec 21, 2022	Weak	7th	Median ▲
Dec 20, 2022	Weak	8th	Weak ▼
Dec 19, 2022	Weak	9th	Moderate ▼
Dec 16, 2022	Moderate	10th	Median ▼

Peak List	Date_○_BL...
1	Dec 13, 2022
2	Nov 17, 2022
3	Nov 11, 2022
4	Nov 10, 2022
5	Nov 2, 2022
6	Oct 18, 2022
7	Oct 14, 2022
8	Oct 13, 2022
9	Oct 11, 2022
10	Oct 10, 2022

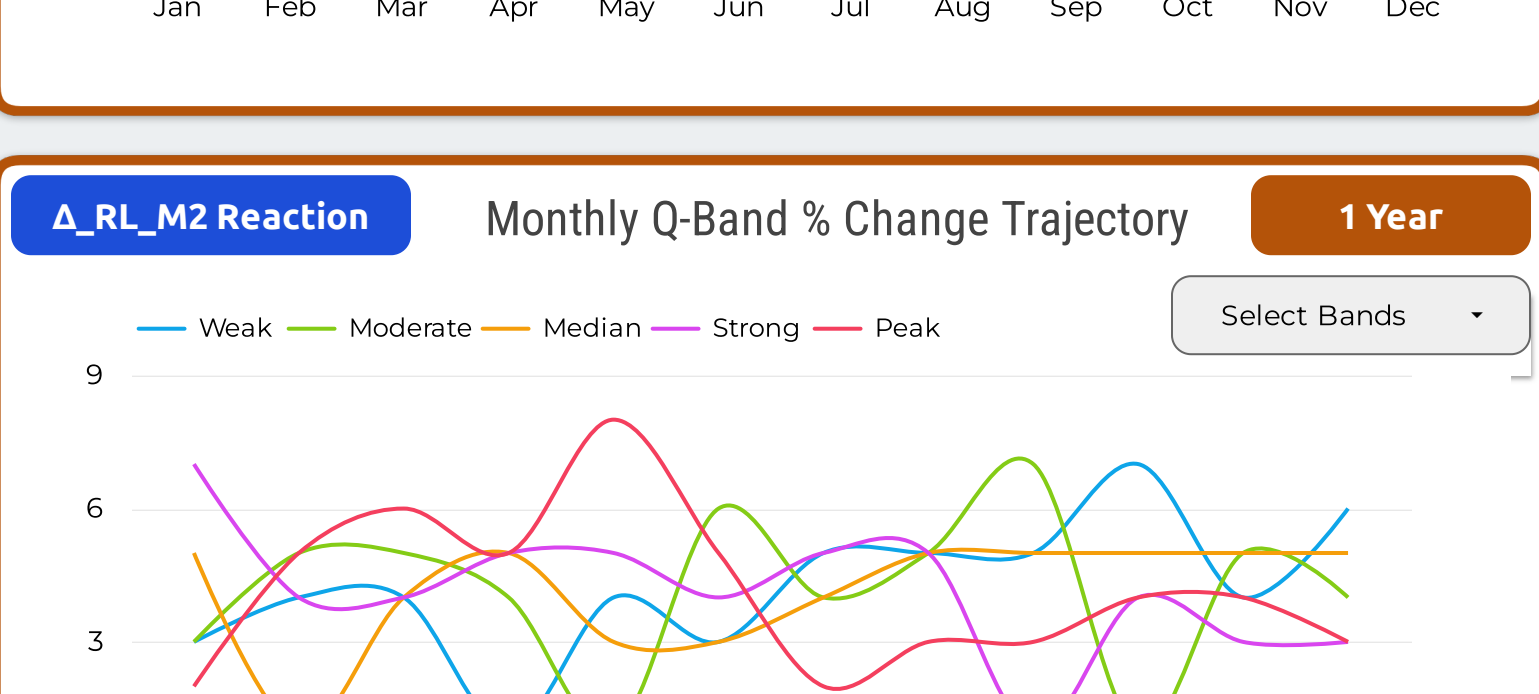
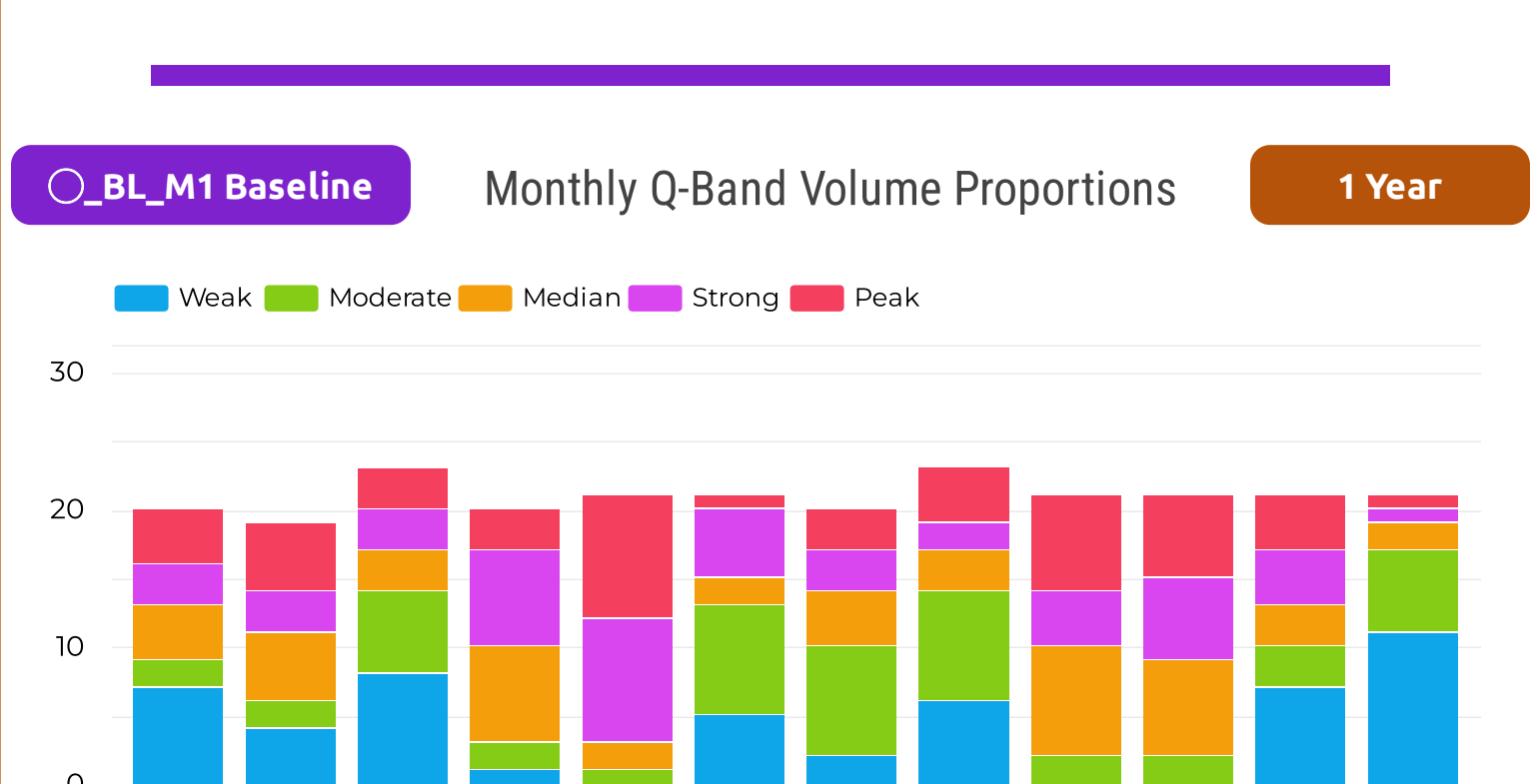
Peak List	Date_△_RL...
1	Dec 27, 2022
2	Dec 22, 2022
3	Dec 8, 2022
4	Nov 30, 2022
5	Nov 10, 2022
6	Nov 9, 2022
7	Nov 4, 2022
8	Oct 17, 2022
9	Oct 14, 2022
10	Oct 7, 2022

Monthly / Seasonal Analysis Section - Volume M1 & Close Price % Change M2



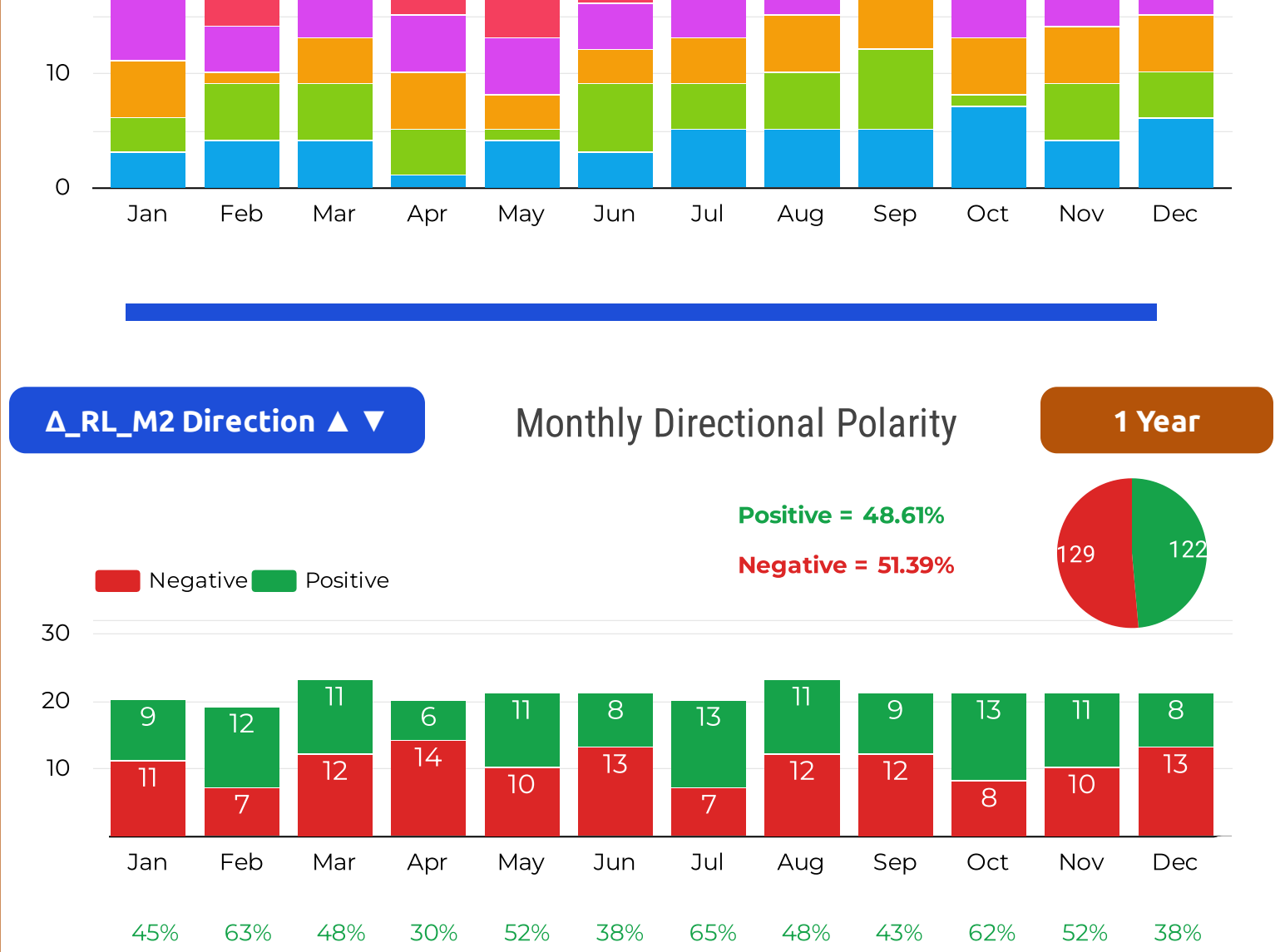
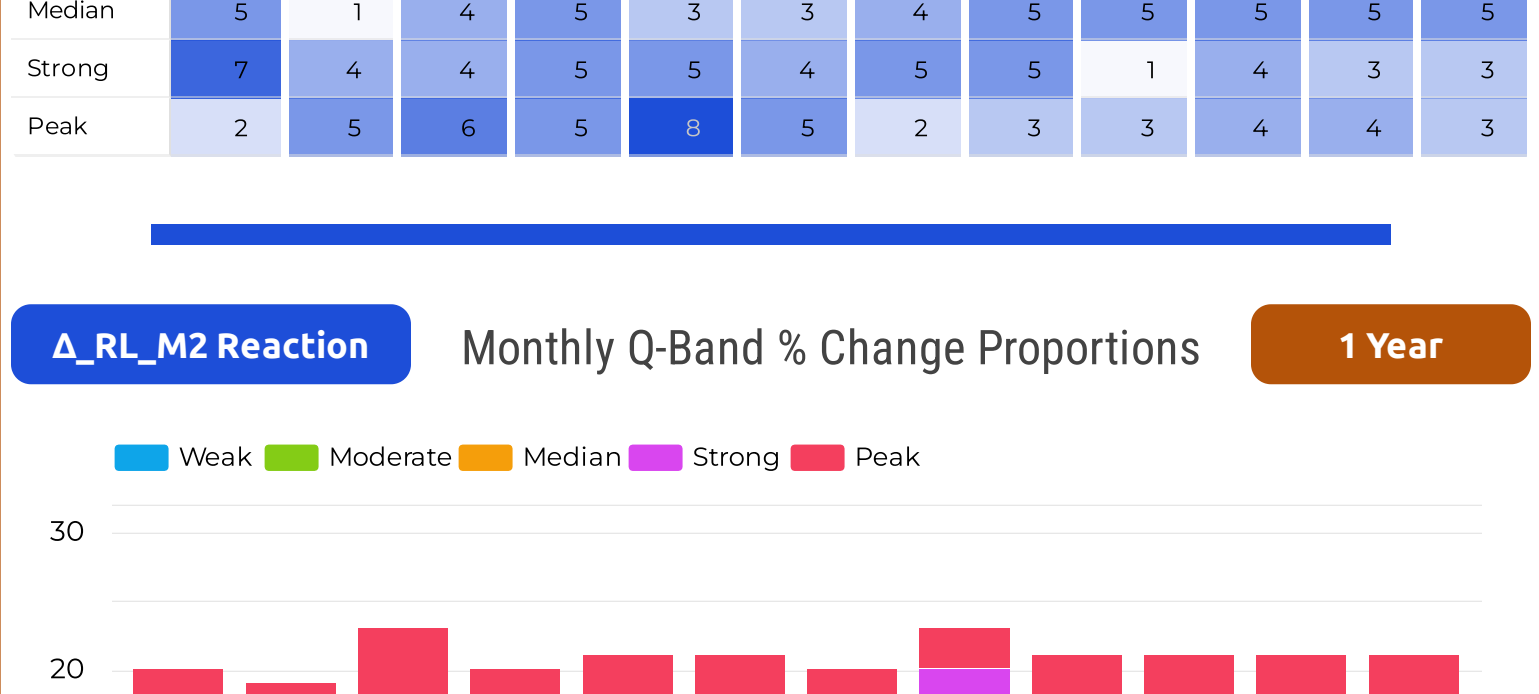
○_BL_M1 Baseline Monthly Q-Band Volume Dispersion 1 Year

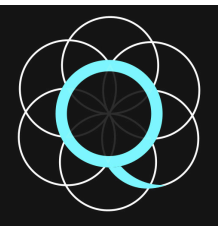
	Jan	Feb	Mar	Apr	May	Jun	Jul	Aug	Sep	Oct	Nov	Dec
Weak	7	4	8	1	0	5	2	6	0	0	7	11
Moderate	2	2	6	2	1	8	8	8	2	2	3	6
Median	4	5	3	7	2	2	4	3	8	7	3	2
Strong	3	3	3	7	9	5	3	2	4	6	4	1
Peak	4	5	3	3	9	1	3	4	7	6	4	1



△_RL_M2 Reaction Monthly Q-Band % Change Dispersion 1 Year

	Jan	Feb	Mar	Apr	May	Jun	Jul	Aug	Sep	Oct	Nov	Dec
Weak	3	4	4	1	4	3	5	5	5	7	4	6
Moderate	3	5	5	4	1	6	4	5	7	1	5	4
Median	5	1	4	5	3	3	4	5	5	5	5	5
Strong	7	4	4	5	5	4	5	5	1	4	3	3
Peak	2	5	6	5	8	5	2	3	3	4	4	3





Quintile Analysis Engine Report

[QAE Guide / Contact](#)

By Simon Hobbs



System Fundamentals

www.system-fundamentals.comMinimal guide provided below
→ See 'QAE Guide' for more details[Terms & Conditions](#)[Privacy Policy](#)

The **QAE Product** transforms 2 sets of cardinal daily metrics into ordinal **Q-Bands**, ranking and counting them across **Fixed Timeframes** using **Reverse Chronology**. The dataset is a closed 365/366-day historical envelope anchored to **Newest Date**. QAE processes 2 metric sets through 2 independent lenses: **M1 Baseline (BL)** and **M2 Reaction (RL)**. QAE is strictly historical making yesterday the newest allowable date.

Metric 1 - M1 → Baseline Lens **○_BL =** Ranked by absolute state within the Complete One-Year Range

Metric 2 - M2 → Reaction Lens **△_RL =** Reshaped to Reaction Intensity from Prior State then Ranked abs 1yr range

All containers show identification badges for timeframes plus lens type with metric identity

Border colors indicate timeframes

1 Month

3 Months

6 Months

1 Year

Distant 6M

Reserved space: Automated system status and integration details

QAE - Quintile Analysis Engine
SEASONAL BACK-STITC PAGE
* Stock Market Skin *

REPORT TITLE: nVidia / NVDA / 2023 / NY / Metric 1 Volume / Metric 2 Close Price USD / EDT UTC -4hrs

Newest: Dec 31, 2023
Oldest: Jan 1, 2023
Newest Active Date: Dec 29, 2023

UTC-04:00 Atlantic Canada / Venezuela

QAE Timestamp: 2026-05-15 | 21:06:46

Day Count: 365
Active Days: 250
Participation: 68.49%

○_BL_M1 Baseline 1 Year

Newest Active Dec 29, 2023
Volume
389,293,276

Moderate

Consecutive Days (no direction) Moderate = 1

Lowest Volume: Jul 3, 2023 (197,754,098)
Highest Volume: May 25, 2023 (1,543,911,075)

BL Quintile Band M1 Volume Cut-Offs

- Weak | Up To - 368,287,192
- Moderate | Up To - 409,878,654
- Median | Up To - 467,000,411
- Strong | Up To - 548,073,595
- Peak | Up To - 1,543,911,075

△_RL_M2 Reaction 1 Year

Newest Active Dec 29, 2023
Close Price % Change
0.000% = 49.52

Weak ▼

Consecutive Days Weak ▼ = 1 (no direction) Weak = 3

Lowest % Change: Mar 13, 2023 (0.000%)
Highest % Change: May 25, 2023 (24.361%)

RL Quintile Band M2 Close Price % Change Cut-Offs

- Weak | Up To - 0.6740%
- Moderate | Up To - 1.3266%
- Median | Up To - 2.1548%
- Strong | Up To - 3.0960%
- Peak | Up To - 24.3615%

○_BL_M1 Baseline & △_RL_M2 Reaction Newest Historical Activity 1 Year

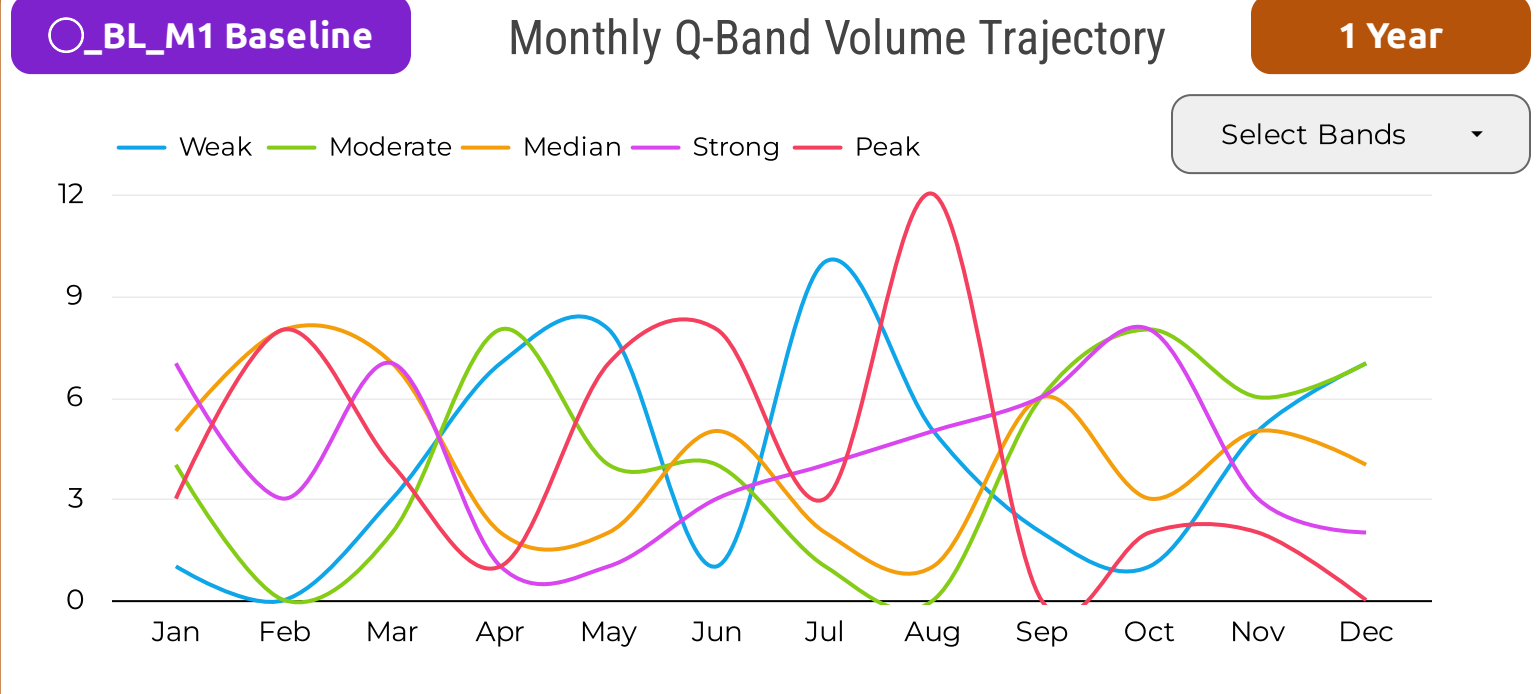
Local History: Q-Bands Volume & Close Price % Change

Date	○_BL_M1	Position	△_RL_M2
Dec 29, 2023	Moderate	First Active Date	Weak ▼
Dec 28, 2023	Weak	2nd Active Date	Weak ▲
Dec 27, 2023	Weak	3rd	Weak ▲
Dec 26, 2023	Weak	4th	Moderate ▲
Dec 22, 2023	Weak	5th	Weak ▼
Dec 21, 2023	Weak	6th	Median ▲
Dec 20, 2023	Moderate	7th	Strong ▼
Dec 19, 2023	Median	8th	Moderate ▼
Dec 18, 2023	Median	9th	Strong ▲
Dec 15, 2023	Strong	10th	Moderate ▲

Peak List	Date_○_BL...
1	Nov 22, 2023
2	Nov 21, 2023
3	Oct 18, 2023
4	Oct 17, 2023
5	Aug 30, 2023
6	Aug 29, 2023
7	Aug 28, 2023
8	Aug 25, 2023
9	Aug 24, 2023
10	Aug 23, 2023

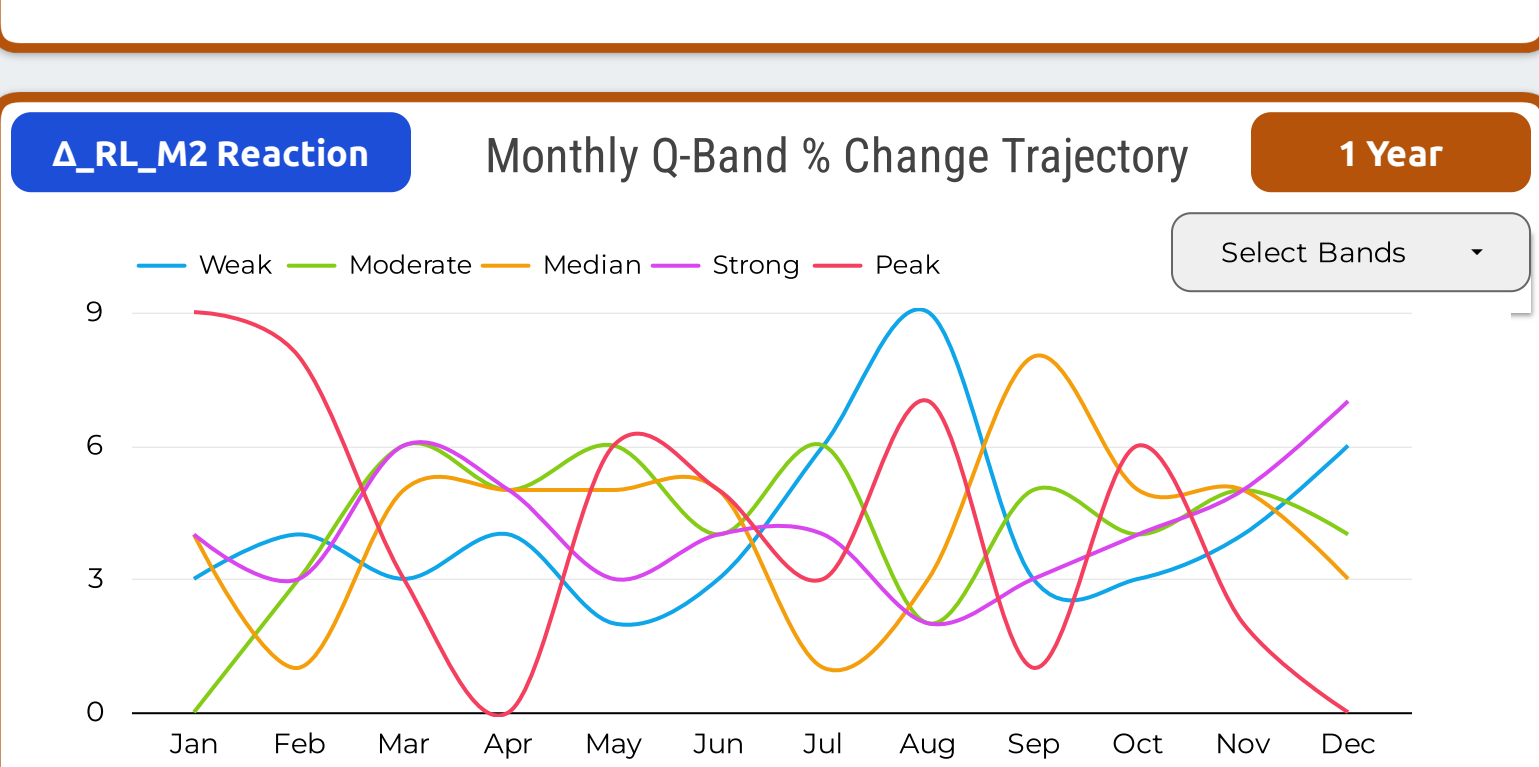
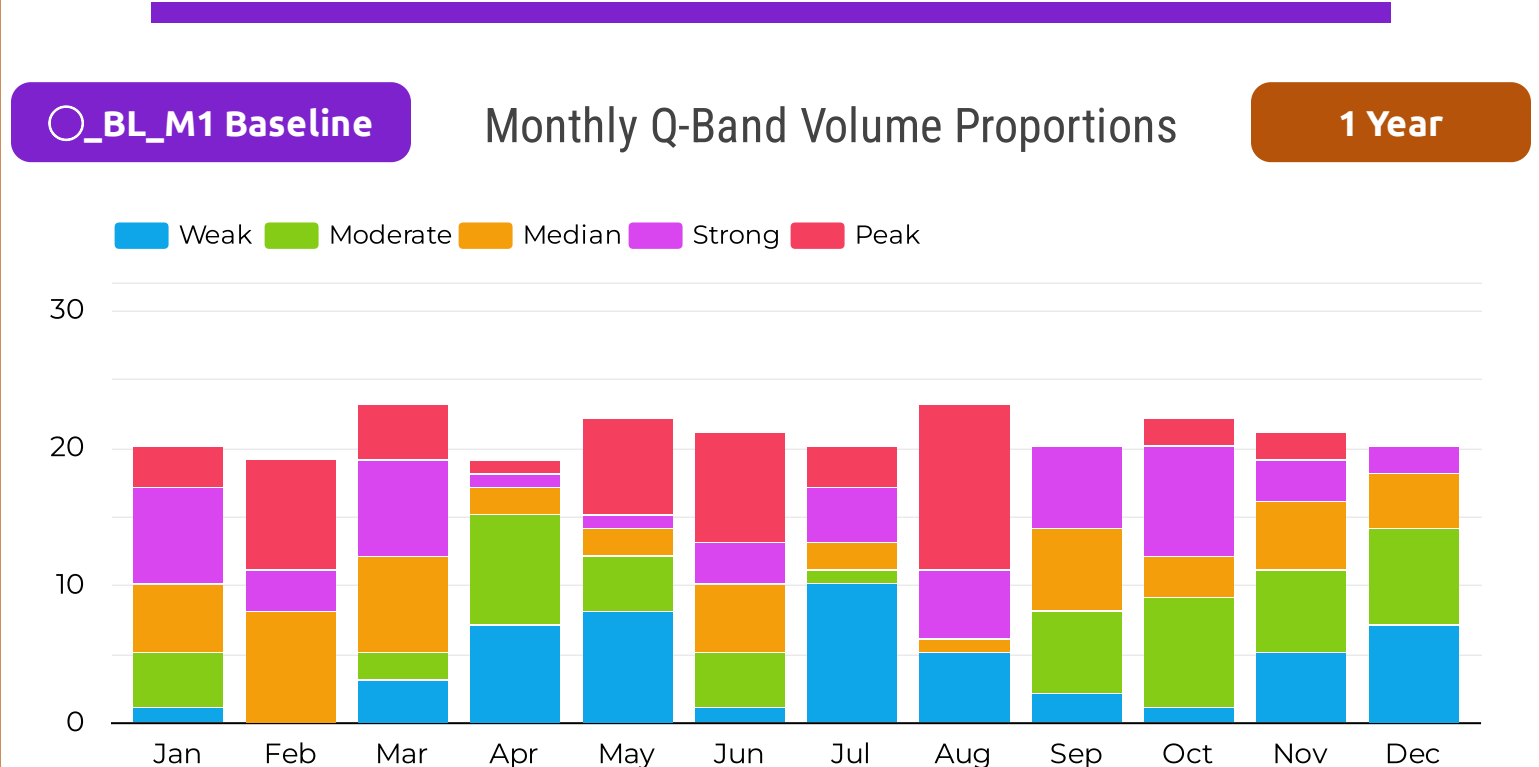
Peak List	Date_△_RL...
1	Nov 3, 2023
2	Nov 1, 2023
3	Oct 26, 2023
4	Oct 25, 2023
5	Oct 23, 2023
6	Oct 18, 2023
7	Oct 17, 2023
8	Oct 13, 2023
9	Sep 15, 2023
10	Aug 29, 2023

Monthly / Seasonal Analysis Section - Volume M1 & Close Price % Change M2



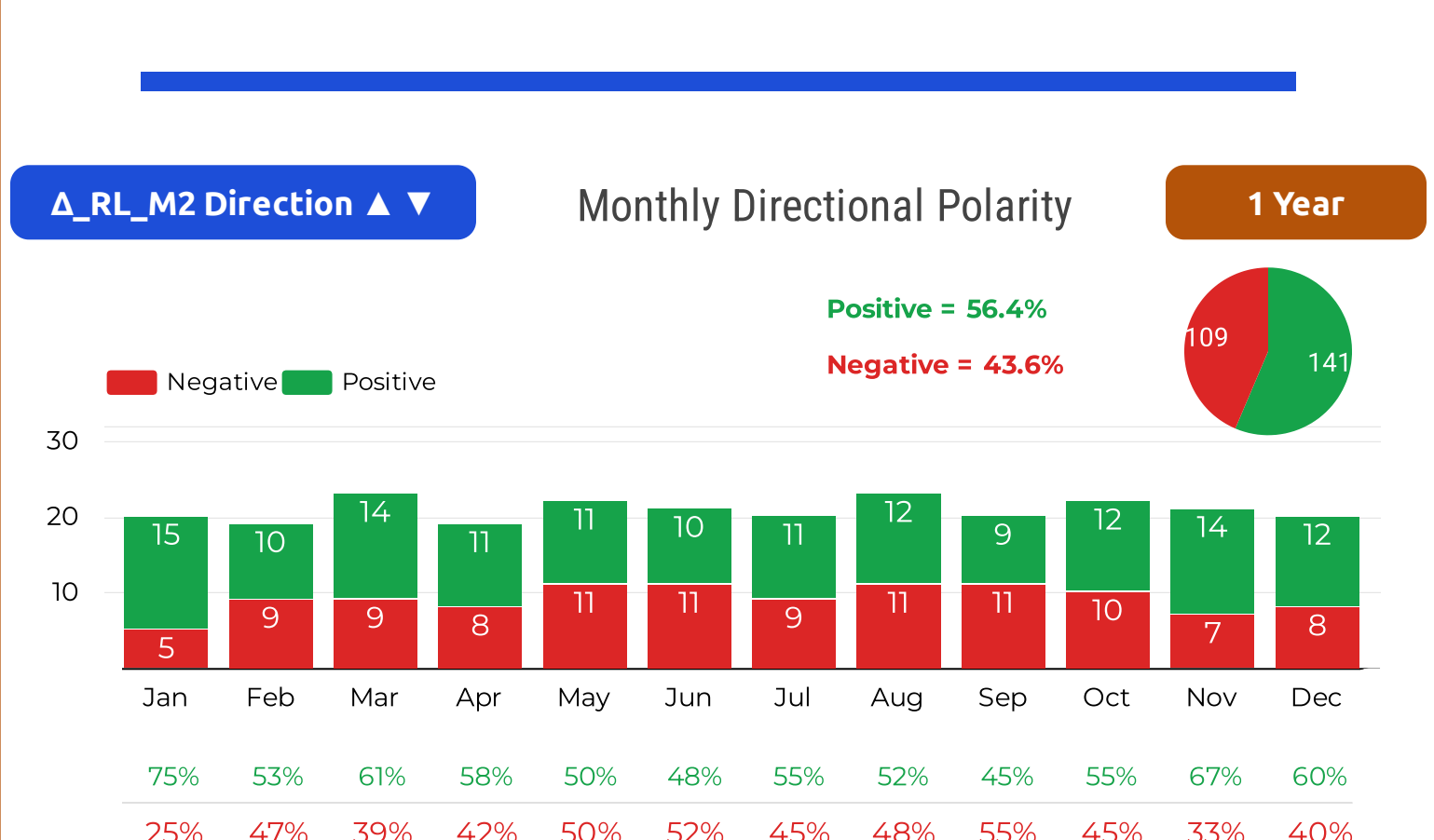
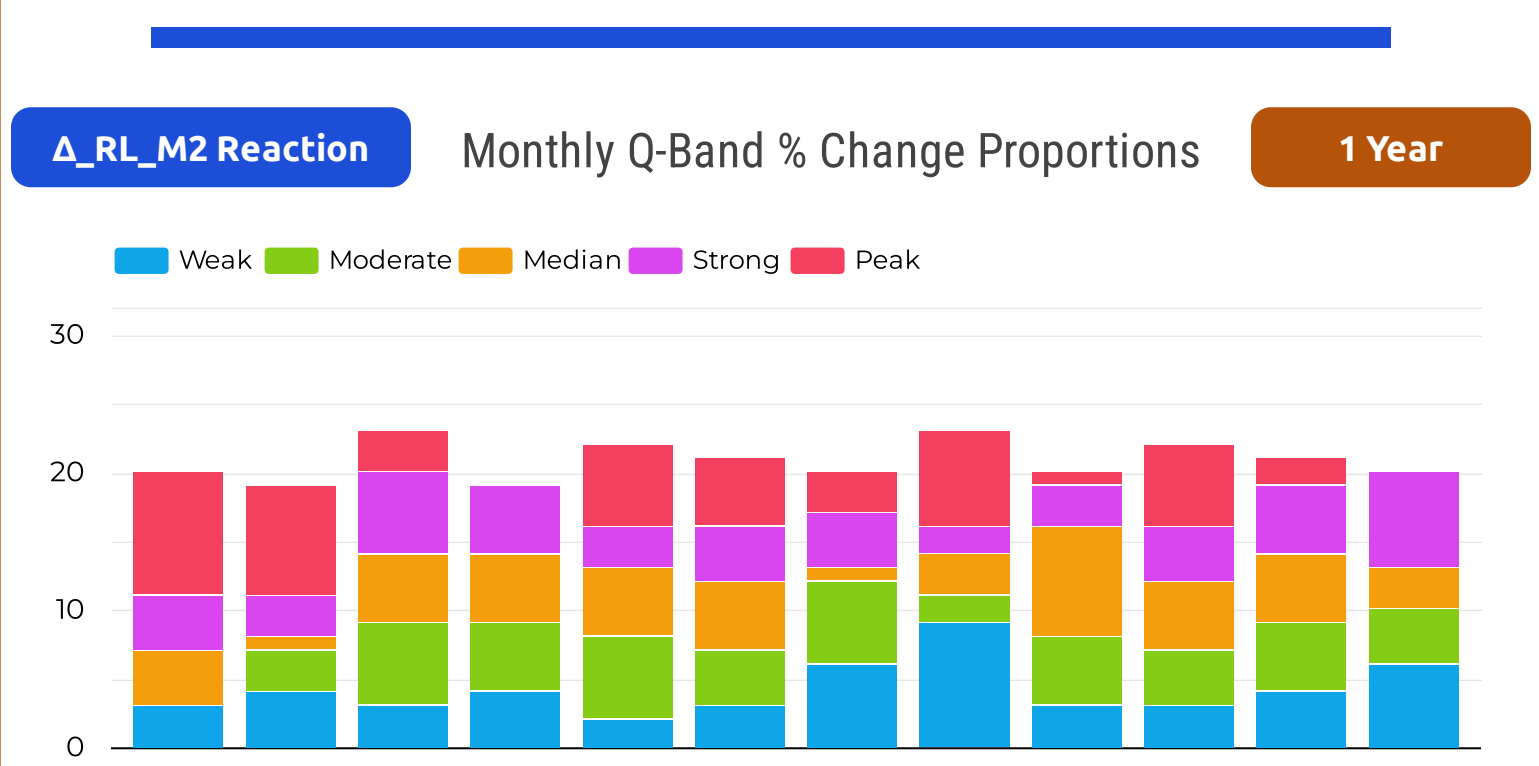
○_BL_M1 Baseline Monthly Q-Band Volume Dispersion 1 Year

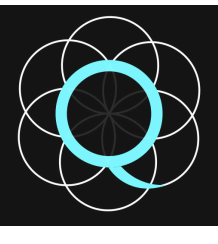
	Jan	Feb	Mar	Apr	May	Jun	Jul	Aug	Sep	Oct	Nov	Dec
Weak	1	0	3	7	8	1	10	5	2	1	5	7
Moderate	4	0	2	8	4	4	1	0	6	8	6	7
Median	5	8	7	2	2	5	2	1	6	3	5	4
Strong	7	3	7	1	1	3	4	5	6	8	3	2
Peak	3	8	4	1	7	8	3	12	0	2	2	0



△_RL_M2 Reaction Monthly Q-Band % Change Dispersion 1 Year

	Jan	Feb	Mar	Apr	May	Jun	Jul	Aug	Sep	Oct	Nov	Dec
Weak	3	4	3	4	2	3	6	9	3	3	4	6
Moderate	0	3	6	5	6	4	6	2	5	4	5	4
Median	4	1	5	5	5	5	1	3	8	5	5	3
Strong	4	3	6	5	3	4	4	2	3	4	5	7
Peak	9	8	3	0	6	5	3	7	1	6	2	0





Quintile Analysis Engine Report

[QAE Guide / Contact](#)

By Simon Hobbs



System Fundamentals

www.system-fundamentals.comMinimal guide provided below
→ See 'QAE Guide' for more details[Terms & Conditions](#)[Privacy Policy](#)

The **QAE Product** transforms 2 sets of cardinal daily metrics into ordinal **Q-Bands**, ranking and counting them across **Fixed Timeframes** using **Reverse Chronology**. The dataset is a closed 365/366-day historical envelope anchored to **Newest Date**. QAE processes 2 metric sets through 2 independent lenses: **M1 Baseline (BL)** and **M2 Reaction (RL)**. QAE is strictly historical making yesterday the newest allowable date.

Metric 1 - M1 → Baseline Lens **○_BL =** Ranked by absolute state within the Complete One-Year Range

Metric 2 - M2 → Reaction Lens **△_RL =** Reshaped to Reaction Intensity from Prior State then Ranked abs 1yr range

Border colors indicate timeframes

1 Month

3 Months

6 Months

1 Year

Distant 6M

Reserved space: Automated system status and integration details

QAE - Quintile Analysis Engine
SEASONAL BACK-STITC PAGE
* Stock Market Skin *

REPORT TITLE: nVidia / NVDA / 2024 / NY / Metric 1 Volume / Metric 2 Close Price USD / EDT UTC -4hrs

NVIDIA

Newest: Dec 31, 2024
Oldest: Jan 1, 2024
Newest Active Date: Dec 31, 2024

UTC-04:00 Atlantic Canada / Venezuela

QAE Timestamp: 2026-05-13 | 23:45:12

Day Count: 366 | Active Days: 252 | Participation: 68.85%

○_BL_M1 Baseline 1 Year

Newest Active Dec 31, 2024
Volume
155,659,203

Weak

Consecutive Days (no direction) Weak = 6

Lowest Volume: Dec 24, 2024 (105,157,000)
Highest Volume: Apr 1, 2024 (1,142,268,969)

BL Quintile Band M1
Volume Cut-Offs

- Weak | Up To - 232,010,265
- Moderate | Up To - 306,661,201
- Median | Up To - 400,439,347
- Strong | Up To - 495,539,589
- Peak | Up To - 1,142,268,969

△_RL_M2 Reaction 1 Year

Newest Active Dec 31, 2024
Close Price % Change
2.327% = 134.29

Median ▼

Consecutive Days Median ▼ = 1 (no direction) Median = 1

Lowest % Change: Apr 1, 2024 (0.000%)
Highest % Change: Feb 22, 2024 (16.407%)

RL Quintile Band M2
Close Price % Change Cut-Offs

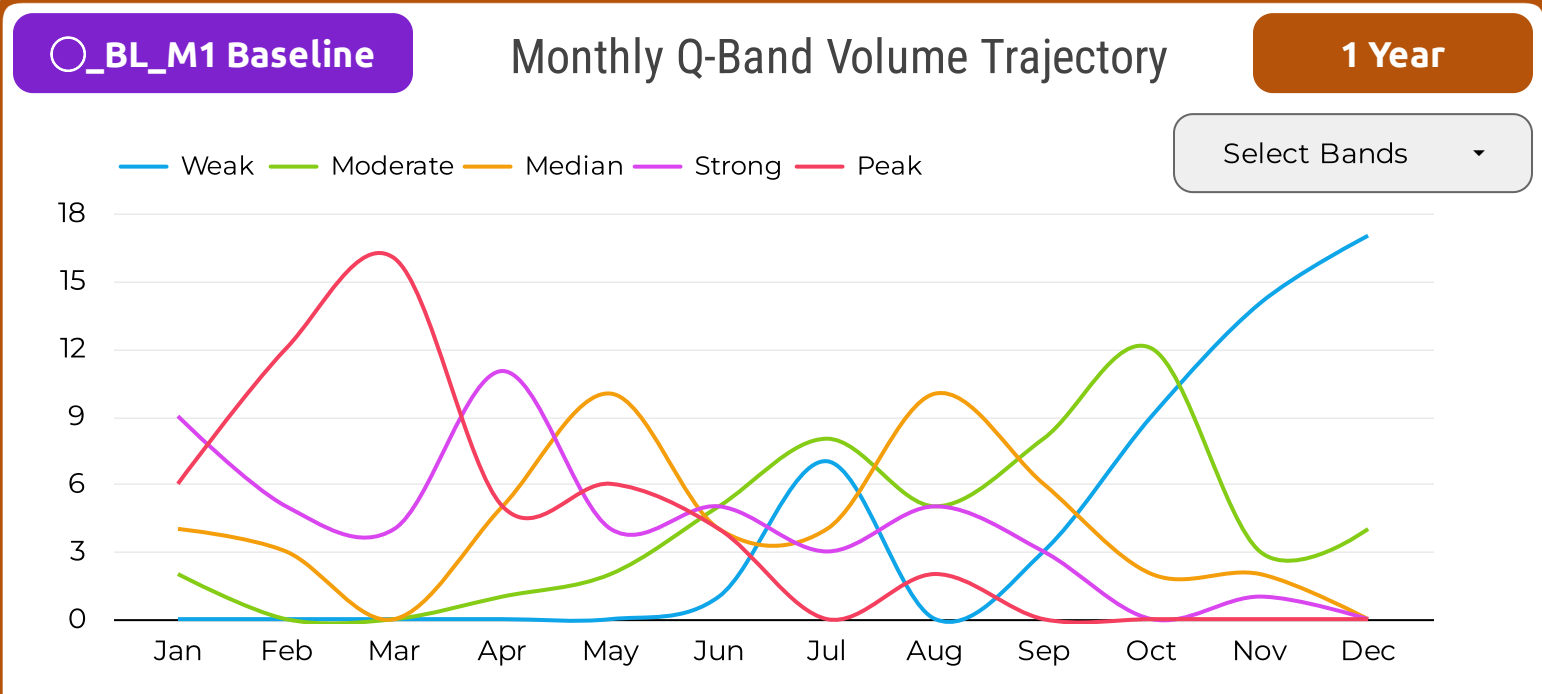
- Weak | Up To - 0.7210%
- Moderate | Up To - 1.5923%
- Median | Up To - 2.4699%
- Strong | Up To - 3.8497%
- Peak | Up To - 16.4073%

○_BL_M1 Baseline & **△_RL_M2 Reaction** Newest Historical Activity 1 Year

Local History: Q-Bands Volume & Close Price % Change | Peak - Volume M1 | Peak - Price % Change M2

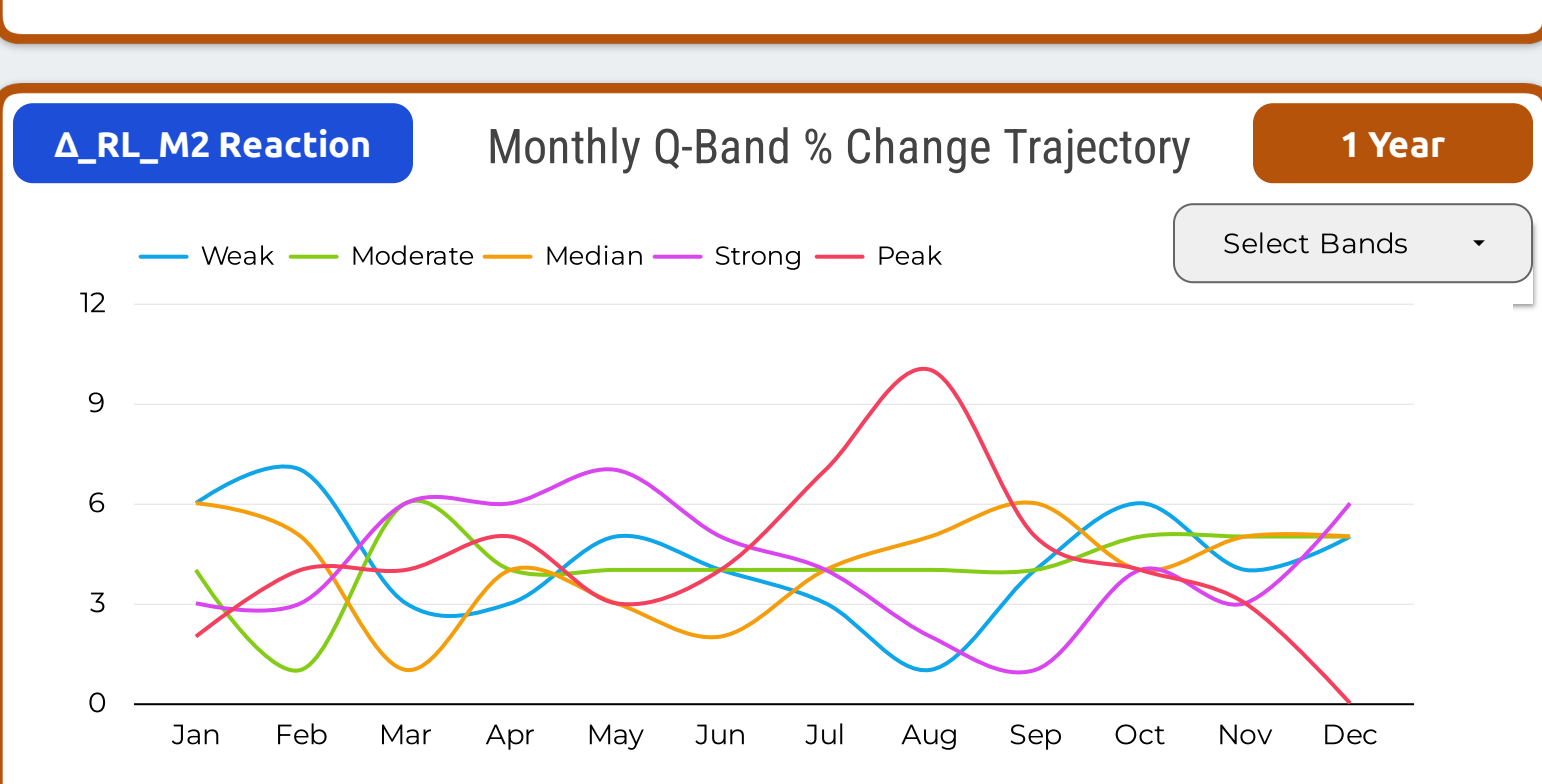
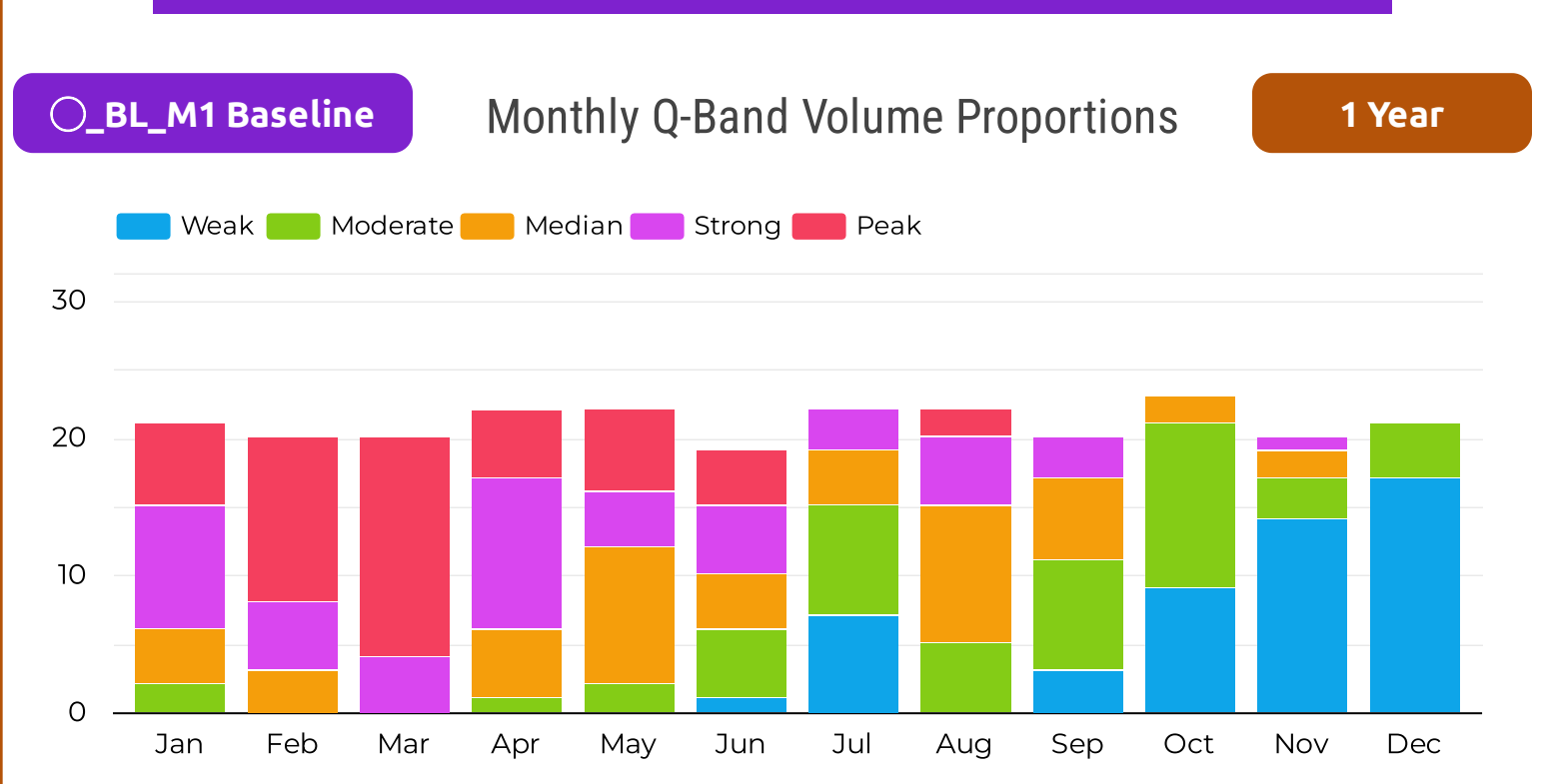
Date	○_BL_M1	Position	△_RL_M2	Peak List	Date_○_BL...	Peak List	Date_△_RL...
Dec 31, 2024	Weak	First Active Date	Median ▼	1	Aug 5, 2024	1	Nov 25, 2024
Dec 30, 2024	Weak	2nd Active Date	Weak ▲	2	Aug 1, 2024	2	Nov 19, 2024
Dec 27, 2024	Weak	3rd	Median ▼	3	Jun 21, 2024	3	Nov 6, 2024
Dec 26, 2024	Weak	4th	Weak ▼	4	Jun 20, 2024	4	Oct 31, 2024
Dec 24, 2024	Weak	5th	Weak ▲	5	Jun 6, 2024	5	Oct 21, 2024
Dec 23, 2024	Weak	6th	Strong ▲	6	Jun 5, 2024	6	Oct 15, 2024
Dec 20, 2024	Moderate	7th	Strong ▲	7	May 31, 2024	7	Oct 8, 2024
Dec 19, 2024	Weak	8th	Moderate ▲	8	May 29, 2024	8	Sep 24, 2024
Dec 18, 2024	Moderate	9th	Moderate ▼	9	May 28, 2024	9	Sep 19, 2024
Dec 17, 2024	Moderate	10th	Moderate ▼	10	May 23, 2024	10	Sep 11, 2024

Monthly / Seasonal Analysis Section - Volume M1 & Close Price % Change M2



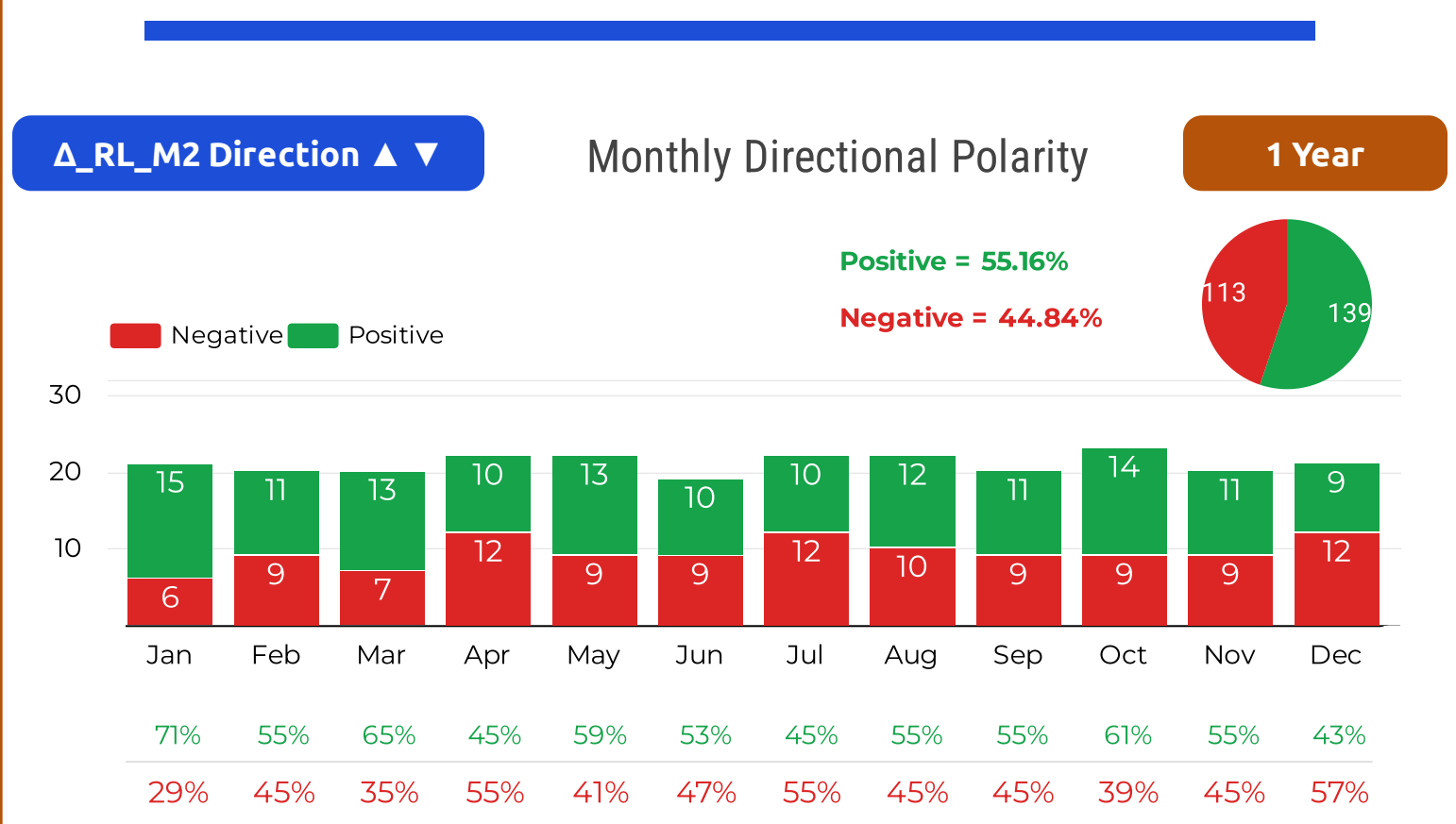
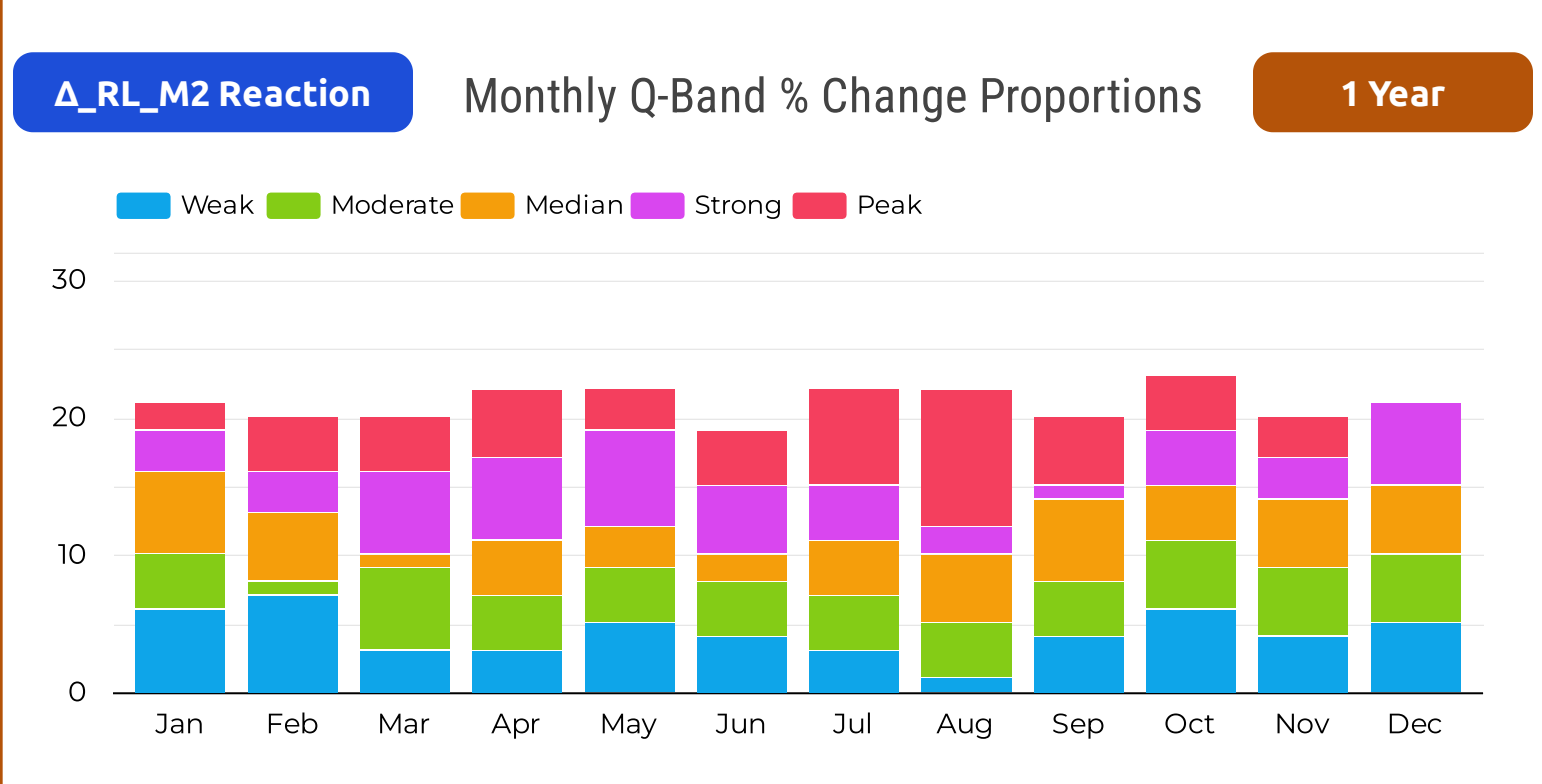
○_BL_M1 Baseline Monthly Q-Band Volume Dispersion 1 Year

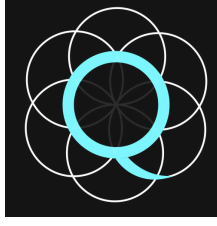
	Jan	Feb	Mar	Apr	May	Jun	Jul	Aug	Sep	Oct	Nov	Dec
Weak	0	0	0	0	0	1	7	0	3	9	14	17
Moderate	2	0	0	1	2	5	8	5	8	12	3	4
Median	4	3	0	5	10	4	4	10	6	2	2	0
Strong	9	5	4	11	4	5	3	5	3	0	1	0
Peak	6	12	16	5	6	4	0	2	0	0	0	0



△_RL_M2 Reaction Monthly Q-Band % Change Dispersion 1 Year

	Jan	Feb	Mar	Apr	May	Jun	Jul	Aug	Sep	Oct	Nov	Dec
Weak	6	7	3	3	5	4	3	1	4	6	4	5
Moderate	4	1	6	4	4	4	4	4	4	5	5	5
Median	6	5	1	4	3	2	4	5	6	4	5	5
Strong	3	3	6	6	7	5	4	2	1	4	3	6
Peak	2	4	4	5	3	4	7	10	5	4	3	0





Quintile Analysis Engine Report

[QAE Guide / Contact](#)

By Simon Hobbs



System Fundamentals

www.system-fundamentals.com

Minimal guide provided below
→ See 'QAE Guide' for more details[Terms & Conditions](#)[Privacy Policy](#)

The **QAE Product** transforms 2 sets of cardinal daily metrics into ordinal **Q-Bands**, ranking and counting them across **Fixed Timeframes** using **Reverse Chronology**. The dataset is a closed 365/366-day historical envelope anchored to **Newest Date**. QAE processes 2 metric sets through 2 independent lenses: **M1 Baseline (BL)** and **M2 Reaction (RL)**. QAE is strictly historical making yesterday the newest allowable date.

Metric 1 - M1 → Baseline Lens **○_BL =** Ranked by absolute state within the Complete One-Year Range

Metric 2 - M2 → Reaction Lens **△_RL =** Reshaped to Reaction Intensity from Prior State then Ranked abs 1yr range

All containers show identification badges for timeframes plus lens type with metric identity

Border colors indicate timeframes

1 Month **3 Months** **6 Months**

1 Year **Distant 6M**

Reserved space: Automated system status and integration details

QAE - Quintile Analysis Engine
SEASONAL BACK-STITC PAGE
* Stock Market Skin *

REPORT TITLE: nVidia / NVDA / 2025 / NY / Metric 1 Volume / Metric 2 Close Price USD / EDT UTC -4hrs

NVIDIA

Newest: Dec 31, 2025
Oldest: Jan 1, 2025
Newest Active Date: Dec 31, 2025

UTC-04:00 Atlantic Canada / Venezuela

QAE Timestamp: 2026-05-12 | 20:47:36

Day Count: 365 | Active Days: 250 | Participation: 68.49%

○_BL_M1 Baseline **1 Year**

Newest Active Dec 31, 2025
Volume
120,100,492

Weak

Consecutive Days (no direction) Weak = 5

Lowest Volume **Highest Volume**
Dec 24, 2025 **Apr 9, 2025**
65,528,551 **818,830,938**

BL Quintile Band M1
Volume Cut-Offs

Weak | Up To - 154,059,241
Moderate | Up To - 181,907,565
Median | Up To - 217,864,109
Strong | Up To - 268,848,825
Peak | Up To - 818,830,938

△_RL_M2 Reaction **1 Year**

Newest Active Dec 31, 2025
Close Price % Change
0.555% = 186.5

Weak ▼

Consecutive Days Weak ▼ = 2 (no direction) Weak = 2

Lowest % Change **Highest % Change**
Jan 8, 2025 **Apr 9, 2025**
0.021% **18.723%**

RL Quintile Band M2
Close Price % Change Cut-Offs

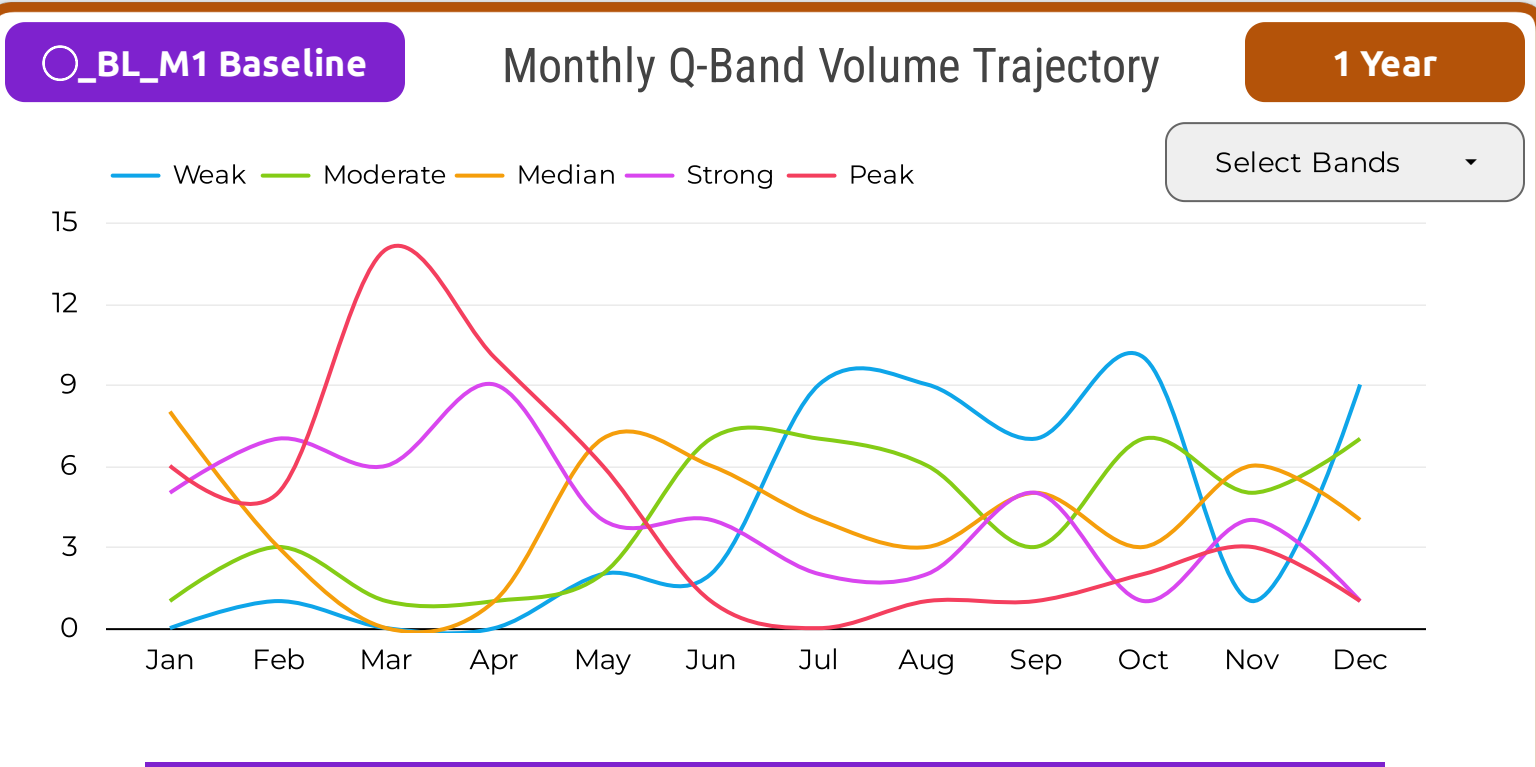
Weak | Up To - 0.5721%
Moderate | Up To - 1.1108%
Median | Up To - 2.0539%
Strong | Up To - 3.3397%
Peak | Up To - 18.7227%

○_BL_M1 Baseline & **△_RL_M2 Reaction** **Newest Historical Activity** **1 Year**

Local History: Q-Bands Volume & Close Price % Change | Peak - Volume M1 | Peak - Price % Change M2

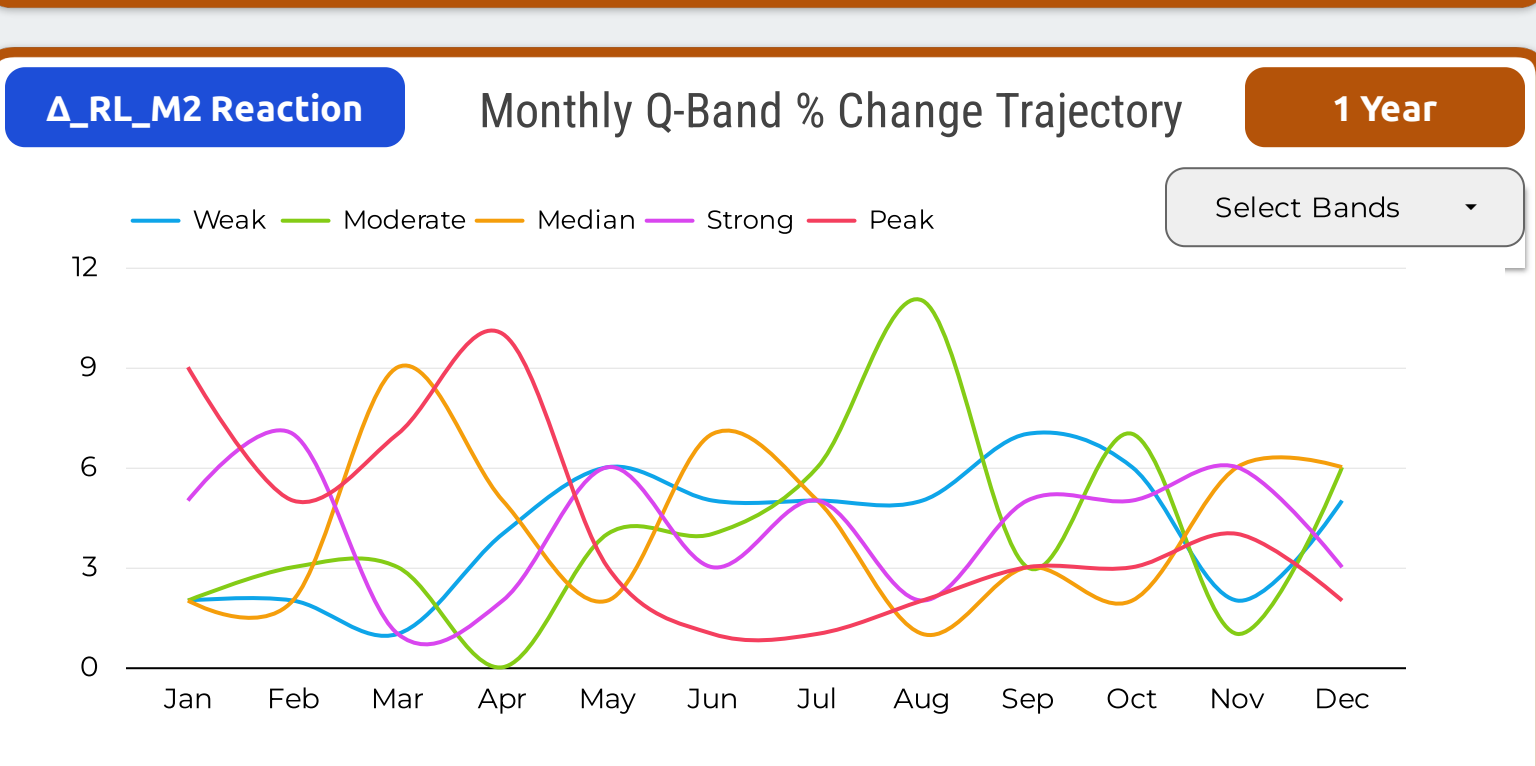
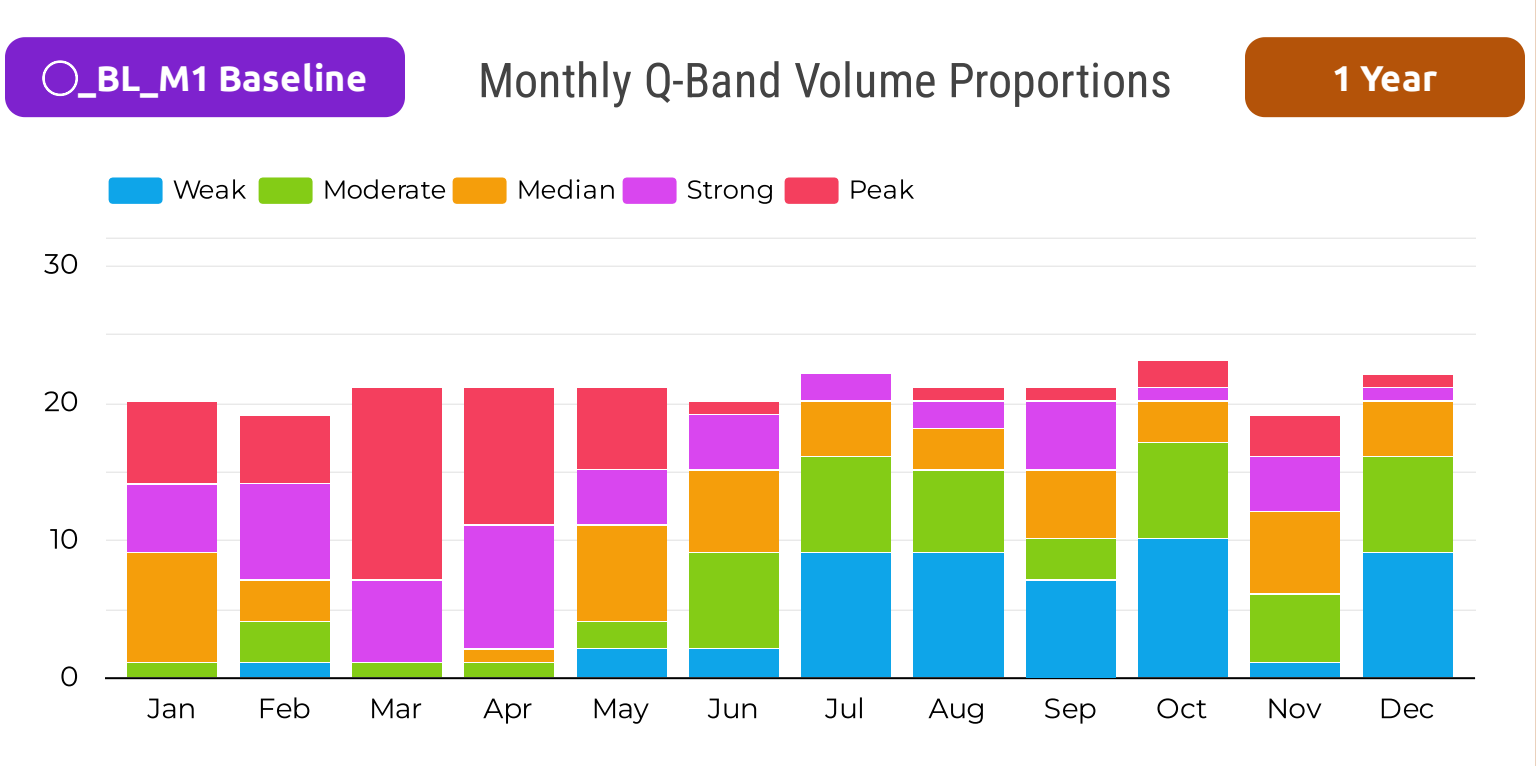
Date	○_BL_M1	Position	△_RL_M2	Peak List	Date_○_BL...	Peak List	Date_△_RL...
Dec 31, 2025	Weak	First Active Date	Weak ▼	1	Dec 19, 2025	1	Dec 19, 2025
Dec 30, 2025	Weak	2nd Active Date	Weak ▼	2	Nov 25, 2025	2	Dec 17, 2025
Dec 29, 2025	Weak	3rd	Median ▼	3	Nov 21, 2025	3	Nov 13, 2025
Dec 26, 2025	Weak	4th	Moderate ▲	4	Nov 20, 2025	4	Nov 10, 2025
Dec 24, 2025	Weak	5th	Weak ▼	5	Oct 29, 2025	5	Nov 6, 2025
Dec 23, 2025	Moderate	6th	Strong ▲	6	Oct 28, 2025	6	Nov 4, 2025
Dec 22, 2025	Weak	7th	Median ▲	7	Sep 22, 2025	7	Oct 28, 2025
Dec 19, 2025	Peak	8th	Peak ▲	8	Aug 28, 2025	8	Oct 14, 2025
Dec 18, 2025	Moderate	9th	Median ▲	9	Jun 25, 2025	9	Oct 10, 2025
Dec 17, 2025	Strong	10th	Peak ▼	10	May 30, 2025	10	Sep 22, 2025

Monthly / Seasonal Analysis Section - Volume M1 & Close Price % Change M2



○_BL_M1 Baseline **Monthly Q-Band Volume Dispersion** **1 Year**

	Jan	Feb	Mar	Apr	May	Jun	Jul	Aug	Sep	Oct	Nov	Dec
Weak	0	1	0	0	2	2	9	9	7	10	1	9
Moderate	1	3	1	1	2	7	7	6	3	7	5	7
Median	8	3	0	1	7	6	4	3	5	3	6	4
Strong	5	7	6	9	4	4	2	2	5	1	4	1
Peak	6	5	14	10	6	1	0	1	1	2	3	1



△_RL_M2 Reaction **Monthly Q-Band % Change Dispersion** **1 Year**

	Jan	Feb	Mar	Apr	May	Jun	Jul	Aug	Sep	Oct	Nov	Dec
Weak	2	2	1	4	6	5	5	5	7	6	2	5
Moderate	2	3	3	0	4	4	6	11	3	7	1	6
Median	2	2	9	5	2	7	5	1	3	2	6	6
Strong	5	7	1	2	6	3	5	2	5	5	6	3
Peak	9	5	7	10	3	1	1	2	3	3	4	2

